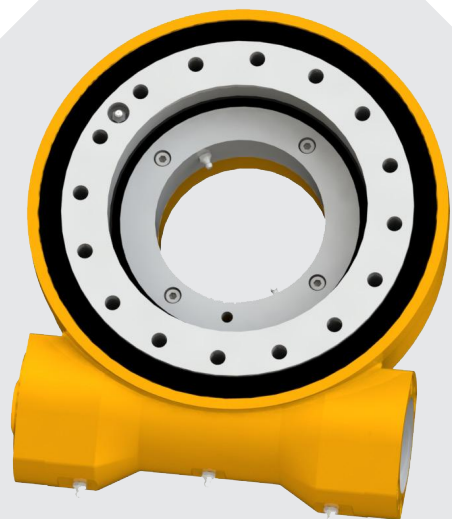


ПОВОРОТНЫЙ ПРИВОД



ООО "Гиртаб"

Россия, Свердловская область, г. Екатеринбург.

www.girtab96.ru

e-mail: info@girtab96.ru

+7 (343) 328-49-16

CONTENTS

目·录

CODE DESCRIPTION 01

编码说明

PROJECT CASE 02

工程案例

FWA SERISE 03-14

FWA 系列

FWA7	03
FWA9	04
FWA12	05
FWA14	06
FWA14-2	07
FWA17	08
FWA17-2	09
FWA19	10
FWA21	11
FWA21-2	12
FWA25	13
FWA25-2	14
FWA28	15

FWE SERISE 16-23

FWE 系列

FWE9	16
FWE12	17
FWE14	18
FWE17	19
FWE21	20
FWE25	21
FWE37	22
FWE44	23

CONTENTS

目·录

FG SERISE --- 24-40

FG 系列

FGA5	24
FGA5C	25
FGA7	26
FGA28	27
FGE3C	28
FGE5	29
FGE7	30
FGE9	31
FGE12	32
FGE14	33
FGE17	34
FGE21	35
FGE25	36
FGO9	37
FGO12	38
FGO14	39
FGO17	40

FH SERISE --- 41-48

FH 系列

FHB7	41
FHB9	42
FHB12	43
FHB14	44
FHB17	45
FHB19	46
FHB21	47
FHB25A	48

FR SERISE --- 49-51

FR 系列

FR72	49
FR110	50
FR114	51

SLEWING DRIVE SERISE --- 52-57

回转支承系列

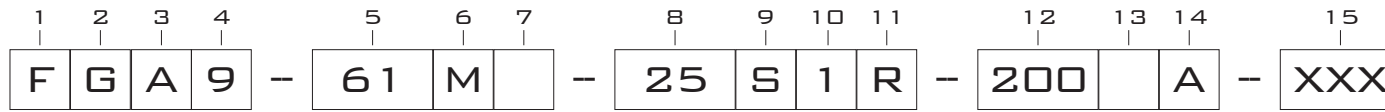
SLEW BEARING LOAD CALCULATION AND MODEL SELECTION	52
回转支承选型计算	

SLEW BEARING MODELS AND DIMENSIONS	53
回转支承型号尺寸	

SINGLE BALL BEARING	54
单排球式回转支承	

PARAMETERS	55-57
基本参数表	

CODE DESCRIPTION



XXX: CUSTOMER CODE WITH SPECIAL REQUIREMENTS 表示客户代码, 如果有表示该款专用

A: PORT TOWARDS AWAY OF WORM SHAFT BODY 油口在外侧
I: PORT TOWARDS INSIDE OF WORM SHAFT BODY 油口在内侧
U: PORTS TOWARDS TO SLEWING BEARING MOUNTING SURFACE 油口在上方
D: PORTS TOWARDS TO BOTTOM MOUNTING SURFACE 油口在下方

NO LETTER: STANDARD MOTOR PORT, NO CBV 无平衡阀及其安装孔
P1: _____ MOTOR WITH CBV MOUNT HOLE, NO CBV 无平衡阀但保留其安装孔
P2: _____ MOTOR WITH CBV 带平衡阀
200: _____ 200 CC MOTOR(CC/REC) 排量 (CC/REC)

R: RIGHT HAND INSTALLATION 表示蜗杆输入端在右侧
L: LEFT HAND INSTALLATION 表示蜗杆输入端在左侧

1: _____ NA: 1 WORM SHAFT 表示为 1 支蜗杆传动
2: _____ 2 WORM SHAFTS 表示为 2 支蜗杆传动

S: _____ WITH END CAP, NO HEX HEAD AND ENCODER INTERFACE 表示为蜗杆另一端为标准不带六角头
H: _____ WITH HEX HEAD 表示为带有六角
E: _____ WITH ENCODER INTERFACE 表示带有编码器连接孔
P: _____ EXTENDED WORM SHAFT 表示蜗杆另一端加长

25: _____ INPUT 25 MM KEYED HOLE 表示蜗杆输入孔直径及单键
B: _____ INPUT 6B SPLINE 表示为内孔直径为 21.8 的 6B 矩形花键
W: _____ WITH KEY SHAFT INPUT 表示输入端为外圆

T: _____ INNER RING WITH THRU HOLE AND OUTER RING WITH BLIND THREAD HOLE 表示内圈为光孔, 外圈盲孔
C: _____ THRU THREAD HOLE FOR INNERING AND OUTERING 表示内外圈螺纹为通
NO LETTER: OUTER RING AND INNERING WITH BLIND HOLE 无: 表示螺孔为盲孔
D: _____ INNERING WITH THRU THREAD HOLE, OUTER RING WITH BLIND THREAD HOLE 表示内圈为螺纹通孔, 外圈为螺纹盲孔

M: _____ METRIC THREAD HOLE 公制
B: _____ BRITISH THREAD HOLE 英制
61: _____ RATIO: 61 表示减速比为 61

09: 9 INCH SLEWING DRIVE 表示滚道直径约为 9 英寸的装置

A: _____ WITH SHAFT SEAL BETWEEN HOUSING AND OUTER RING 外圈有骨架油封
B: _____ WITH TWO SHAFT SEALS, ONE BETWEEN HOUSING AND OUTER RING; THE OTHER ONE BETWEEN INNER RING AND OUTER RING 内外骨架油封
O: _____ OPEN HOUSING 敞开式
E: _____ FLAT SEAL BETWEEN HOUSING AND OUTER RING 外展式密封皮

G: _____ HELICAL GEAR 齿轮类
W: _____ WORM GEAR 钢蜗轮类
D: _____ DUAL AXIS DRIVE 组合式
P: _____ HIGH PRECISION 齿轮精密型
H: _____ HEAVY LOAD WITH BRONZE GEAR TEETH 铜蜗轮重载型
F: _____ YOJU PRODUCT STARTS WITH F 友聚英文头字母

Применяемость



AERIAL LIFTS



SATELLITE
ANTENNA



VACUUM TRUCK



TRUCK MOUNTED CRANE



ATTACHMENT
S



TRUCK MIXERS

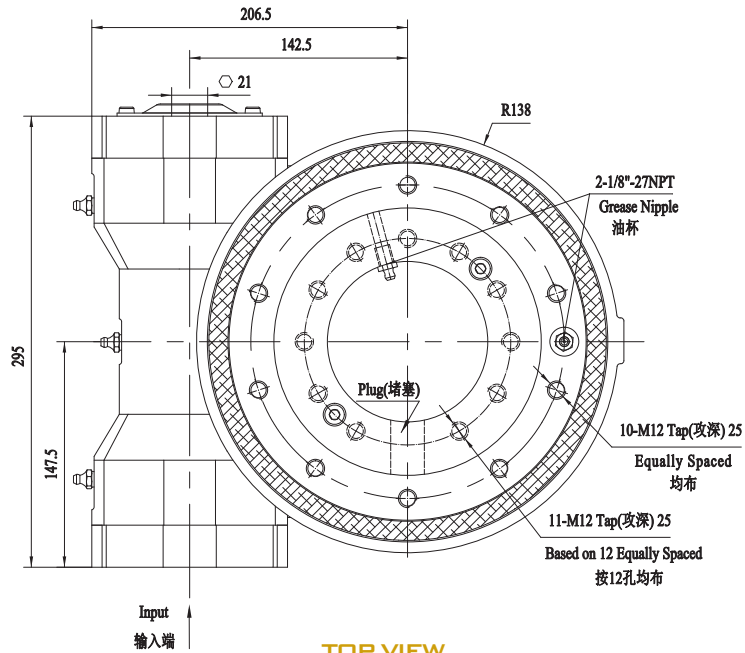


MODULAR VEHICAL

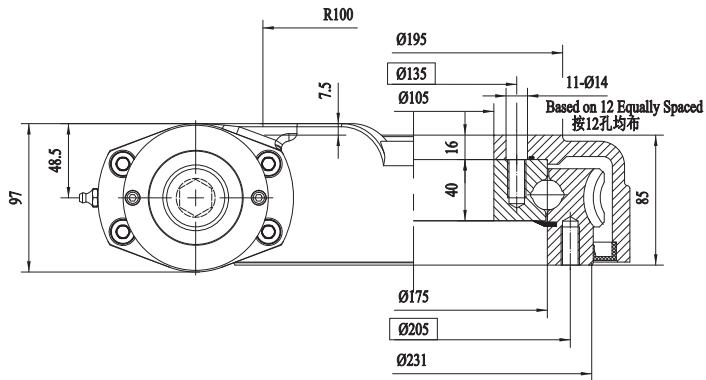


MINING JUMBOS

FRONT VIEW
正视图



TOP VIEW
俯视图



NOTICE: CUSTOMIZED ACCORDING TO REQUESTS
注意: 可根据客户要求进行定制化设计

SLEWING DRIVE PERFORMANCE PARAMETERES

性能参数表

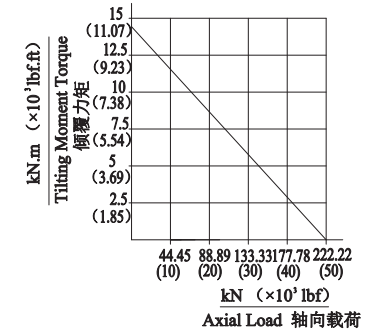
OUTPUT TORQUE	TILTING MOMENT TORQUE	HOLDING TORQUE	AXIAL LOAD	RADIAL LOAD	RATIO	BACKLASH	WEIGHT
输出转矩	倾覆力矩	保持力矩	轴向承载力	径向承载力	速比	精度	重量
3.5 KN.M	14.7 KN.M	20.6 KN.M	227 KN	92.7 KN	47:1	≤0.15°	35Kg
2583 LBF.FT	10.8*10 ³ LBF.FT	15.2*10 ³ LBF.FT	51*10 ³ LBF	20.8*10 ³ LBF			

3D

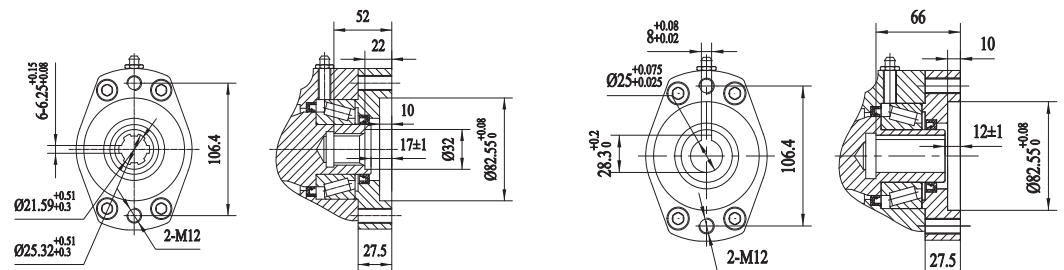


MOMENT LOAD CHART

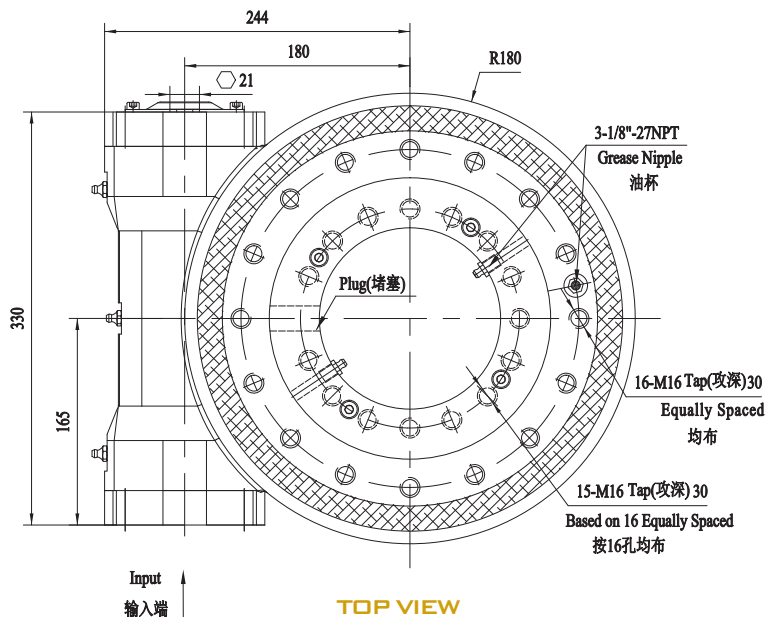
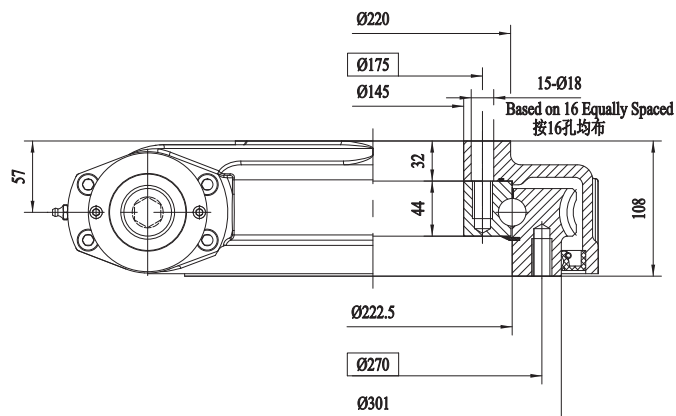
承载力矩图



INPUT



6B Spline 花键

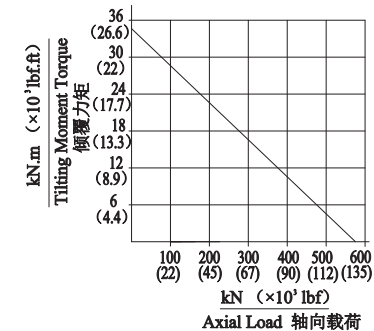
FRONT VIEW
 正视图

TOP VIEW
 俯视图


NOTICE: CUSTOMIZED ACCORDING TO REQUESTS
 注意: 可根据客户要求进行定制化设计

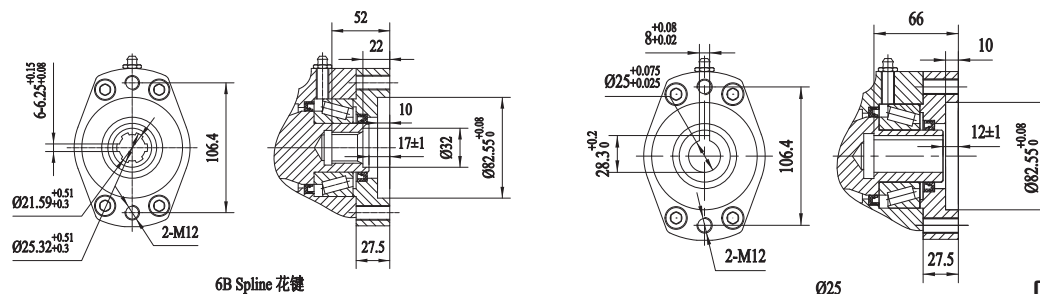
SLEWING DRIVE PERFORMANCE PARAMETERS
 性能参数表

OUTPUT TORQUE	TILTING MOMENT TORQUE	HOLDING TORQUE	AXIAL LOAD	RADIAL LOAD	RATIO	BACKLASH	WEIGHT
输出转矩	倾覆力矩	保持力矩	轴向承载力	径向承载力	速比	精度	重量
8 KN.M	35.6 KN.M	39.8 KN.M	580 KN	220 KN	62:1	≤0.15°	52Kg
5904 LBF.FT	26.3*10 ³ LBF.FT	29.37*10 ³ LBF.FT	130.3*10 ³ LBF	49.4*10 ³ LBF			

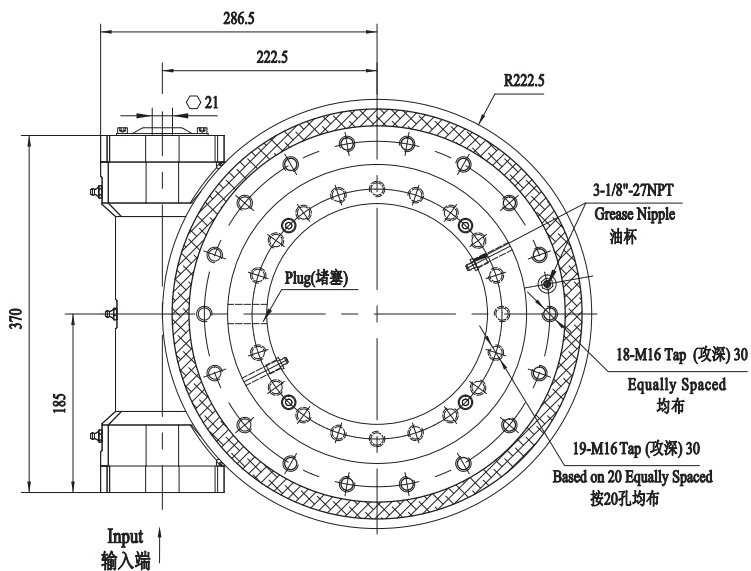
3D


MOMENT LOAD CHART
 承载力矩图


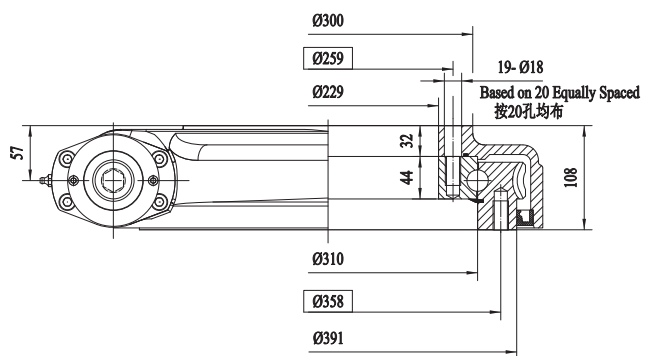
INPUT



FRONT VIEW
正视图



TOP VIEW
俯视图



NOTICE: CUSTOMIZED ACCORDING TO REQUESTS
注意: 可根据客户要求进行定制化设计

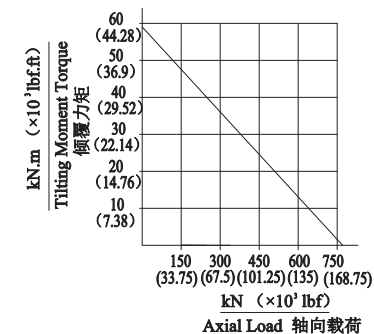
SLEWING DRIVE PERFORMANCE PARAMERERS
性能参数表

OUTPUT TORQUE	TILTING MOMENT TORQUE	HOLDING TORQUE	AXIAL LOAD	RADIAL LOAD	RATIO	BACKLASH	WEIGHT
输出转矩	倾覆力矩	保持力矩	轴向承载力	径向承载力	速比	精度	重量
9.5 KN.M	57 KN.M	44.3 KN.M	760 KN	280 KN	79:1	≤0.15°	67Kg
7011 LBF.FT	42.1*10 ³ LBF.FT	32.7*10 ³ LBF.FT	171.1*10 ³ LBF	62.9*10 ³ LBF			

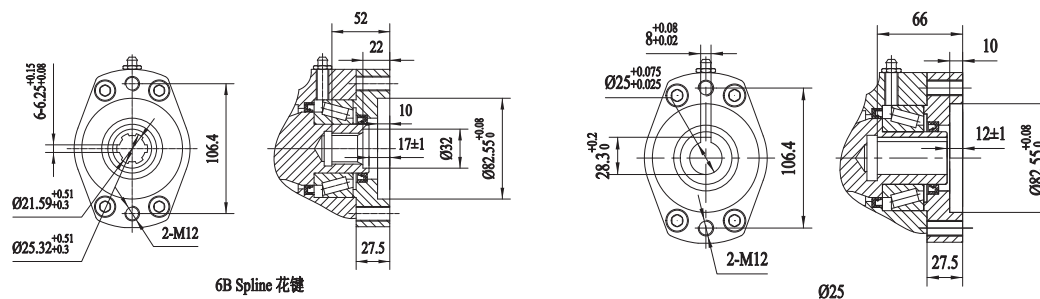
3D

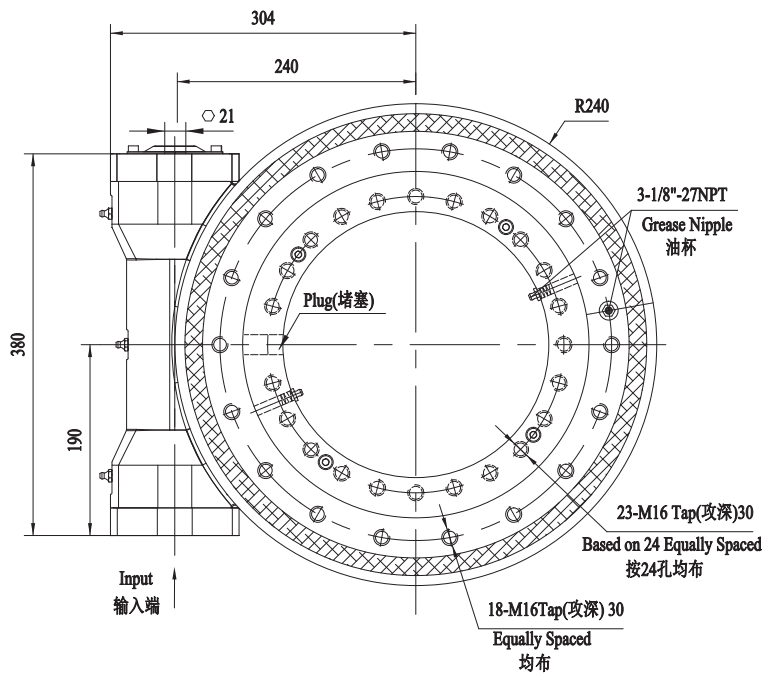
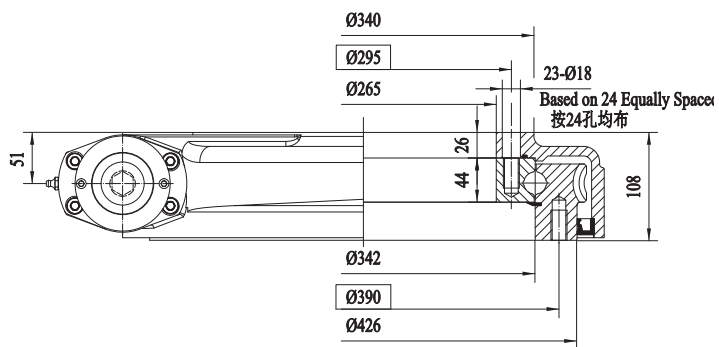


MOMENT LOAD CHART
承载力矩图



INPUT



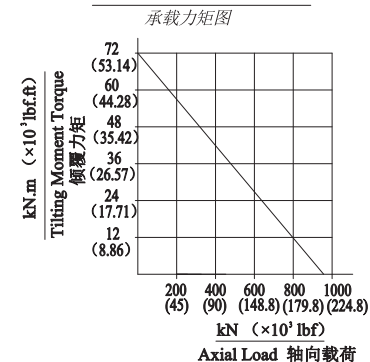
FRONT VIEW
正视图

TOP VIEW
俯视图


NOTICE: CUSTOMIZED ACCORDING TO REQUESTS
 注意: 可根据客户要求进行定制化设计

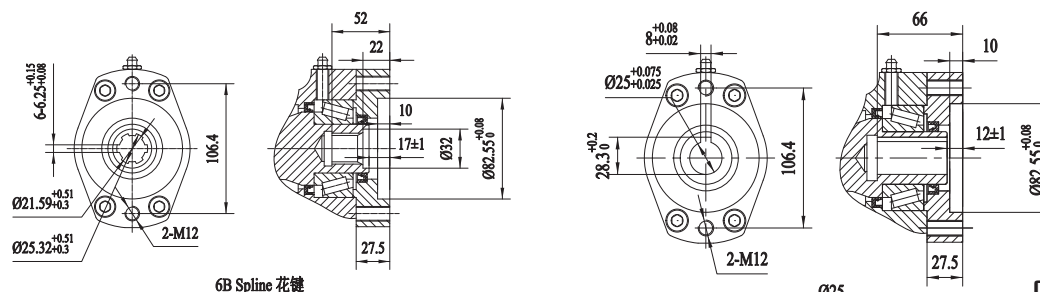
SLEWING DRIVE PERFORMANCE PARAMETERS
性能参数表

OUTPUT TORQUE	TILTING MOMENT TORQUE	HOLDING TORQUE	AXIAL LOAD	RADIAL LOAD	RATIO	BACKLASH	WEIGHT
输出转矩	倾覆力矩	保持力矩	轴向承载力	径向承载力	速比	精度	重量
10.8 KN.M	71.2 KN.M	49.5 KN.M	960 KN	360 KN	86:1	≤0.13°	75Kg
7970 LBF.FT	52.5*10 ³ LBF.FT	36.5*10 ³ LBF.FT	215.8*10 ³ LBF	80.9*10 ³ LBF			

3D

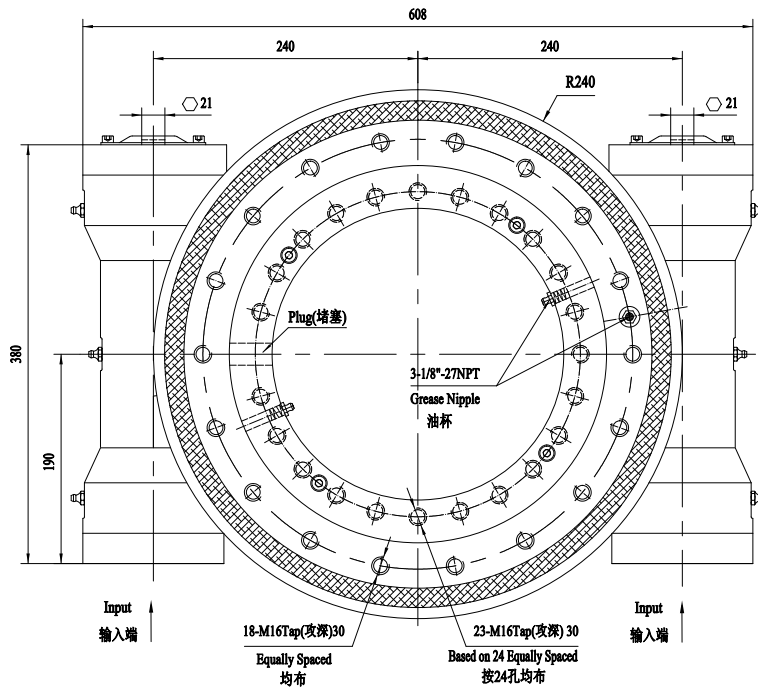

MOMENT LOAD CHART


INPUT

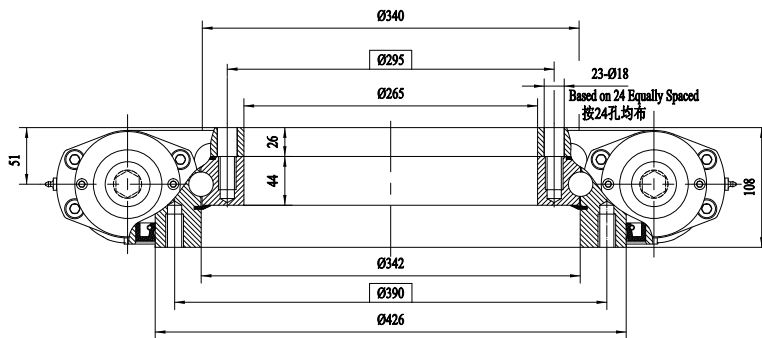


6B Spline 花键

FRONT VIEW
正视图



TOP VIEW
俯视图



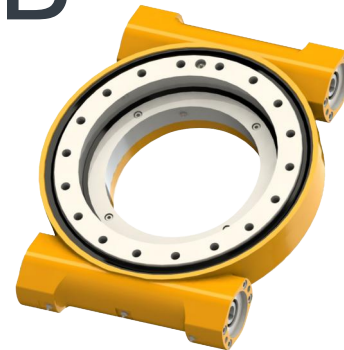
NOTICE: CUSTOMIZED ACCORDING TO REQUESTS
注意: 可根据客户要求进行定制化设计

SLEWING DRIVE PERFORMANCE PARAMETERS

性能参数表

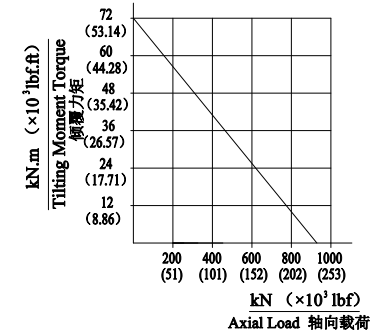
OUTPUT TORQUE	TILTING MOMENT TORQUE	HOLDING TORQUE	AXIAL LOAD	RADIAL LOAD	RATIO	BACKLASH	WEIGHT
输出转矩	倾覆力矩	保持力矩	轴向承载力	径向承载力	速比	精度	重量
16.2 KN.M	71.2 KN.M	74 KN.M	960 KN	360 KN	86:1	≤0.17°	90KG
11956 LBF.FT	52.5*10 ³ LBF.FT	36.5*10 ³ LBF.FT	215.8*10 ³ LBF	80.9*10 ³ LBF			

3D

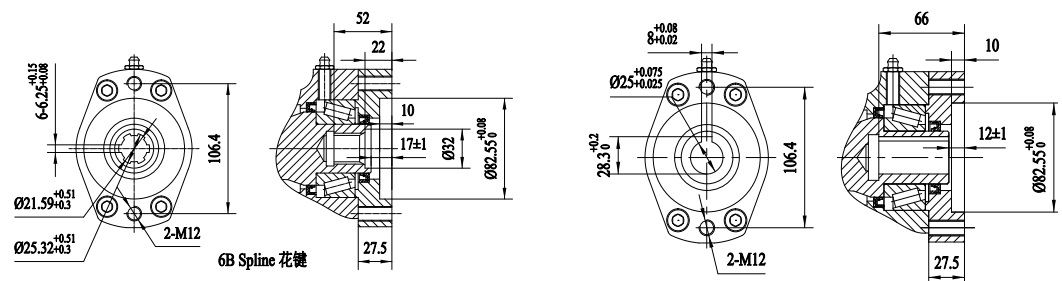


MOMENT LOAD CHART

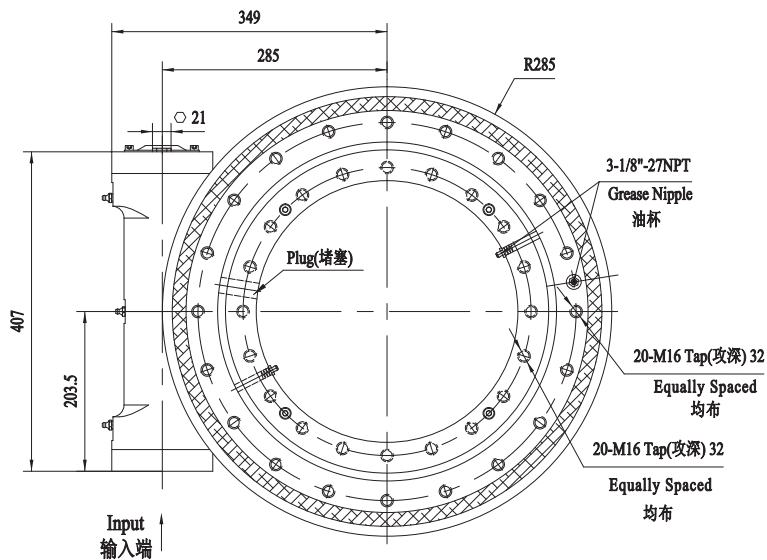
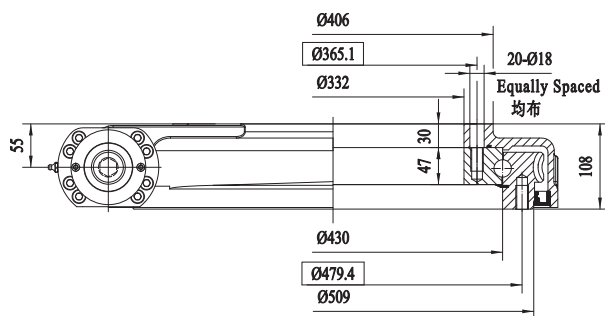
承载力矩图



INPUT



Ø25

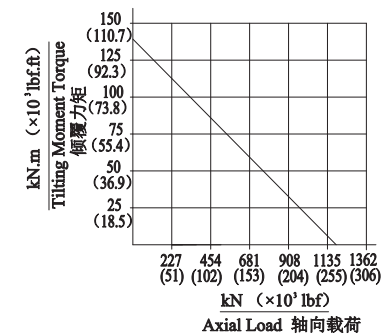
FRONT VIEW
 正视图

TOP VIEW
 俯视图


NOTICE: CUSTOMIZED ACCORDING TO REQUESTS
 注意: 可根据客户要求进行定制化设计

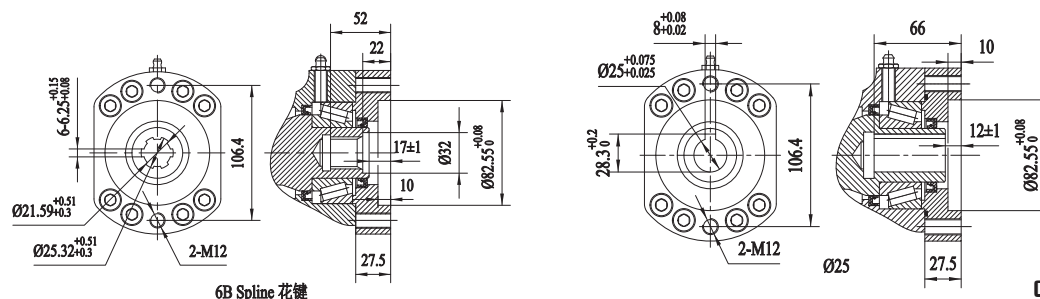
SLEWING DRIVE PERFORMANCE PARAMERERS
 性能参数表

OUTPUT TORQUE	TILTING MOMENT TORQUE	HOLDING TORQUE	AXIAL LOAD	RADIAL LOAD	RATIO	BACKLASH	WEIGHT
输出转矩	倾覆力矩	保持力矩	轴向承载力	径向承载力	速比	精度	重量
12.96 KN.M	142.4 KN.M	74 KN.M	1166 KN	435 KN	104:1	≤0.1°	97Kg
9564 LBF.FT	105*10 ³ LBF.FT	54.6*10 ³ LBF.FT	262*10 ³ LBF	97.8*10 ³ LBF			

3D

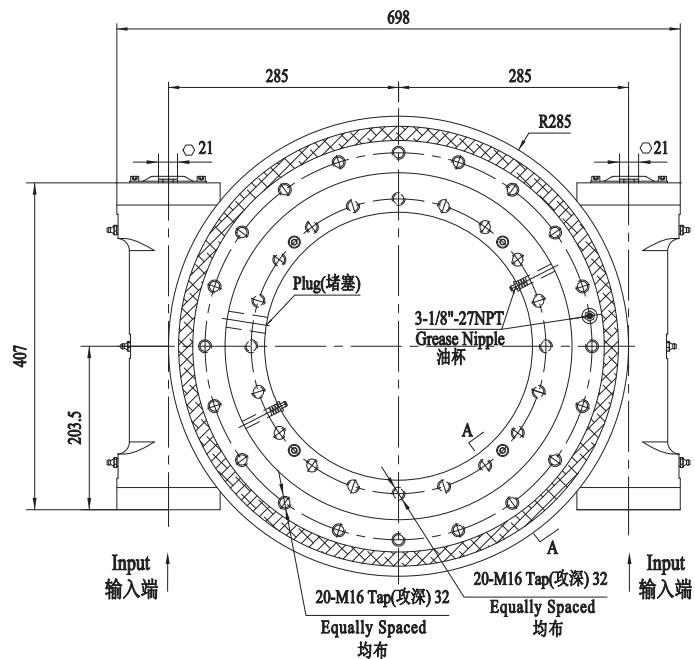

MOMENT LOAD CHART
 承载力矩图


INPUT

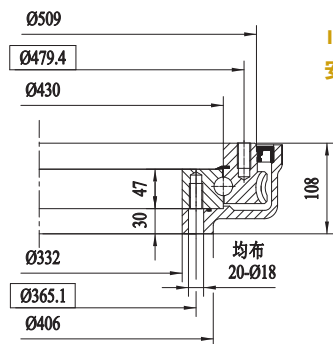


6B Spline 花键

FRONT VIEW 正视图



TOP VIEW 俯视图



INSTALLATION SIZE
安装尺寸

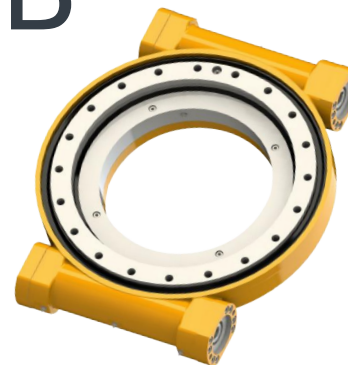
NOTICE: 注意:
CUSTOMIZED ACCORDING
TO REQUESTS
可根据客户要求
进行定制化设计

SLEWING DRIVE PERFORMANCE PARAMETERS

性能参数表

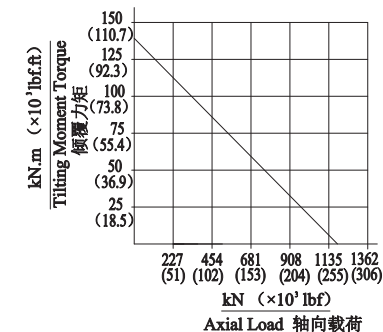
OUTPUT TORQUE	TILTING MOMENT TORQUE	HOLDING TORQUE	AXIAL LOAD	RADIAL LOAD	RATIO	BACKLASH	WEIGHT
输出转矩	倾覆力矩	保持力矩	轴向承载力	径向承载力	速比	精度	重量
19.44 KN.M	142.4 KN.M	110 KN.M	1166 KN	435 KN	104:1	$\leq 0.15^\circ$	115Kg
14347 LBF.FT	105*10 ³ LBF.FT	81.2*10 ³ LBF.FT	262*10 ³ LBF	97.8*10 ³ LBF			

3D

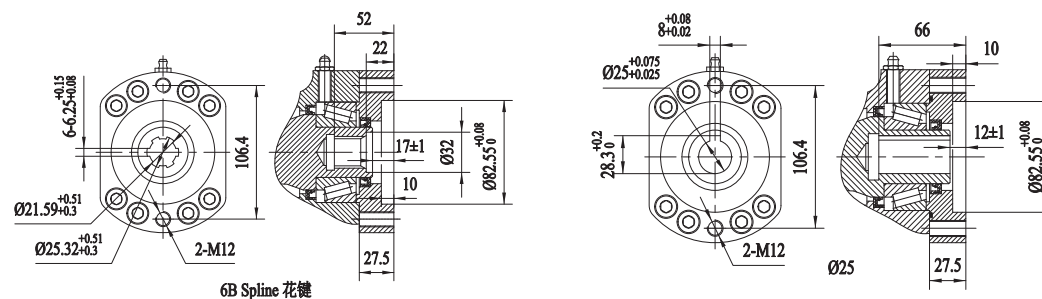


MOMENT LOAD CHART

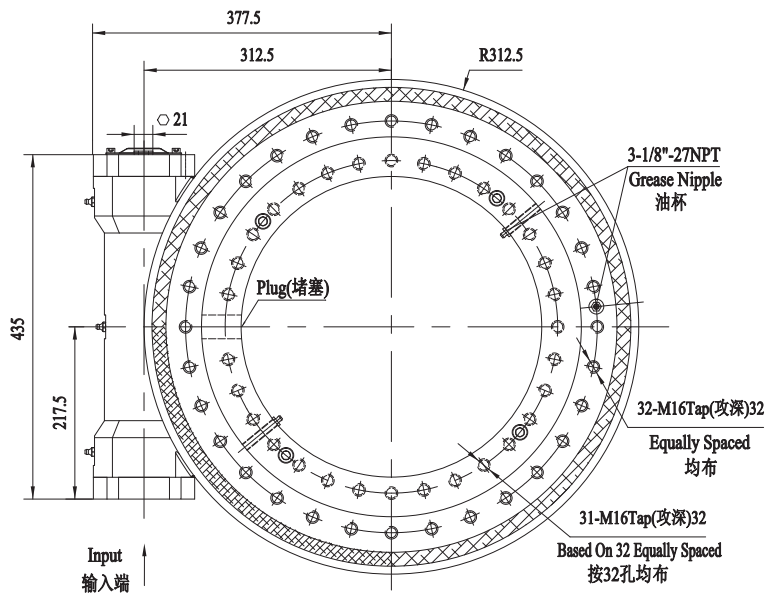
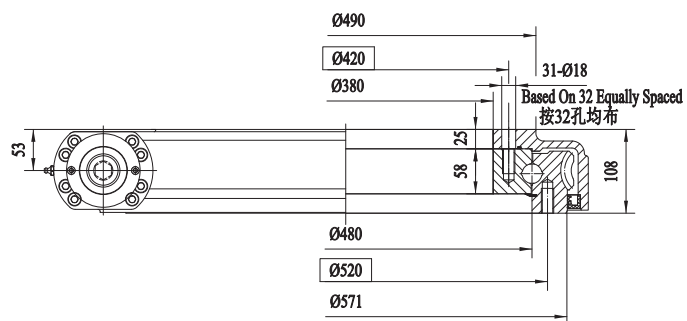
承载力矩图



INPUT



6B Spline 花键

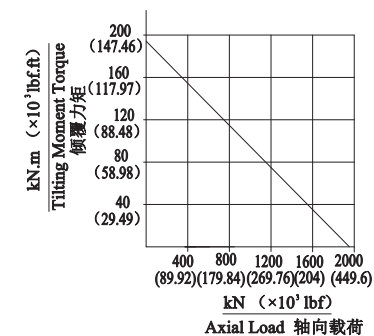
FRONT VIEW
 正视图

TOP VIEW
 俯视图


NOTICE: CUSTOMIZED ACCORDING TO REQUESTS
 注意: 可根据客户要求进行定制化设计

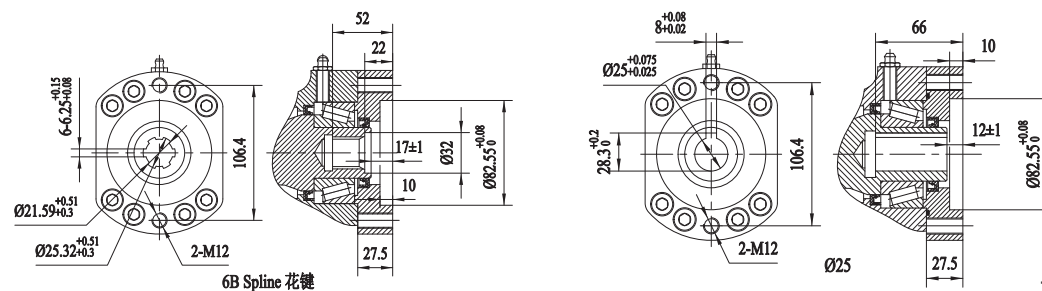
SLEWING DRIVE PERFORMANCE PARAMETERS
 性能参数表

OUTPUT TORQUE	TILTING MOMENT TORQUE	HOLDING TORQUE	AXIAL LOAD	RADIAL LOAD	RATIO	BACKLASH	WEIGHT
输出转矩	倾覆力矩	保持力矩	轴向承载力	径向承载力	速比	精度	重量
18.5 KN.M	196 KN.M	82 KN.M	1810 KN	675 KN	94:1	≤0.1°	120Kg
13640 LBF.FT	144.5*10 ³ LBF.FT	60.5*10 ³ LBF.FT	406*10 ³ LBF	151.7*10 ³ LBF			

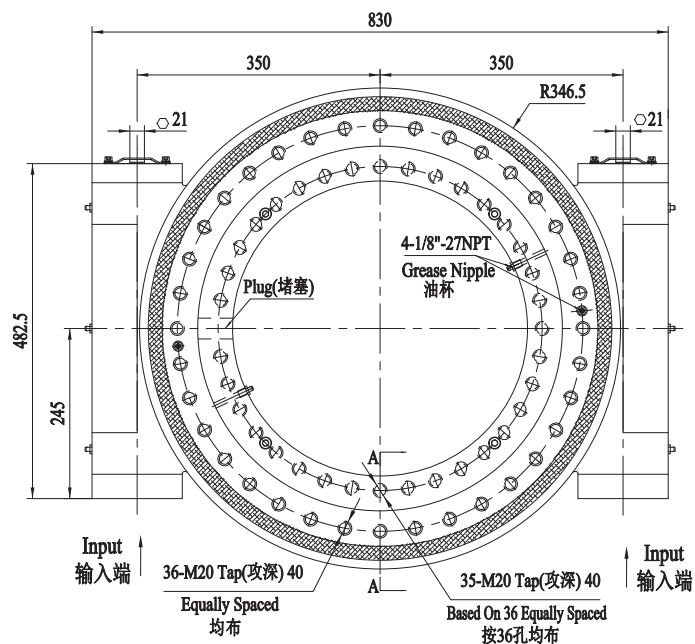
3D


MOMENT LOAD CHART
 承载力矩图


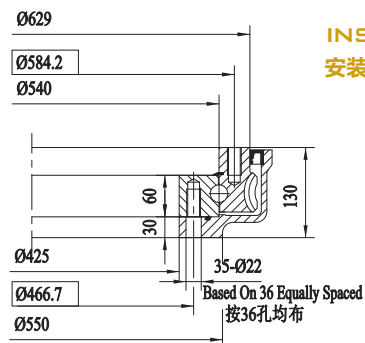
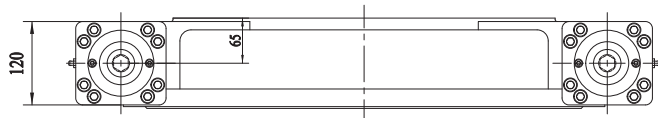
INPUT



FRONT VIEW 正视图



TOP VIEW 俯视图



INSTALLATION SIZE 安装尺寸

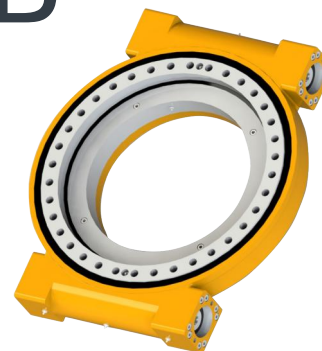
NOTICE: 注意:
 CUSTOMIZED ACCORDING
 TO REQUESTS
 可根据客户要求
 进行定制化设计

SLEWING DRIVE PERFORMANCE PARAMETERES

性能参数表

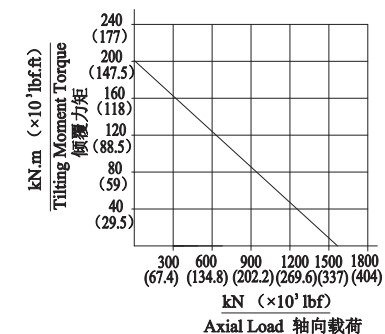
OUTPUT TORQUE	TILTING MOMENT TORQUE	HOLDING TORQUE	AXIAL LOAD	RADIAL LOAD	RATIO	BACKLASH	WEIGHT
输出转矩	倾覆力矩	保持力矩	轴向承载力	径向承载力	速比	精度	重量
48 KN.M	203 KN.M	181 KN.M	1600 KN	650 KN	90:1	≤0.13°	200Kg
35400 LBF.FT	150*10 ³ LBF.FT	141*10 ³ LBF.FT	359.7*10 ³ LBF	146*10 ³ LBF			

3D

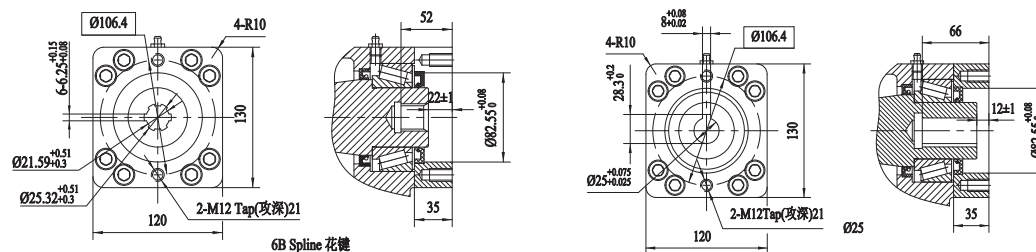


MOMENT LOAD CHART

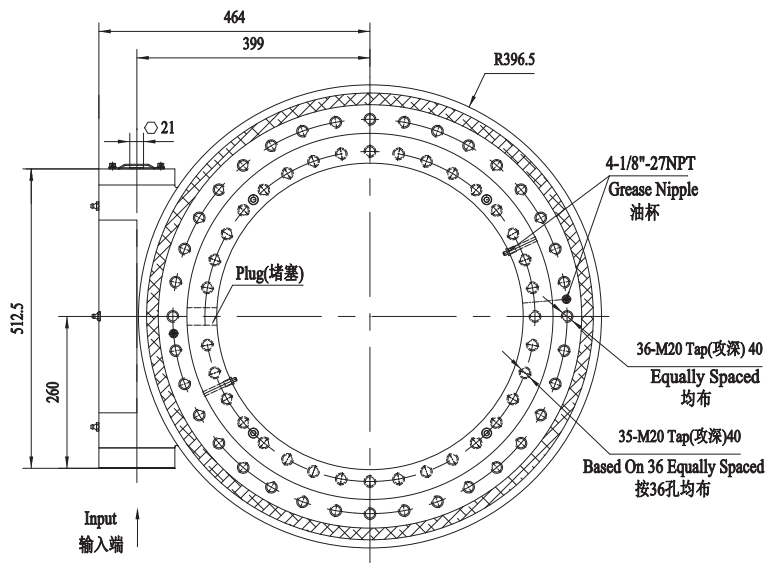
承载力矩图



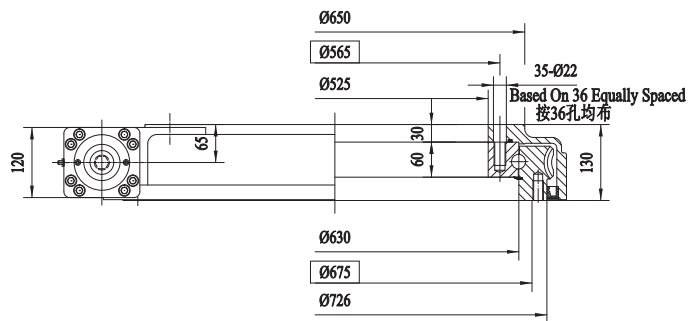
INPUT



FRONT VIEW
正视图



TOP VIEW
俯视图



NOTICE: CUSTOMIZED ACCORDING TO REQUESTS
注意: 可根据客户要求进行定制化设计

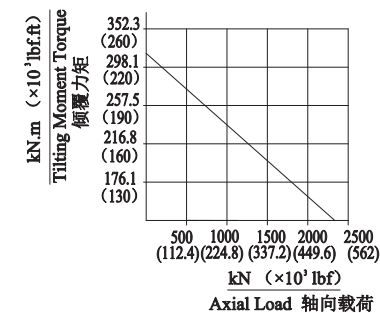
SLEWING DRIVE PERFORMANCE PARAMETERS
性能参数表

OUTPUT TORQUE	TILTING MOMENT TORQUE	HOLDING TORQUE	AXIAL LOAD	RADIAL LOAD	RATIO	BACKLASH	WEIGHT
输出转矩	倾覆力矩	保持力矩	轴向承载力	径向承载力	速比	精度	重量
34.2 KN.M	310 KN.M	160 KN.M	2400 KN	950 KN	104:1	≤0.1°	200Kg
25240 LBF.FT	229*10 ³ LBF.FT	118*10 ³ LBF.FT	539.5*10 ³ LBF	213.6*10 ³ LBF			

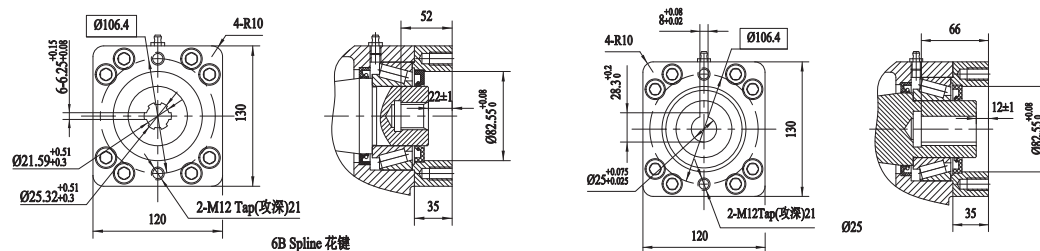
3D



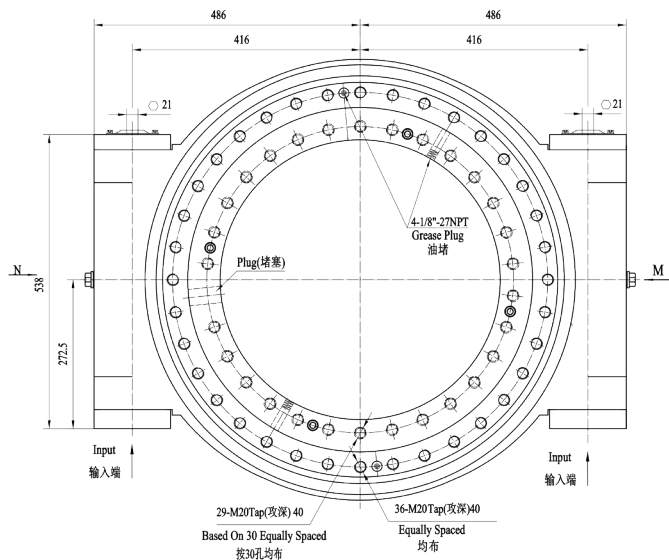
MOMENT LOAD CHART
承载力矩图



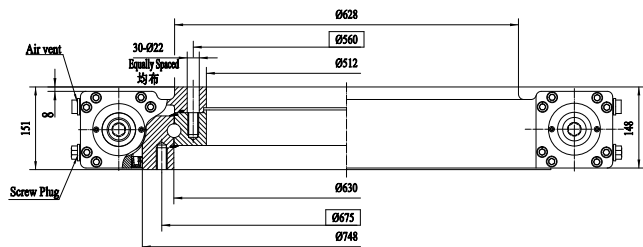
INPUT



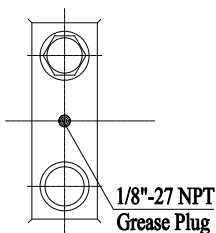
FRONT VIEW 正视图



TOP VIEW 俯视图



M, N VIEW



NOTICE: 注意:
CUSTOMIZED ACCORDING
TO REQUESTS
可根据客户要求
进行定制化设计

SLEWING DRIVE PERFORMANCE PARAMETERERS

性能参数表

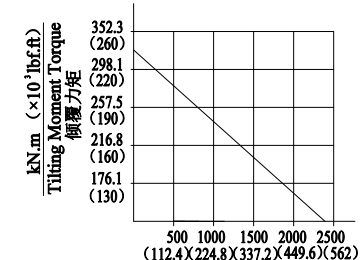
OUTPUT TORQUE	TILTING MOMENT TORQUE	HOLDING TORQUE	AXIAL LOAD	RADIAL LOAD	RATIO	BACKLASH	WEIGHT
输出转矩	倾覆力矩	保持力矩	轴向承载力	径向承载力	速比	精度	重量
58 KN.M	310 KN.M	275 KN.M	2400 KN	950 KN	108:1	≤0.13°	270Kg
42.8*10 ³ LBF.FT	229*10 ³ LBF.FT	203*10 ³ LBF.FT	539.5*10 ³ LBF	213.6*10 ³ LBF			

3D



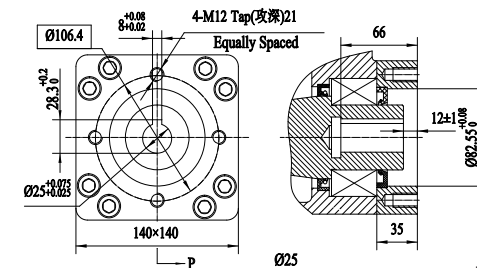
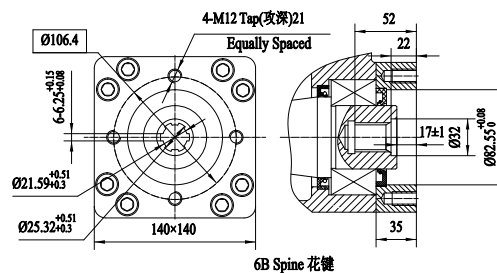
MOMENT LOAD CHART

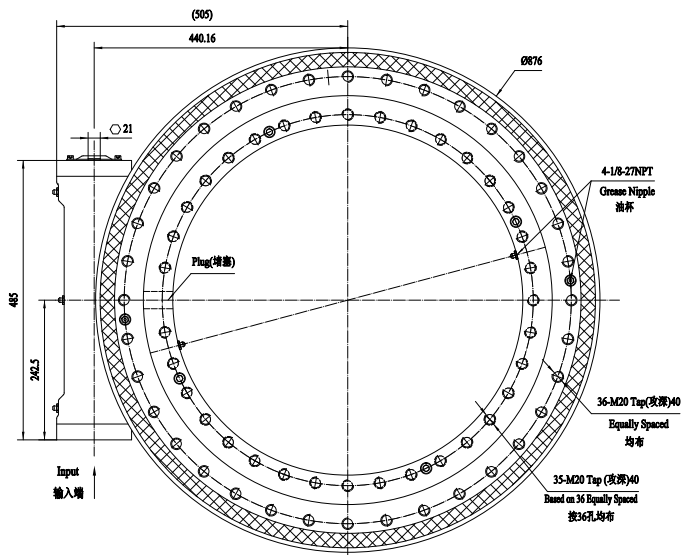
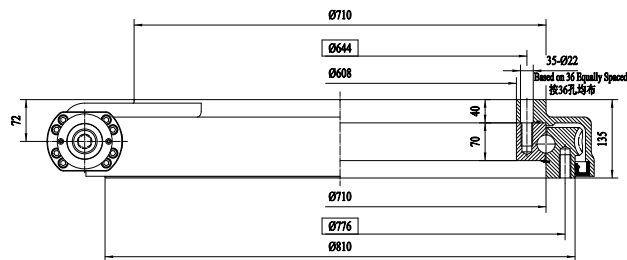
承载力矩图



kN (x10³ lbf)
Axial Load 轴向载荷

INPUT



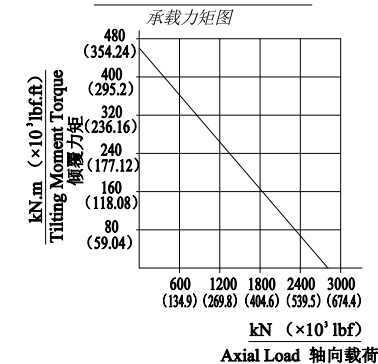
FRONT VIEW
正视图

TOP VIEW
俯视图


NOTICE: CUSTOMIZED ACCORDING TO REQUESTS
 注意: 可根据客户要求进行定制化设计

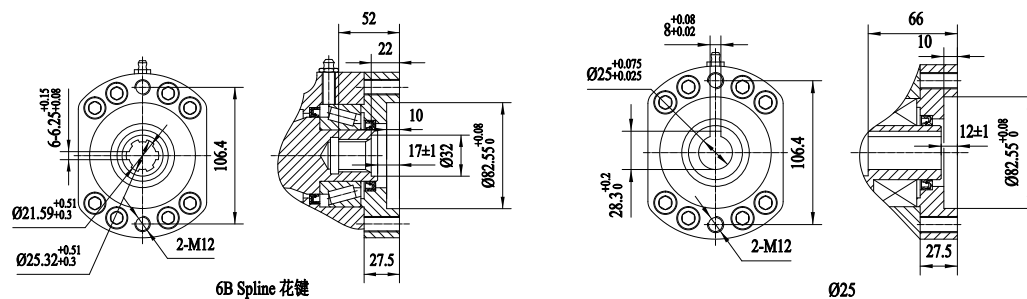
SLEWING DRIVE PERFORMANCE PARAMERERS
性能参数表

OUTPUT TORQUE	TILTING MOMENT TORQUE	HOLDING TORQUE	AXIAL LOAD	RADIAL LOAD	RATIO	BACKLASH	WEIGHT
输出转矩	倾覆力矩	保持力矩	轴向承载力	径向承载力	速比	精度	重量
35 KN.M	450 KN.M	200 KN.M	2800 KN	1120 KN	137:1	≤0.17°	224Kg
25830 LBF.FT	332*10 ³ LBF.FT	147.6*10 ³ LBF.FT	629.4*10 ³ LBF	251.77*10 ³ LBF			

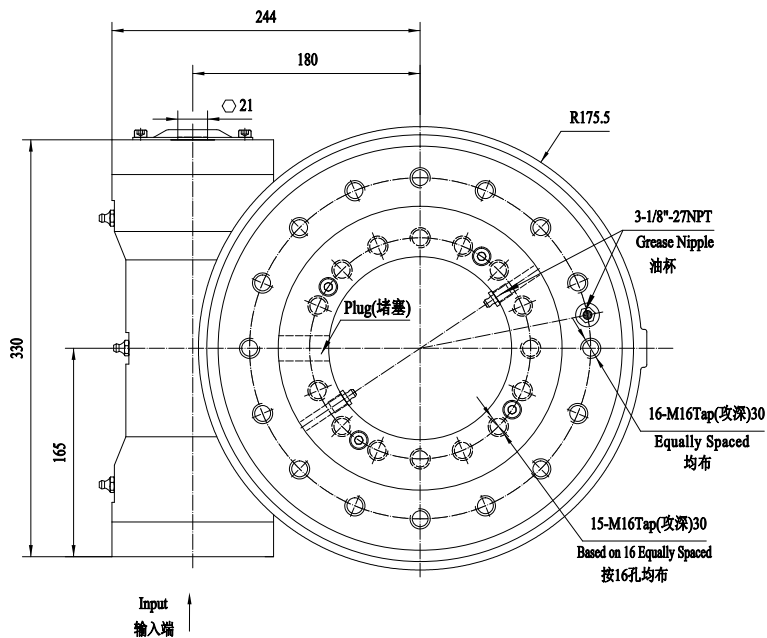
3D


MOMENT LOAD CHART


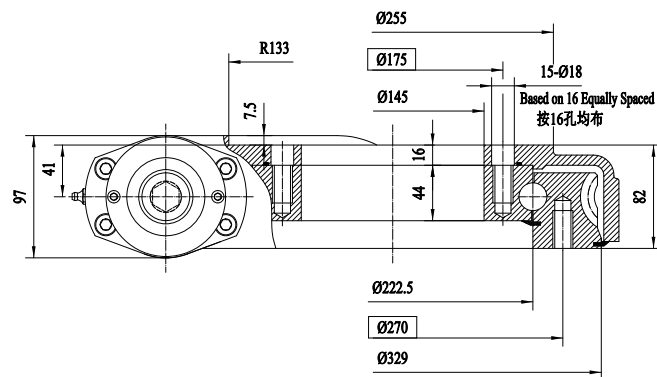
INPUT



FRONT VIEW
正视图



TOP VIEW
俯视图



NOTICE: CUSTOMIZED ACCORDING TO REQUESTS
注意: 可根据客户要求进行定制化设计

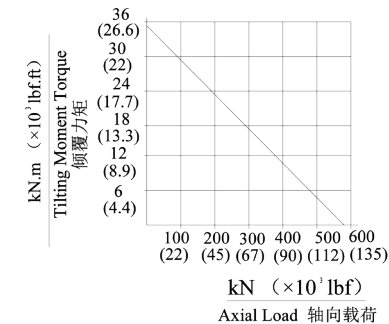
SLEWING DRIVE PERFORMANCE PARAMETERS
性能参数表

OUTPUT TORQUE	TILTING MOMENT TORQUE	HOLDING TORQUE	AXIAL LOAD	RADIAL LOAD	RATIO	BACKLASH	WEIGHT
输出转矩	倾覆力矩	保持力矩	轴向承载力	径向承载力	速比	精度	重量
8 KN.M	35.6 KN.M	39.8 KN.M	580 KN	220 KN	62:1	≤0.15°	48Kg
5904 LBF.FT	26.3*10 ³ LBF.FT	29.37*10 ³ LBF.FT	130.3*10 ³ LBF	49.4*10 ³ LBF			

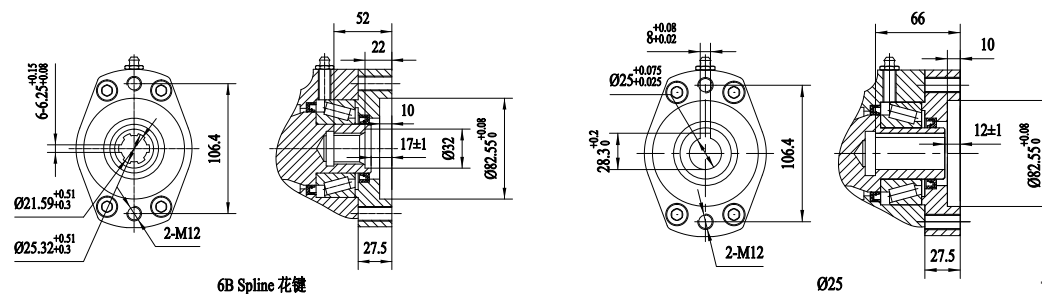
3D



MOMENT LOAD CHART
承载力矩图

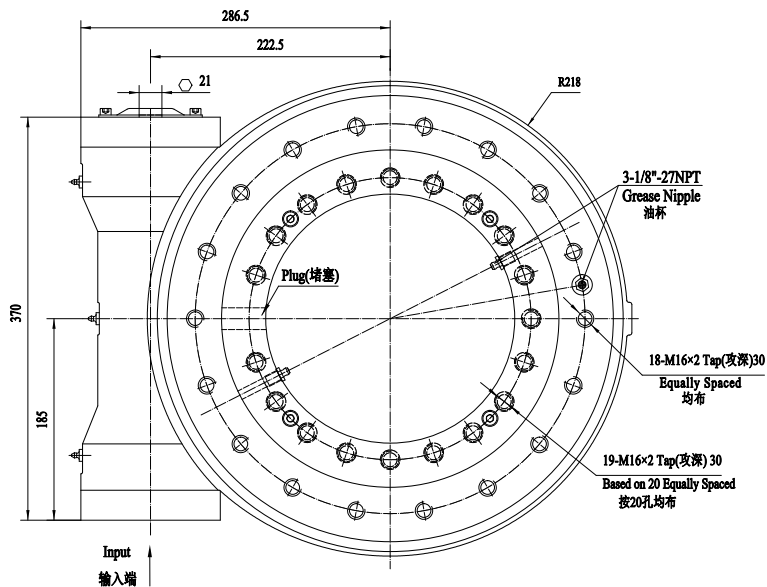
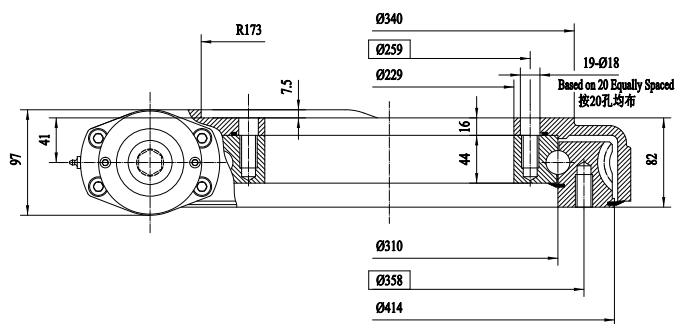


INPUT



6B Spline 花键

Ø25

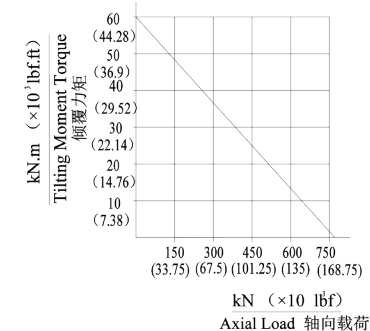
FRONT VIEW
正视图

TOP VIEW
俯视图


NOTICE: CUSTOMIZED ACCORDING TO REQUESTS
 注意: 可根据客户要求进行定制化设计

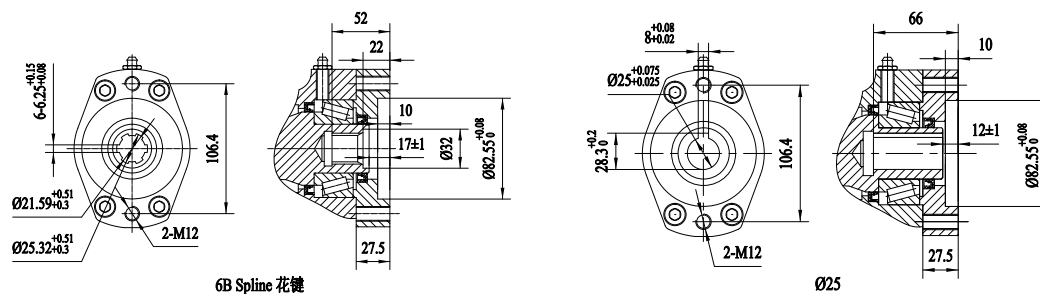
SLEWING DRIVE PERFORMANCE PARAMETERES
性能参数表

OUTPUT TORQUE	TILTING MOMENT TORQUE	HOLDING TORQUE	AXIAL LOAD	RADIAL LOAD	RATIO	BACKLASH	WEIGHT
输出转矩	倾覆力矩	保持力矩	轴向承载力	径向承载力	速比	精度	重量
9.5 KN.M	57 KN.M	44.3 KN.M	760 KN	280 KN	79:1	≤0.15°	60Kg
7011 LBF.FT	42.1*10 ³ LBF.FT	32.7*10 ³ LBF.FT	171.1*10 ³ LBF	62.9*10 ³ LBF			

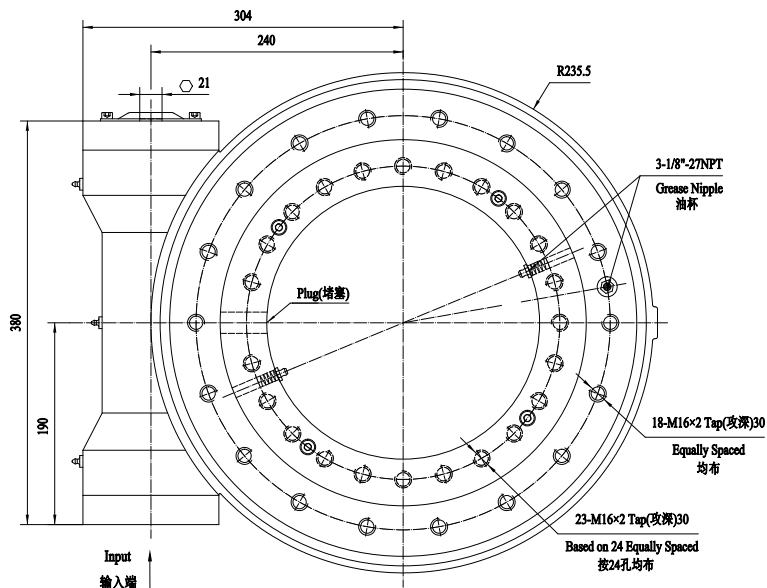
3D


MOMENT LOAD CHART
 承载力矩图


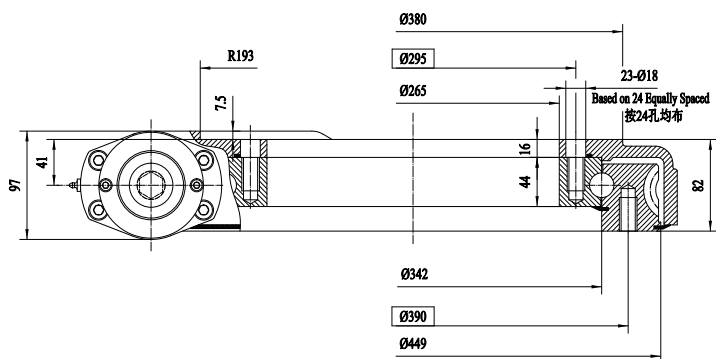
INPUT



FRONT VIEW
正视图



TOP VIEW
俯视图

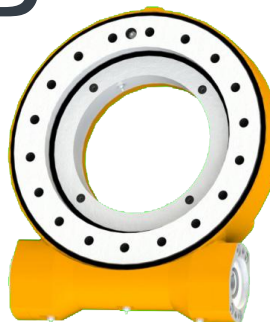


NOTICE: CUSTOMIZED ACCORDING TO REQUESTS
注意: 可根据客户要求进行定制化设计

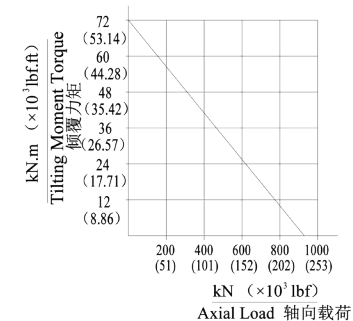
SLEWING DRIVE PERFORMANCE PARAMETERES
性能参数表

OUTPUT TORQUE	TILTING MOMENT TORQUE	HOLDING TORQUE	AXIAL LOAD	RADIAL LOAD	RATIO	BACKLASH	WEIGHT
输出转矩	倾覆力矩	保持力矩	轴向承载力	径向承载力	速比	精度	重量
10.8 KN.M	71.2 KN.M	48 KN.M	960 KN	360 KN	86:1	≤0.13°	67Kg
7970 LBF.FT	52.5*10 ³ LBF.FT	35.4*10 ³ LBF.FT	215.8*10 ³ LBF	80.9*10 ³ LBF			

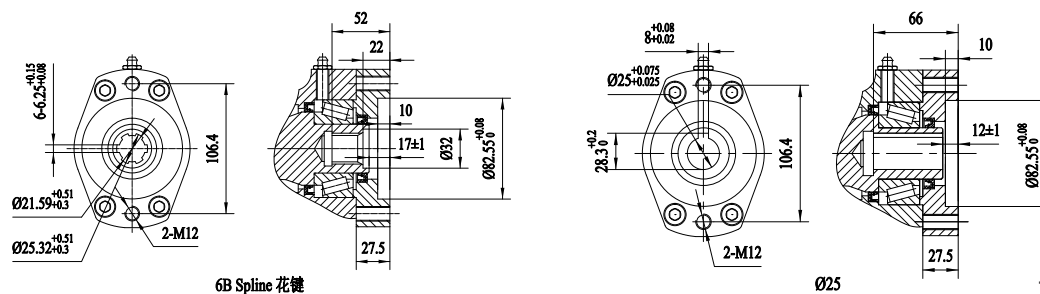
3D



MOMENT LOAD CHART
承载力矩图



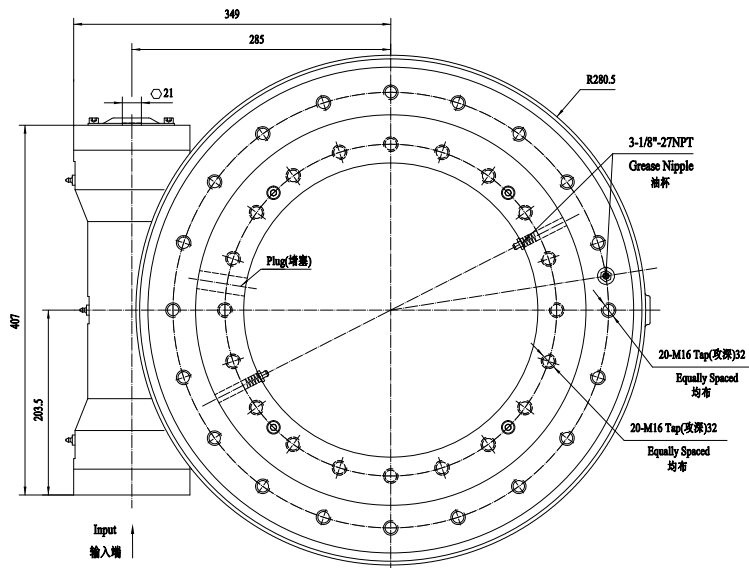
INPUT



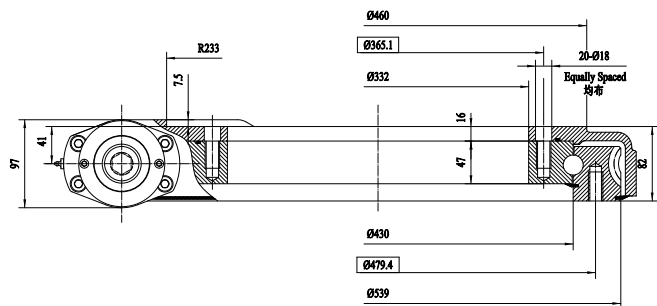
6B Spline 花键

Ø25

FRONT VIEW
正视图



TOP VIEW
俯视图



NOTICE: CUSTOMIZED ACCORDING TO REQUESTS
注意: 可根据客户要求进行定制化设计

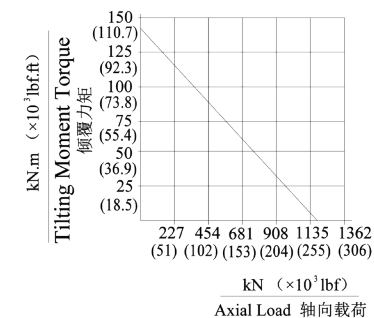
SLEWING DRIVE PERFORMANCE PARAMETERS
性能参数表

OUTPUT TORQUE	TILTING MOMENT TORQUE	HOLDING TORQUE	AXIAL LOAD	RADIAL LOAD	RATIO	BACKLASH	WEIGHT
输出转矩	倾覆力矩	保持力矩	轴向承载力	径向承载力	速比	精度	重量
12.96 KN.M	142.4 KN.M	74 KN.M	1166 KN	435 KN	104:1	≤0.1°	89Kg
9564 LBF.FT	105.1*10 ³ LBF.FT	54.6*10 ³ LBF.FT	262*10 ³ LBF	97.8*10 ³ LBF			

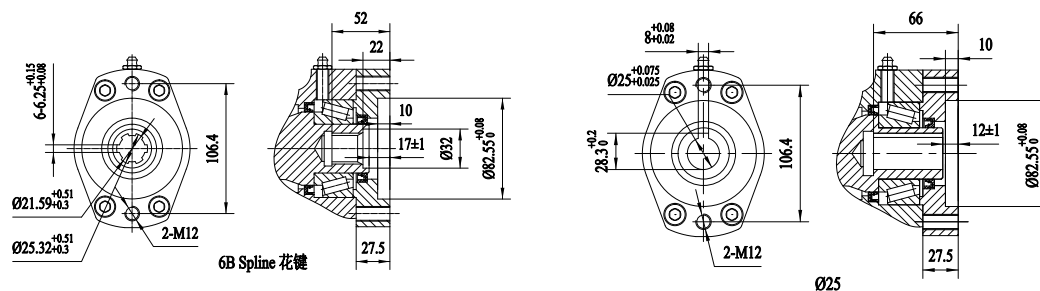
3D



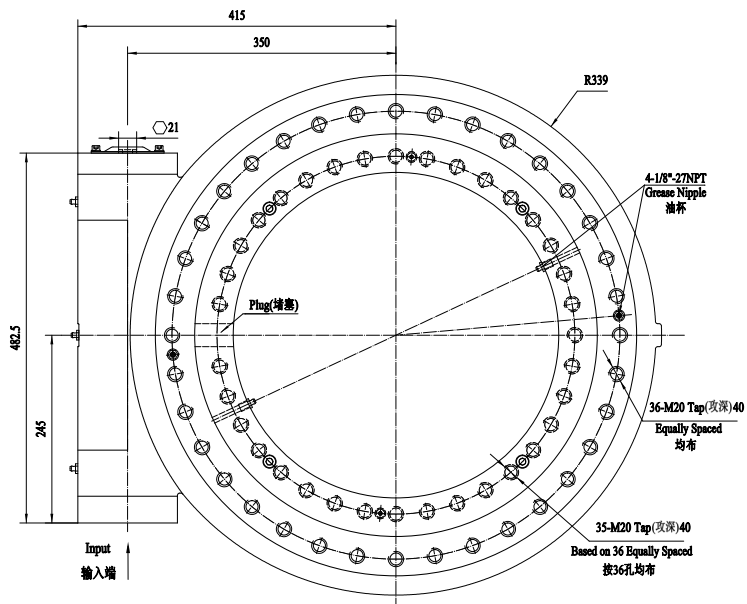
MOMENT LOAD CHART
承载力矩图



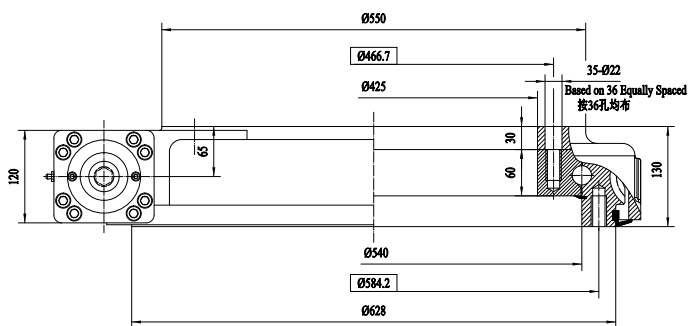
INPUT



FRONT VIEW
正视图



TOP VIEW
俯视图

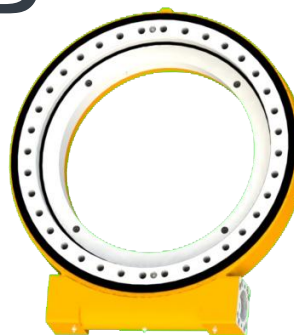


NOTICE: CUSTOMIZED ACCORDING TO REQUESTS
注意: 可根据客户要求进行定制化设计

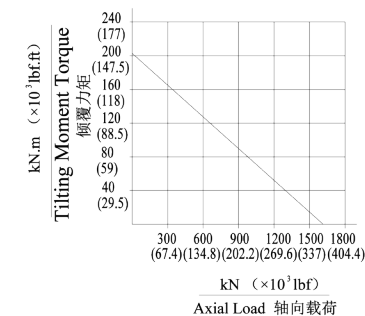
SLEWING DRIVE PERFORMANCE PARAMETERS
性能参数表

OUTPUT TORQUE	TILTING MOMENT TORQUE	HOLDING TORQUE	AXIAL LOAD	RADIAL LOAD	RATIO	BACKLASH	WEIGHT
输出转矩	倾覆力矩	保持力矩	轴向承载力	径向承载力	速比	精度	重量
28.7 KN.M	203 KN.M	107 KN.M	1600 KN	650 KN	90:1	≤0.1°	169Kg
21180 LBF.FT	150*10 ³ LBF.FT	78.9*10 ³ LBF.FT	359.7*10 ³ LBF	146*10 ³ LBF			

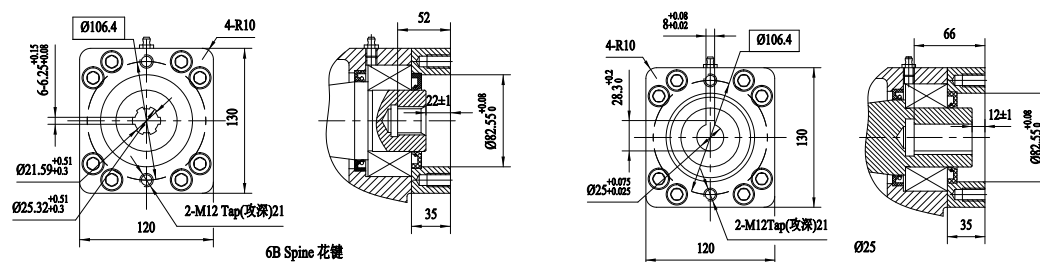
3D



MOMENT LOAD CHART
承载力矩图

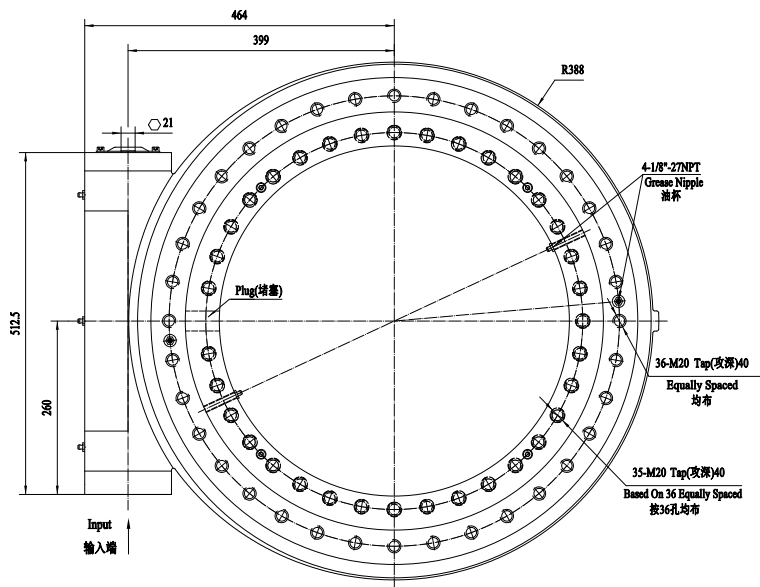


INPUT

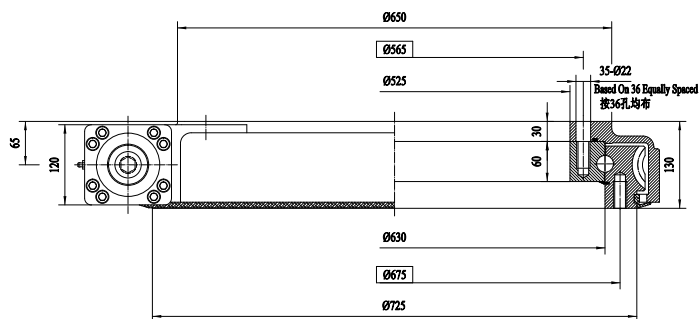


GB Spine 花键

FRONT VIEW
正视图



TOP VIEW
俯视图

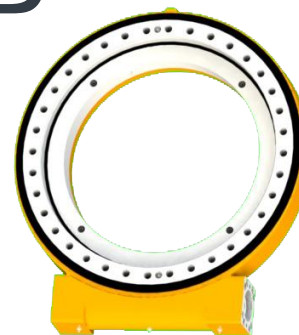


NOTICE: CUSTOMIZED ACCORDING TO REQUESTS
注意: 可根据客户要求进行定制化设计

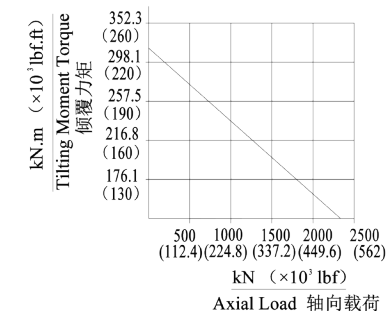
SLEWING DRIVE PERFORMANCE PARAMETERS
性能参数表

OUTPUT TORQUE	TILTING MOMENT TORQUE	HOLDING TORQUE	AXIAL LOAD	RADIAL LOAD	RATIO	BACKLASH	WEIGHT
输出转矩	倾覆力矩	保持力矩	轴向承载力	径向承载力	速比	精度	重量
34.2 KN.M	310 KN.M	160 KN.M	2400 KN	950 KN	104:1	≤0.1°	199Kg
25240 LBF.FT	229*10 ³ LBF.FT	118*10 ³ LBF.FT	539.5*10 ³ LBF	213.6*10 ³ LBF			

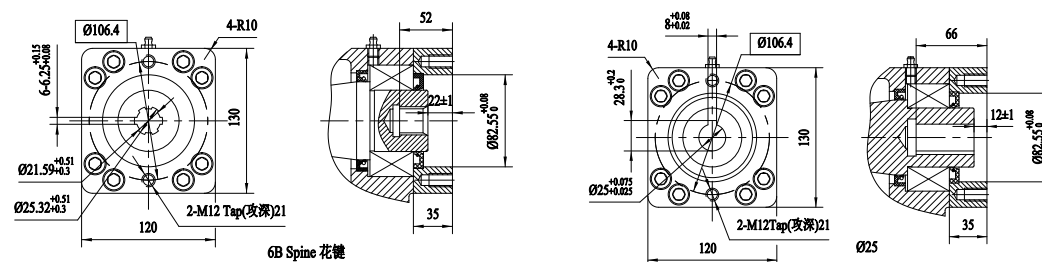
3D

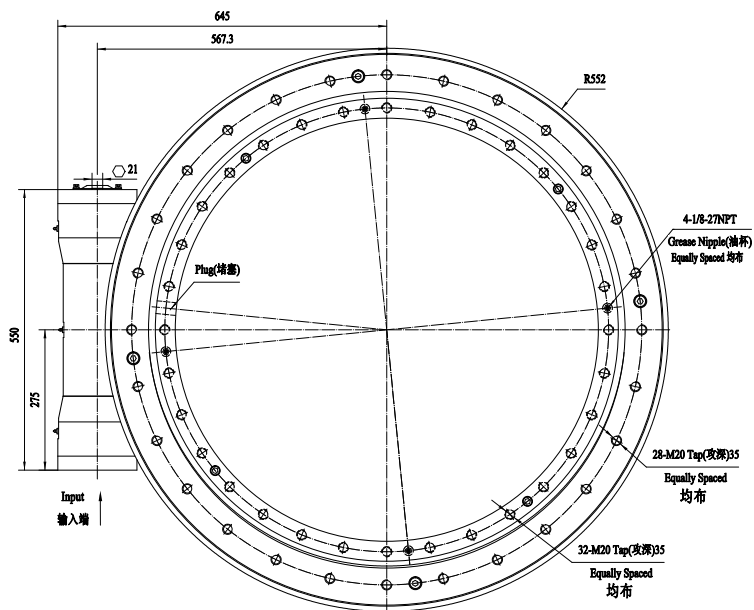
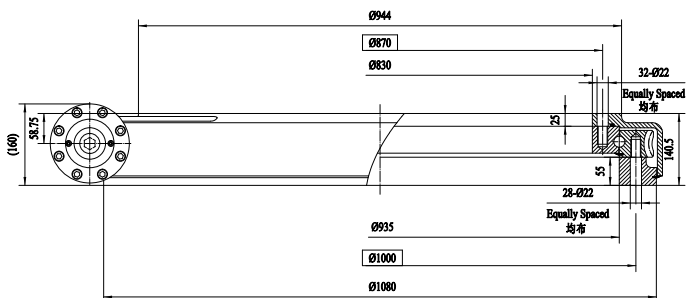


MOMENT LOAD CHART
承载力矩图



INPUT



FRONT VIEW
 正视图

TOP VIEW
 俯视图


NOTICE: CUSTOMIZED ACCORDING TO REQUESTS
 注意: 可根据客户要求进行定制化设计

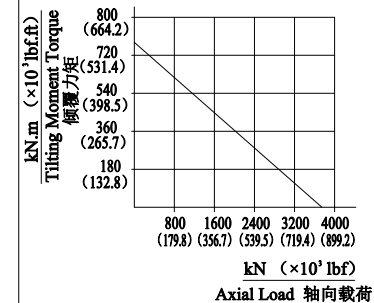
SLEWING DRIVE PERFORMANCE PARAMERERS
 性能参数表

OUTPUT TORQUE	TILTING MOMENT TORQUE	HOLDING TORQUE	AXIAL LOAD	RADIAL LOAD	RATIO	BACKLASH	WEIGHT
输出转矩	倾覆力矩	保持力矩	轴向承载力	径向承载力	速比	精度	重量
50 KN.M	750 KN.M	250KN.M	3600 KN	1500 KN	150:1	≤0.15°	380Kg
36900 LBF.FT	553.5*10 ³ LBF.FT	184.5*10 ³ LBF.FT	809.3*10 ³ LBF	337*10 ³ LBF			

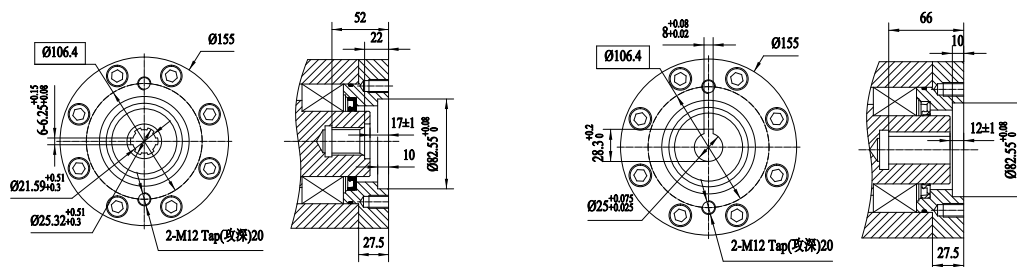
3D


MOMENT LOAD CHART

承载力矩图



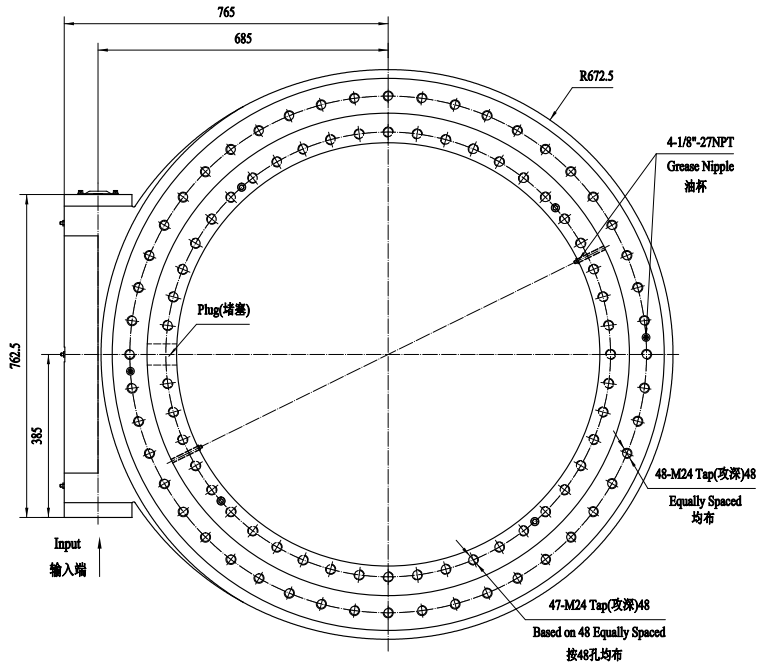
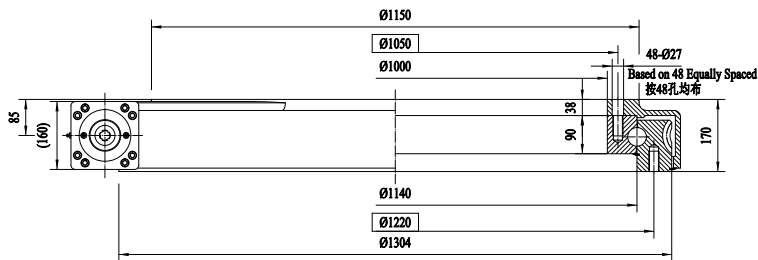
INPUT



6B Spline 花键

025

22

FRONT VIEW
正视图

TOP VIEW
俯视图


NOTICE: CUSTOMIZED ACCORDING TO REQUESTS
 注意: 可根据客户要求进行定制化设计

SLEWING DRIVE PERFORMANCE PARAMETERES

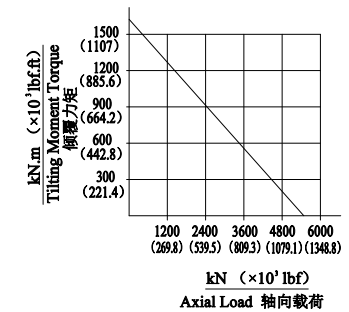
性能参数表

OUTPUT TORQUE	TILTING MOMENT TORQUE	HOLDING TORQUE	AXIAL LOAD	RADIAL LOAD	RATIO	BACKLASH	WEIGHT
输出转矩	倾覆力矩	保持力矩	轴向承载力	径向承载力	速比	精度	重量
58 KN.M	1600 KN.M	360 KN.M	5500 KN	2200 KN	160:1	≤0.15°	750Kg
42800 LBF.FT	1181*10 ³ LBF.FT	266*10 ³ LBF.FT	1236*10 ³ LBF	495*10 ³ LBF			

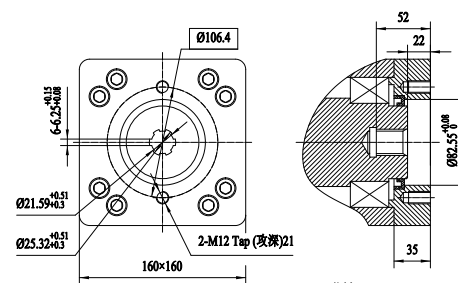
3D


MOMENT LOAD CHART

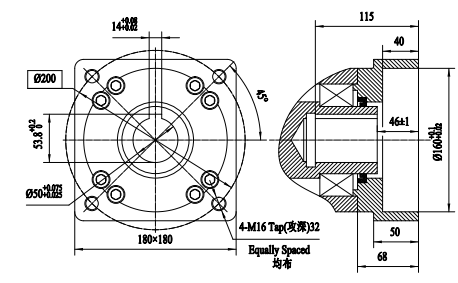
承载力矩图



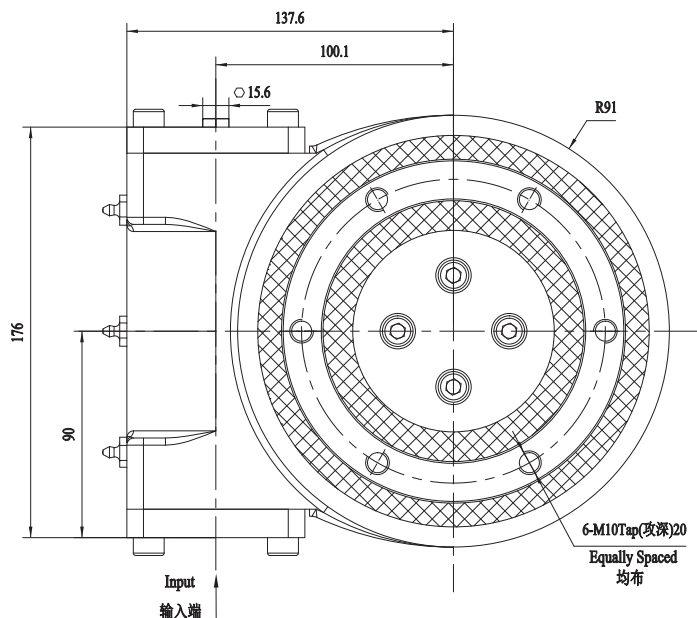
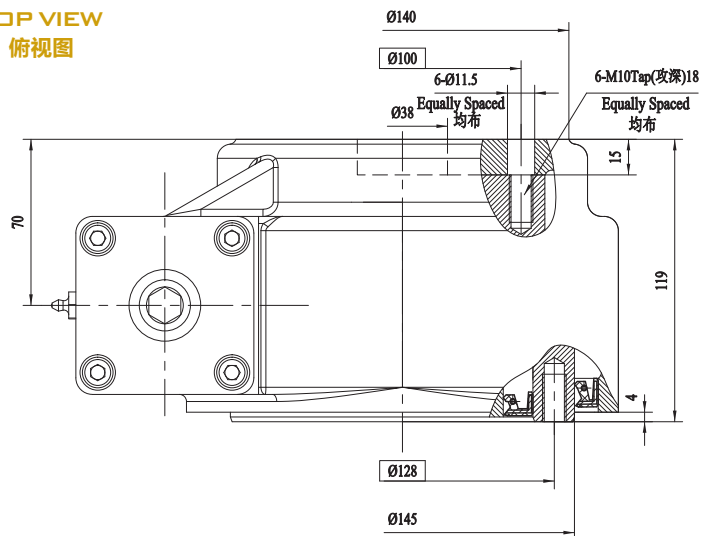
INPUT



6B Spine 花键



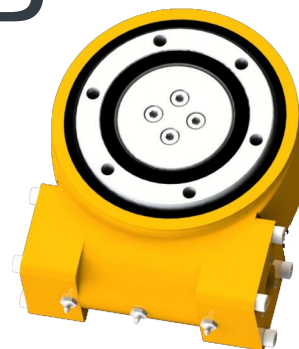
Ø50

FRONT VIEW
 正视图

TOP VIEW
 俯视图

SLEWING DRIVE PERFORMANCE PARAMERERS

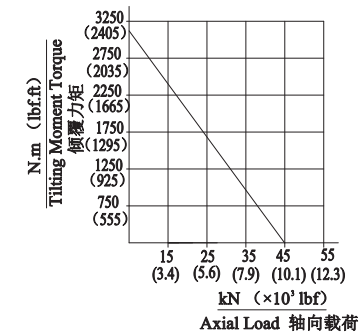
性能参数表

OUTPUT TORQUE	TILTING MOMENT TORQUE	HOLDING TORQUE	AXIAL LOAD	RADIAL LOAD	RATIO	BACKLASH	WEIGHT
输出转矩	倾覆力矩	保持力矩	轴向承载力	径向承载力	速比	精度	重量
600 N.M	3000 N.M	5500 N.M	45 KN	22 KN	62:1	≤0.20°	16Kg
443 LBF.FT	2212.5 LBF.FT	4056 LBF.FT	1116 LBF	4945 LBF			

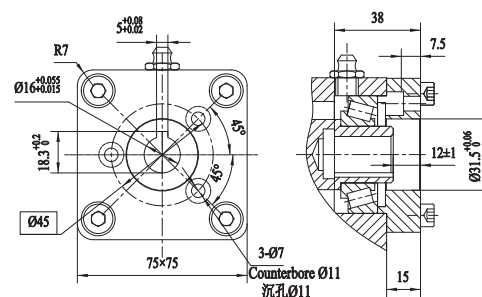
3D


MOMENT LOAD CHART

承载力矩图

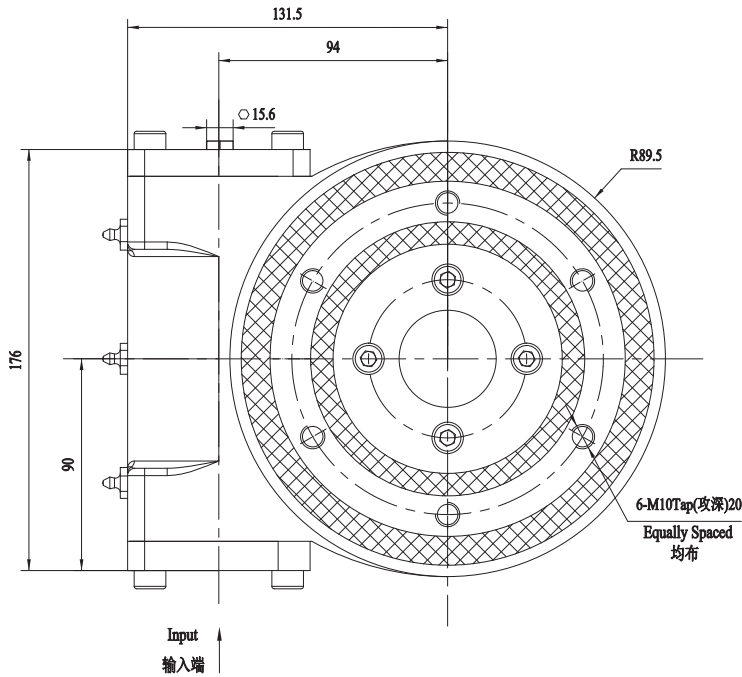
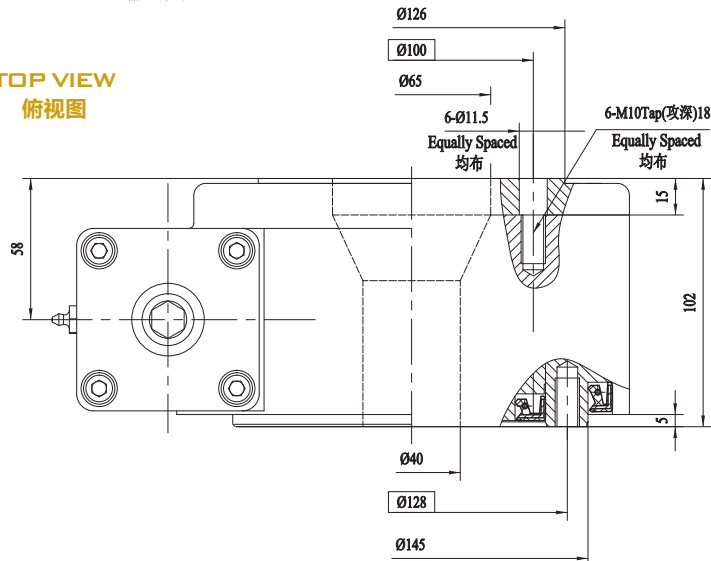


INPUT


NOTICE:

注意:

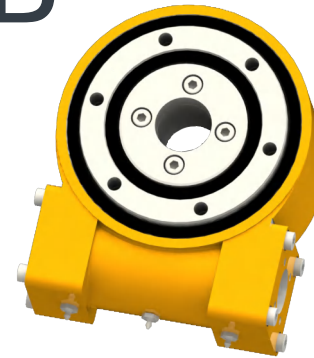
 CUSTOMIZED ACCORDING TO REQUESTS
 可根据客户要求定制化设计

FRONT VIEW
 正视图

TOP VIEW
 俯视图

SLEWING DRIVE PERFORMANCE PARAMERERS

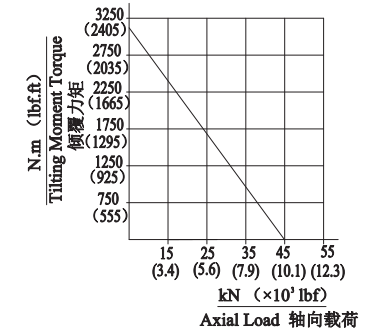
性能参数表

OUTPUT TORQUE	TILTING MOMENT TORQUE	HOLDING TORQUE	AXIAL LOAD	RADIAL LOAD	RATIO	BACKLASH	WEIGHT
输出转矩	倾覆力矩	保持力矩	轴向承载力	径向承载力	速比	精度	重量
600 N.M	2800 N.M	5000 N.M	45 KN	22 KN	62:1	≤0.20°	16Kg
443 LBF.FT	2066 LBF.FT	3690 LBF.FT	10116 LBF	4945 LBF			

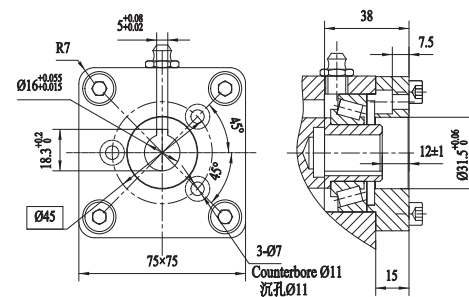
3D


MOMENT LOAD CHART

承载力矩图

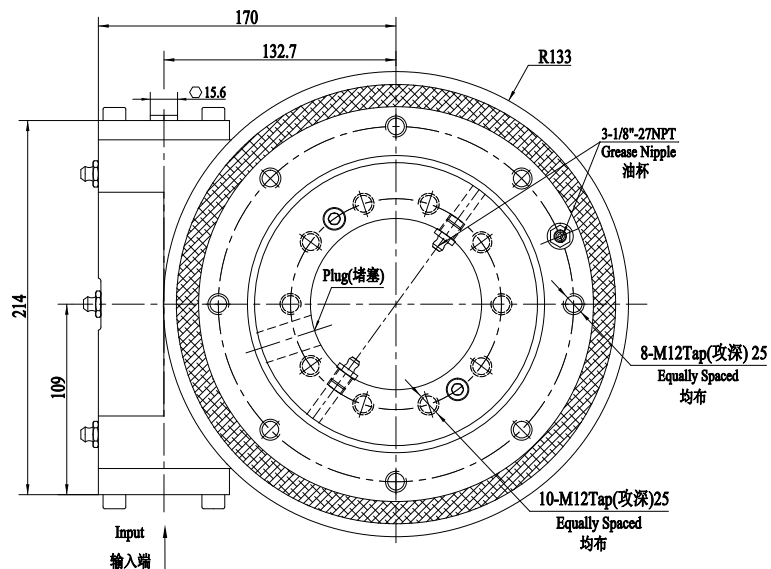
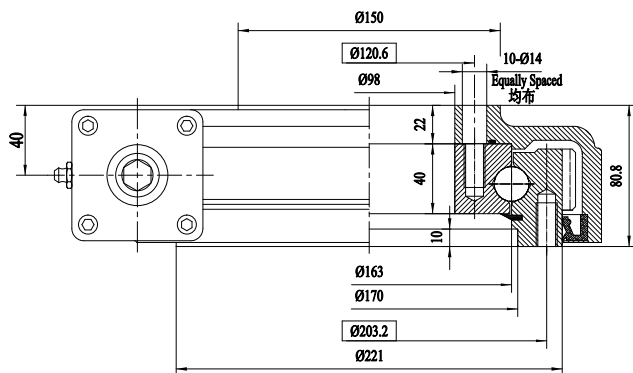


INPUT


NOTICE:

注意:

 CUSTOMIZED ACCORDING TO REQUESTS
 可根据客户要求进行定制化设计

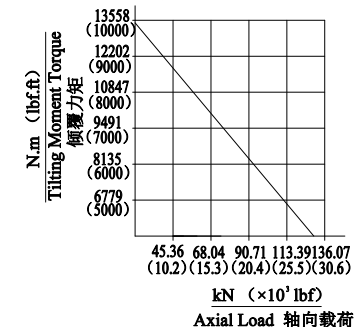
FRONT VIEW
正视图

TOP VIEW
俯视图

SLEWING DRIVE PERFORMANCE PARAMETERS
性能参数表

OUTPUT TORQUE	TILTING MOMENT TORQUE	HOLDING TORQUE	AXIAL LOAD	RADIAL LOAD	RATIO	BACKLASH	WEIGHT
输出转矩	倾覆力矩	保持力矩	轴向承载力	径向承载力	速比	精度	重量
1500 N.M	13500 N.M	10600 N.M	135 KN	53 KN	73:1	≤0.20°	25Kg
1107 LBF.FT	9957 LBF.FT	7822 LBF.FT	30348 LBF	11915 LBF			

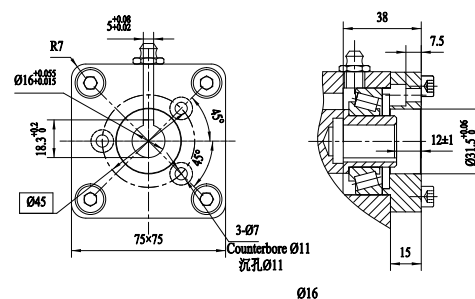
3D


MOMENT LOAD CHART

承载力矩图



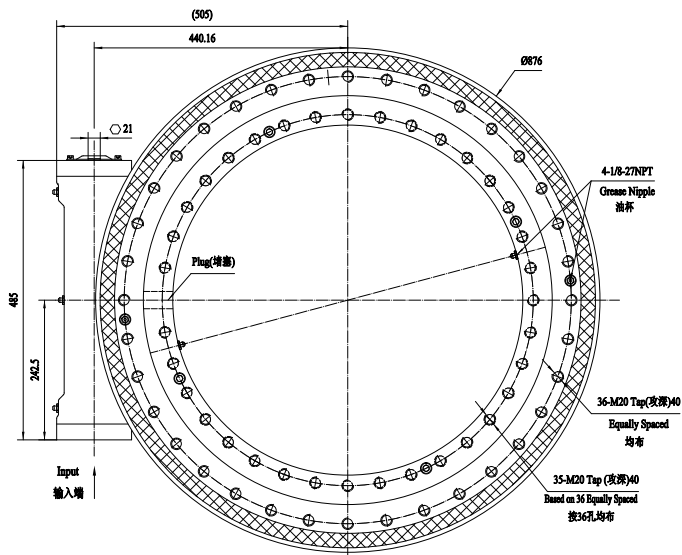
INPUT


NOTICE:

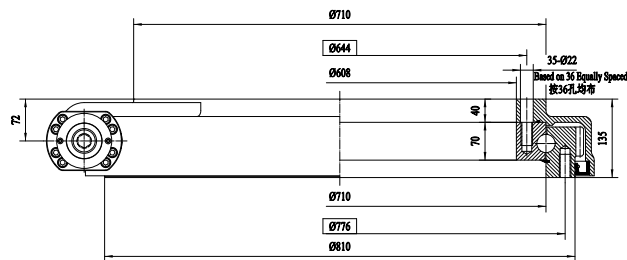
注意:

 CUSTOMIZED ACCORDING TO REQUESTS
 可根据客户要求进行定制化设计

FRONT VIEW
正视图



TOP VIEW
俯视图



NOTICE: CUSTOMIZED ACCORDING TO REQUESTS
注意: 可根据客户要求进行定制化设计

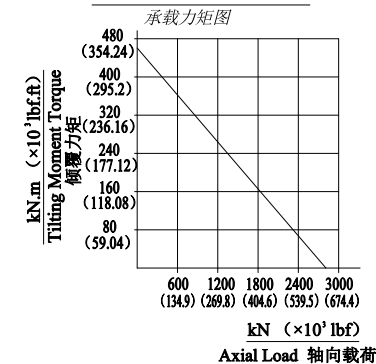
SLEWING DRIVE PERFORMANCE PARAMETERS
性能参数表

OUTPUT TORQUE	TILTING MOMENT TORQUE	HOLDING TORQUE	AXIAL LOAD	RADIAL LOAD	RATIO	BACKLASH	WEIGHT
输出转矩	倾覆力矩	保持力矩	轴向承载力	径向承载力	速比	精度	重量
28 KN.M	450 KN.M	200 KN.M	2800 KN	1120 KN	137:1	≤0.15°	224Kg
20664 LBF.FT	332*10 ³ LBF.FT	147.6*10 ³ LBF.FT	629.4*10 ³ LBF	251.77*10 ³ LBF			

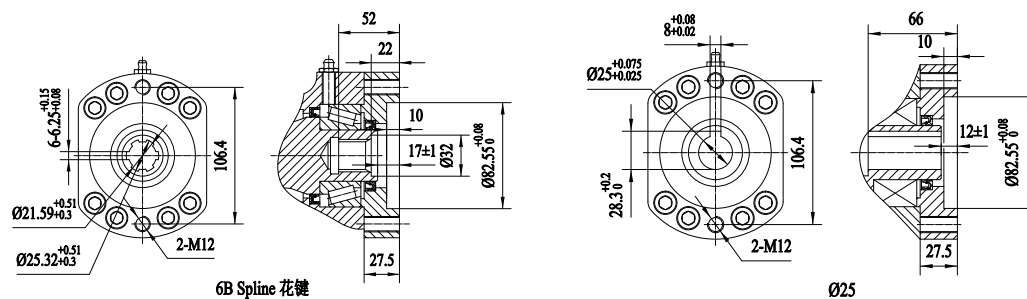
3D



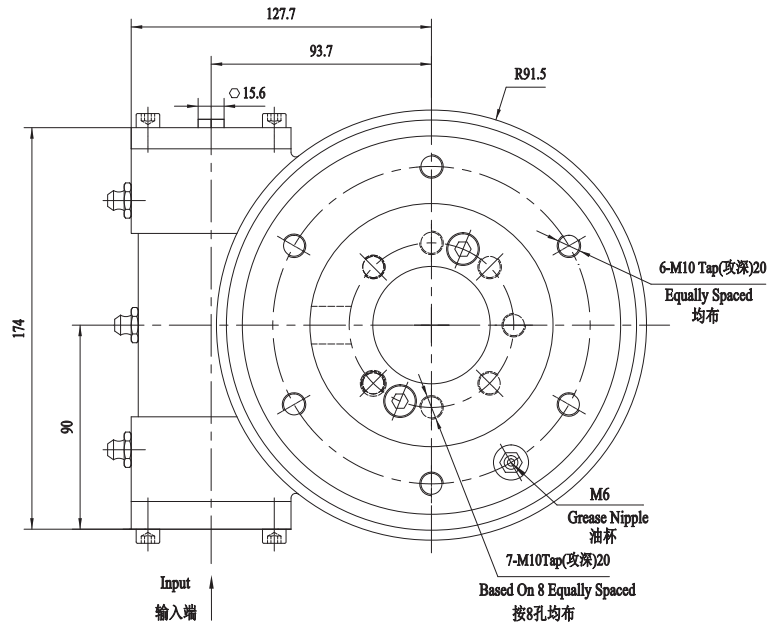
MOMENT LOAD CHART



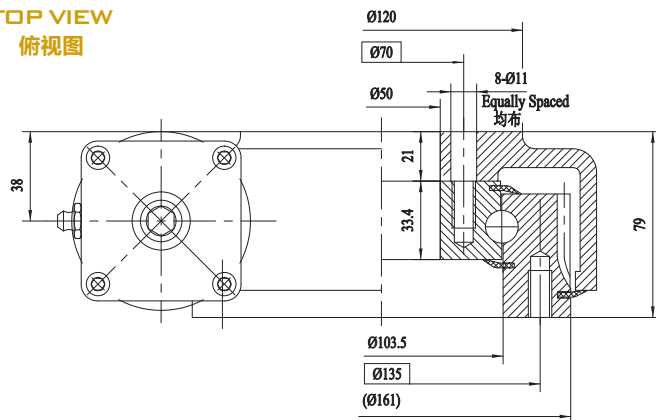
INPUT



FRONT VIEW 正视图



TOP VIEW 俯视图

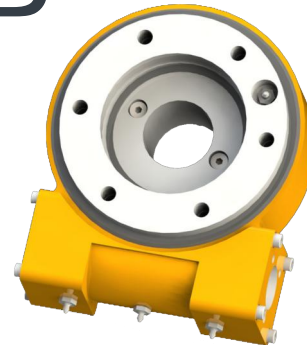


SLEWING DRIVE PERFORMANCE PARAMETERERS

性能参数表

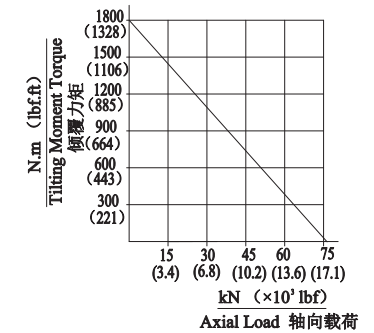
OUTPUT TORQUE	TILTING MOMENT TORQUE	HOLDING TORQUE	AXIAL LOAD	RADIAL LOAD	RATIO	BACKLASH	WEIGHT
输出转矩	倾覆力矩	保持力矩	轴向承载力	径向承载力	速比	精度	重量
600 N.M	1800 N.M	5200 N.M	76 KN	23 KN	62:1	≤0.20°	16Kg
443 LBF.FT	1328 LBF.FT	3837 LBF.FT	17084 LBF	5170 LBF			

3D

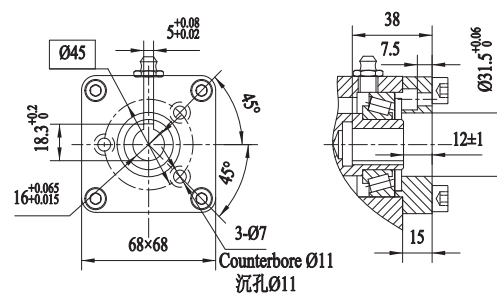


MOMENT LOAD CHART

承载力矩图



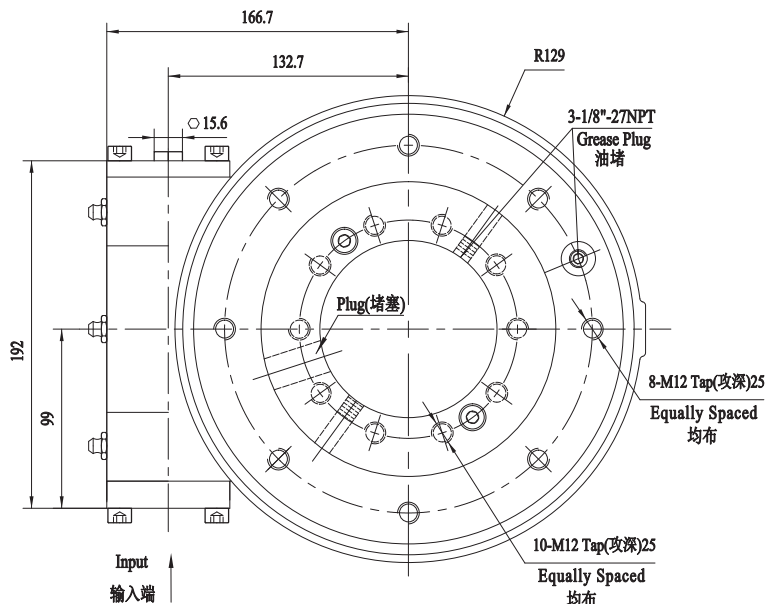
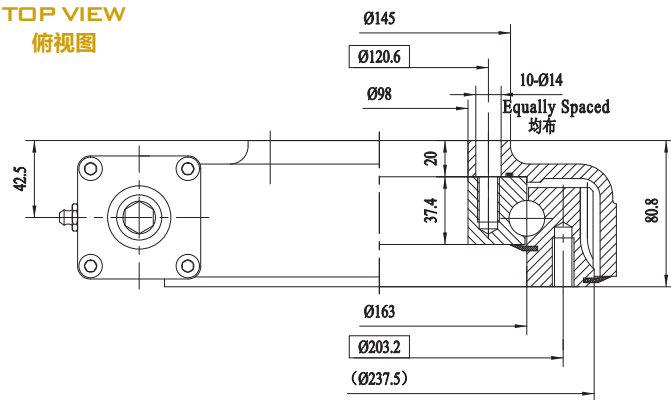
INPUT



NOTICE:

注意:

CUSTOMIZED ACCORDING TO REQUESTS
可根据客户要求进行定制化设计

FRONT VIEW
 正视图

TOP VIEW
 俯视图

SLEWING DRIVE PERFORMANCE PARAMERERS

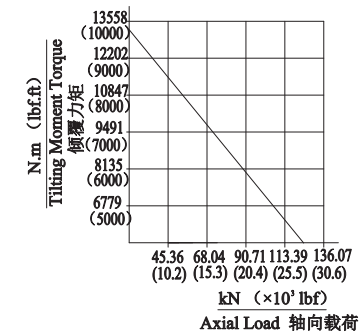
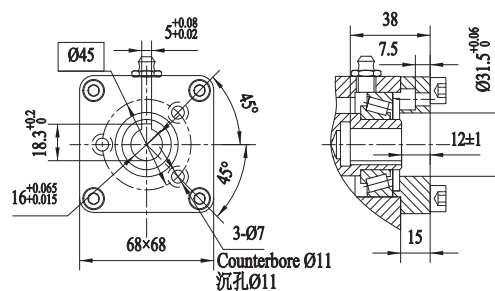
性能参数表

OUTPUT TORQUE	TILTING MOMENT TORQUE	HOLDING TORQUE	AXIAL LOAD	RADIAL LOAD	RATIO	BACKLASH	WEIGHT
输出转矩	倾覆力矩	保持力矩	轴向承载力	径向承载力	速比	精度	重量
1500 N.M	13500 N.M	10600 N.M	135 KN	53 KN	73:1	≤0.20°	24Kg
1107 LBF.FT	9957 LBF.FT	7822 LBF.FT	30348 LBF	11915 LBF			

3D


MOMENT LOAD CHART

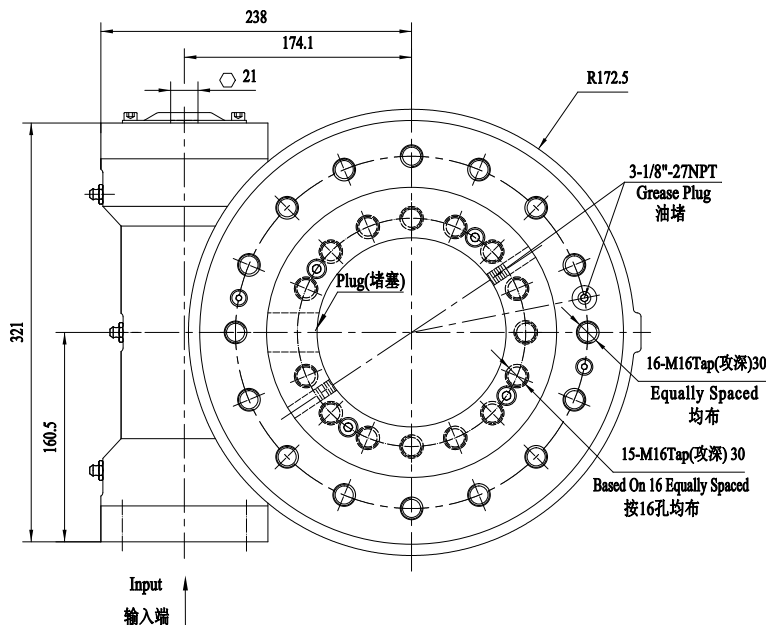
承载力矩图


INPUT

NOTICE:

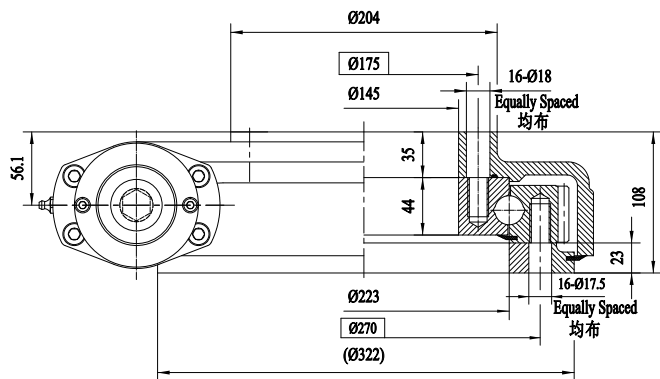
注意:

 CUSTOMIZED ACCORDING TO REQUESTS
 可根据客户要求进行定制化设计

FRONT VIEW
正视图



TOP VIEW
俯视图

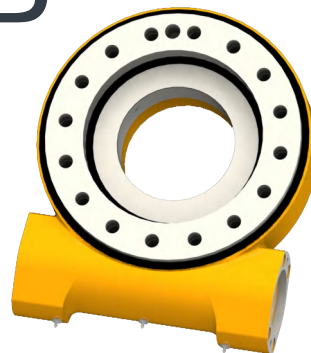


NOTICE: CUSTOMIZED ACCORDING TO REQUESTS
注意: 可根据客户要求进行定制化设计

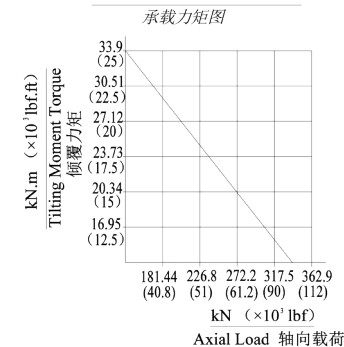
SLEWING DRIVE PERFORMANCE PARAMERERS
性能参数表

OUTPUT TORQUE	TILTING MOMENT TORQUE	HOLDING TORQUE	AXIAL LOAD	RADIAL LOAD	RATIO	BACKLASH	WEIGHT
输出转矩	倾覆力矩	保持力矩	轴向承载力	径向承载力	速比	精度	重量
6.5 KN.M	33.9 KN.M	40 KN.M	340 KN	138 KN	61:1	≤0.17°	49Kg
4794 LBF.FT	25*10 ³ LBF.FT	29.5*10 ³ LBF.FT	76.4*10 ³ LBF	31*10 ³ LBF			

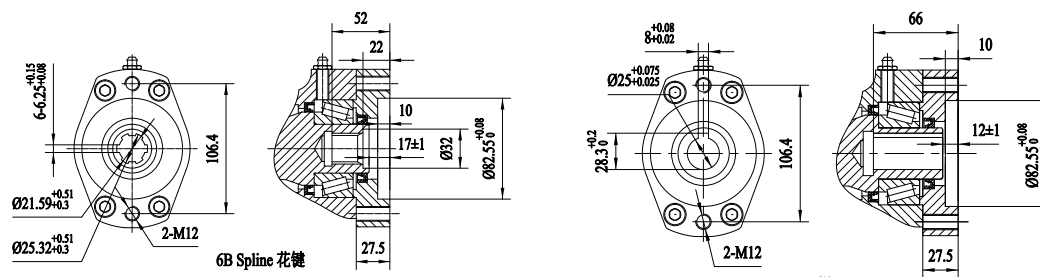
3D

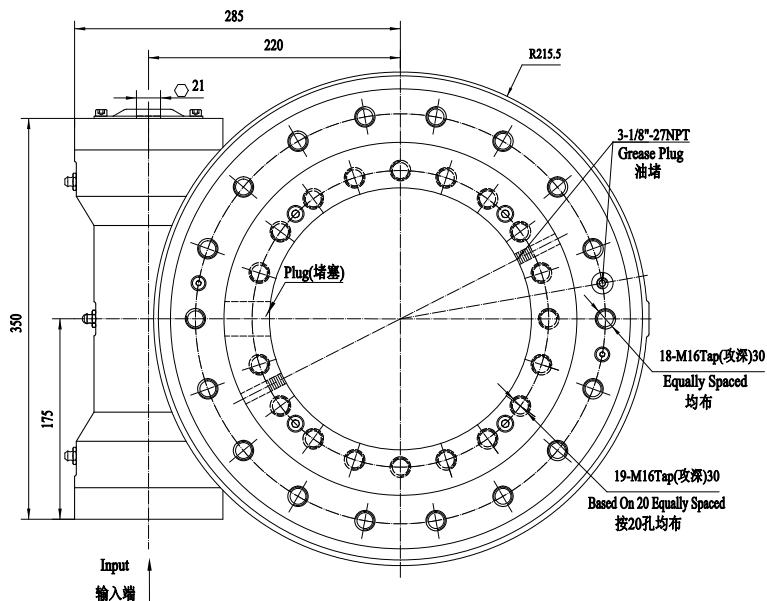
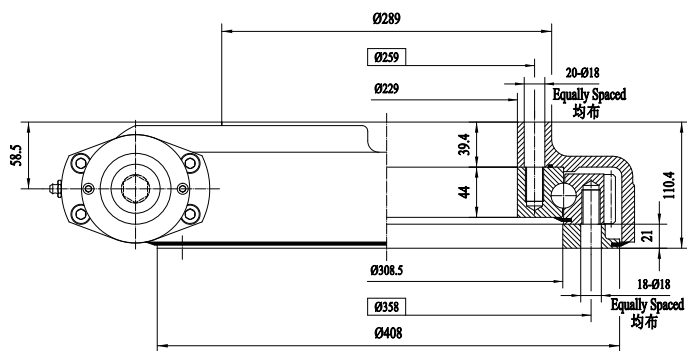


MOMENT LOAD CHART



INPUT



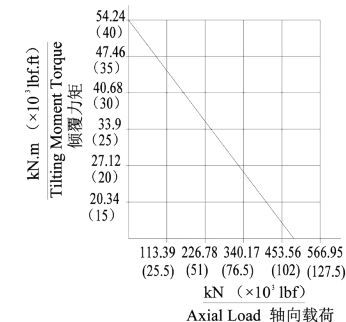
FRONT VIEW
正视图

TOP VIEW
俯视图


NOTICE: CUSTOMIZED ACCORDING TO REQUESTS
 注意: 可根据客户要求进行定制化设计

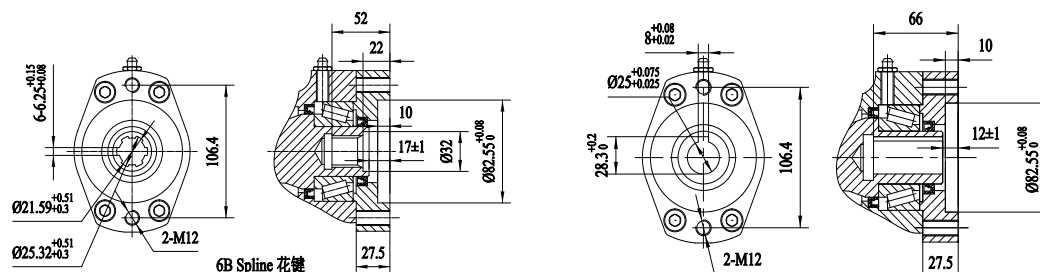
SLEWING DRIVE PERFORMANCE PARAMERERS
性能参数表

OUTPUT TORQUE	TILTING MOMENT TORQUE	HOLDING TORQUE	AXIAL LOAD	RADIAL LOAD	RATIO	BACKLASH	WEIGHT
输出转矩	倾覆力矩	保持力矩	轴向承载力	径向承载力	速比	精度	重量
7.5 KN.M	54.3 KN.M	45 KN.M	475 KN	190 KN	78:1	≤0.17°	60KG
5532 LBF.FT	40*10 ³ LBF.FT	33.2*10 ³ LBF.FT	107*10 ³ LBF	43*10 ³ LBF			

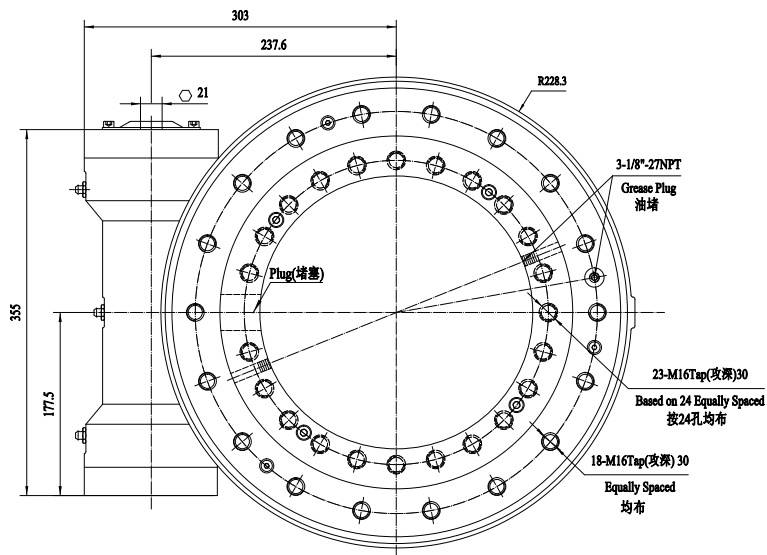
3D


MOMENT LOAD CHART
 承载力矩图


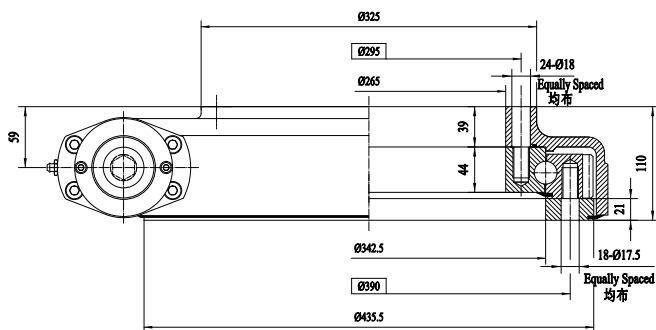
INPUT



FRONT VIEW
正视图



TOP VIEW
俯视图



NOTICE: CUSTOMIZED ACCORDING TO REQUESTS
注意: 可根据客户要求进行定制化设计

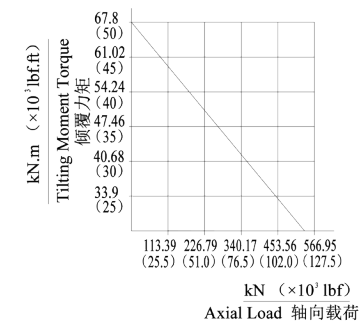
SLEWING DRIVE PERFORMANCE PARAMETERERS
性能参数表

OUTPUT TORQUE	TILTING MOMENT TORQUE	HOLDING TORQUE	AXIAL LOAD	RADIAL LOAD	RATIO	BACKLASH	WEIGHT
输出转矩	倾覆力矩	保持力矩	轴向承载力	径向承载力	速比	精度	重量
8 KN.M	67.8 KN.M	49 KN.M	555 KN	222 KN	85:1	≤0.17°	65Kg
5900 LBF.FT	50*10 ³ LBF.FT	35*10 ³ LBF.FT	125*10 ³ LBF	50*10 ³ LBF			

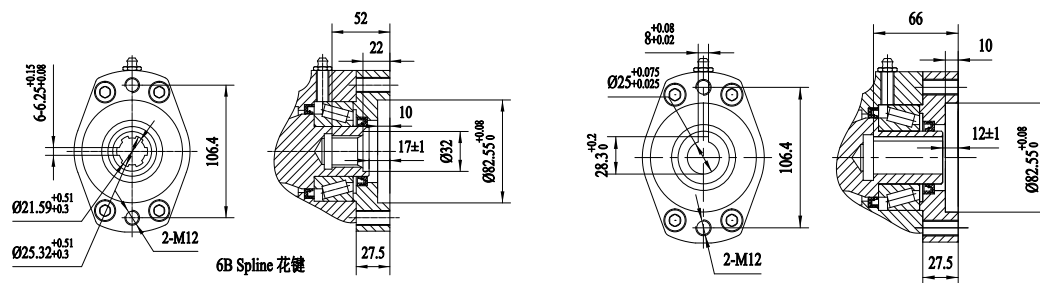
3D



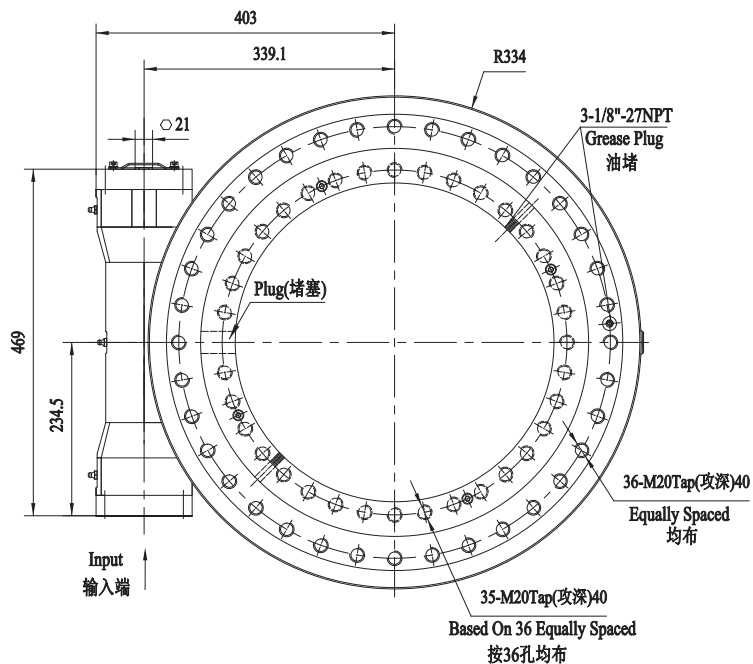
MOMENT LOAD CHART
承载力矩图



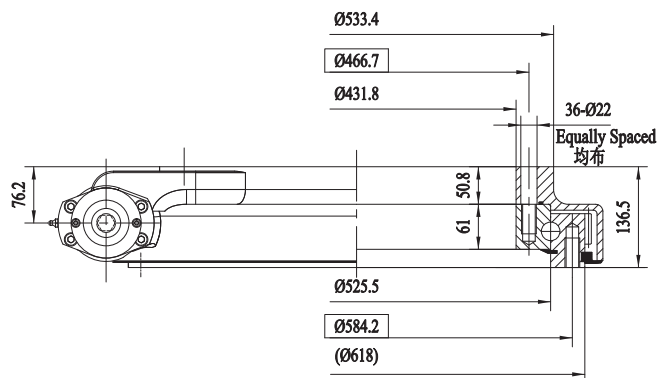
INPUT



FRONT VIEW
正视图



TOP VIEW
俯视图

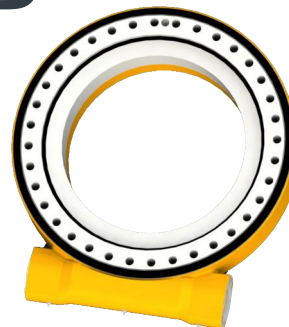


NOTICE: CUSTOMIZED ACCORDING TO REQUESTS
注意: 可根据客户要求进行定制化设计

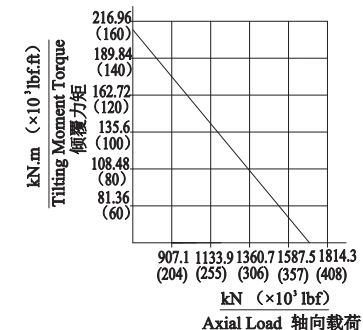
SLEWING DRIVE PERFORMANCE PARAMETERS
性能参数表

OUTPUT TORQUE	TILTING MOMENT TORQUE	HOLDING TORQUE	AXIAL LOAD	RADIAL LOAD	RATIO	BACKLASH	WEIGHT
输出转矩	倾覆力矩	保持力矩	轴向承载力	径向承载力	速比	精度	重量
15 KN.M	203 KN.M	106 KN.M	1600 KN	650 KN	125:1	≤0.15°	150Kg
11000 LBF.FT	150*10 ³ LBF.FT	78.2*10 ³ LBF.FT	359.7*10 ³ LBF	146.1*10 ³ LBF			

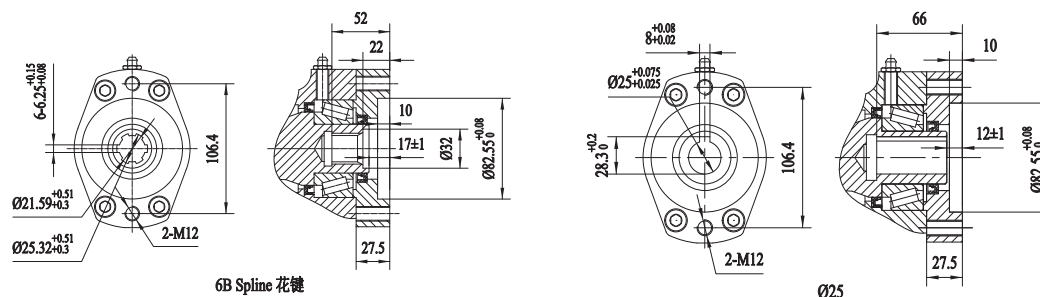
3D



MOMENT LOAD CHART
承载力矩图

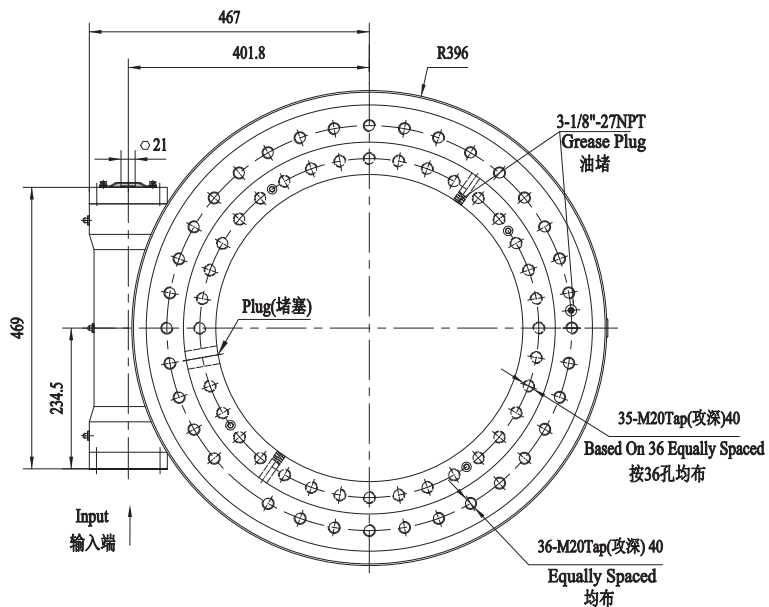
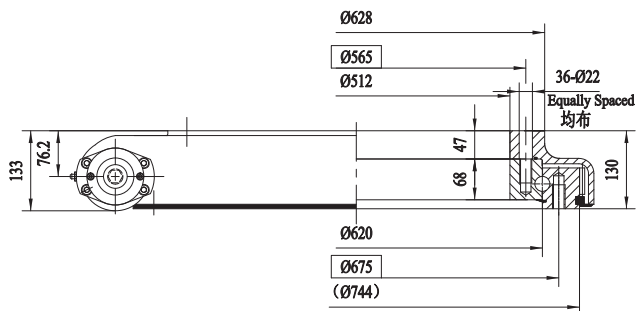


INPUT



6B Spline 花键

Ø25

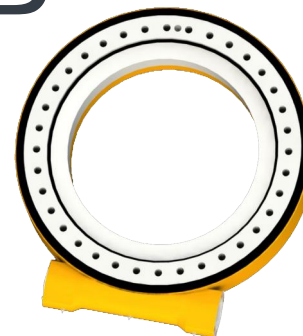
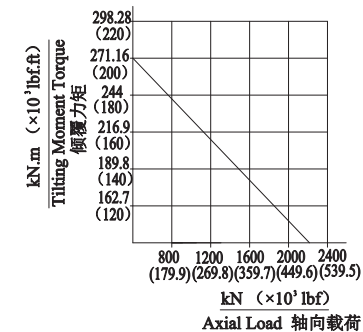
FRONT VIEW
正视图

TOP VIEW
俯视图


NOTICE: CUSTOMIZED ACCORDING TO REQUESTS
 注意: 可根据客户要求进行定制化设计

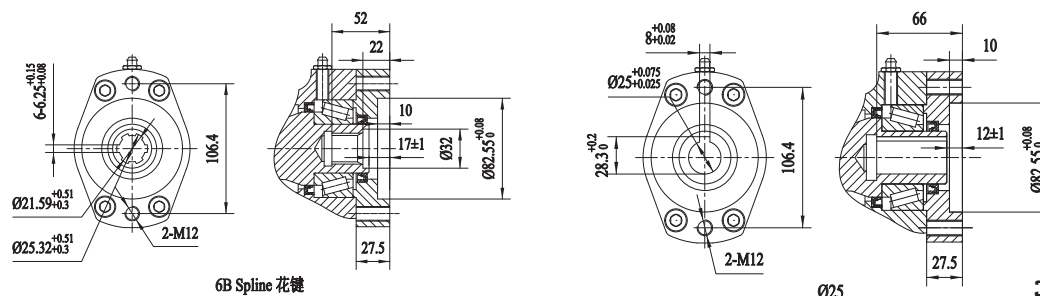
SLEWING DRIVE PERFORMANCE PARAMERERS
性能参数表

OUTPUT TORQUE	TILTING MOMENT TORQUE	HOLDING TORQUE	AXIAL LOAD	RADIAL LOAD	RATIO	BACKLASH	WEIGHT
输出转矩	倾覆力矩	保持力矩	轴向承载力	径向承载力	速比	精度	重量
18 KN.M	271 KN.M	159 KN.M	2400 KN	950 KN	150:1	≤0.15°	205Kg
13300 LBF.FT	200*10 ³ LBF.FT	117.3*10 ³ LBF.FT	539.5*10 ³ LBF	213.6*10 ³ LBF			

3D


MOMENT LOAD CHART
 承载力矩图


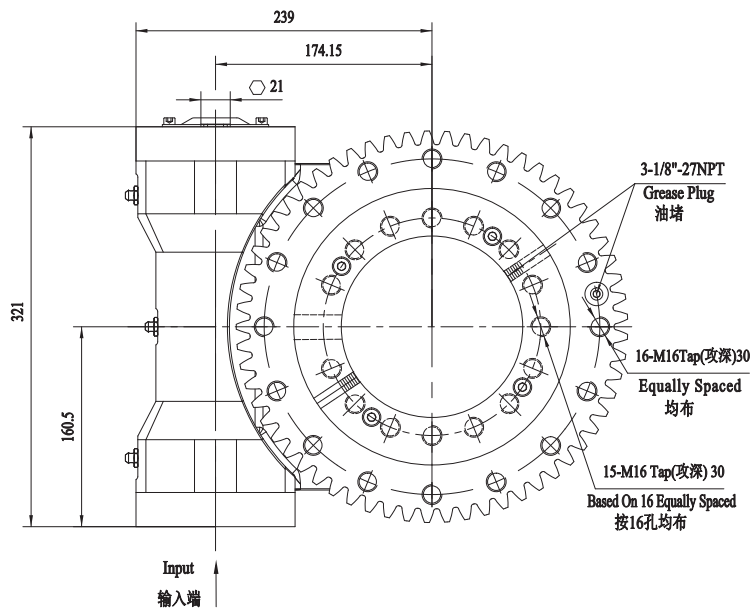
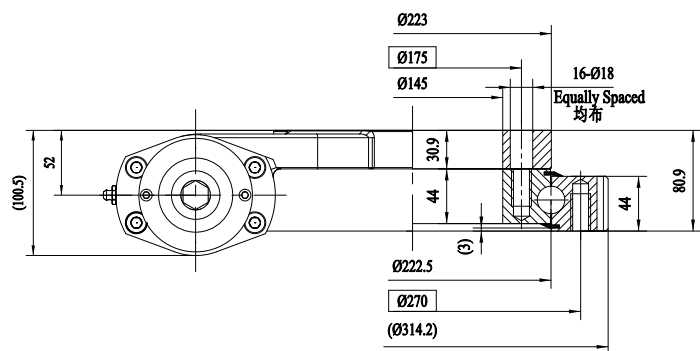
INPUT



6B Spline 花键

025

36

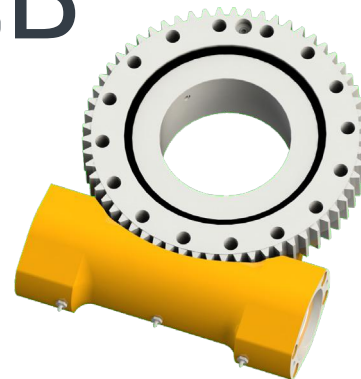
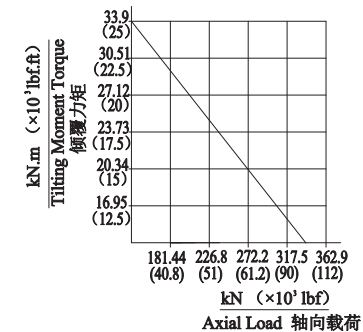
FRONT VIEW
 正视图

TOP VIEW
 俯视图


NOTICE: CUSTOMIZED ACCORDING TO REQUESTS
 注意: 可根据客户要求进行定制化设计

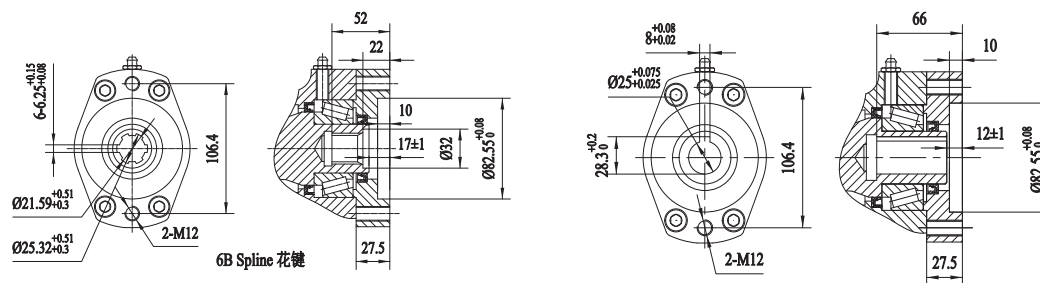
SLEWING DRIVE PERFORMANCE PARAMERERS
 性能参数表

OUTPUT TORQUE	TILTING MOMENT TORQUE	HOLDING TORQUE	AXIAL LOAD	RADIAL LOAD	RATIO	BACKLASH	WEIGHT
输出转矩	倾覆力矩	保持力矩	轴向承载力	径向承载力	速比	精度	重量
6.5 KN.M	33.9 KN.M	40 KN.M	340 KN	138 KN	61:1	≤0.17°	36Kg
4794 LBF.FT	25*10 ³ LBF.FT	29.5*10 ³ LBF.FT	76.4*10 ³ LBF	31*10 ³ LBF			

3D

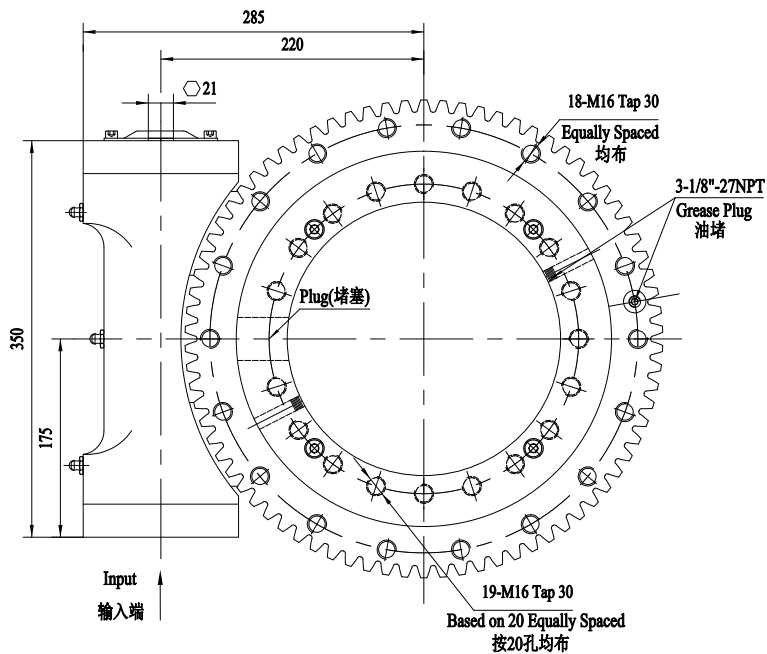

MOMENT LOAD CHART
 承载力矩图


INPUT

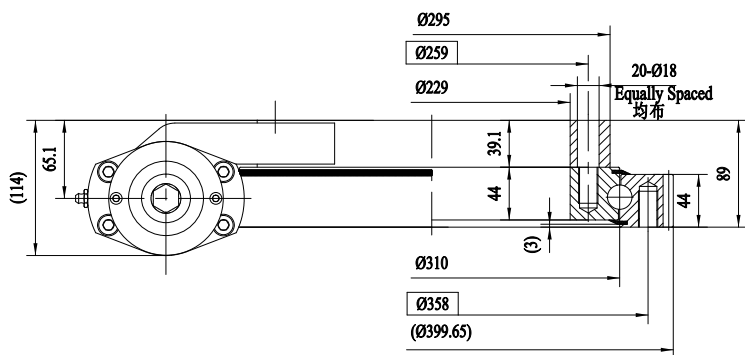


025

FRONT VIEW
正视图



TOP VIEW
俯视图

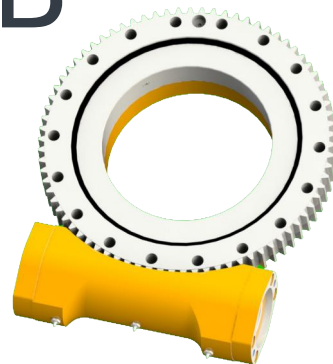


NOTICE: CUSTOMIZED ACCORDING TO REQUESTS
注意: 可根据客户要求进行定制化设计

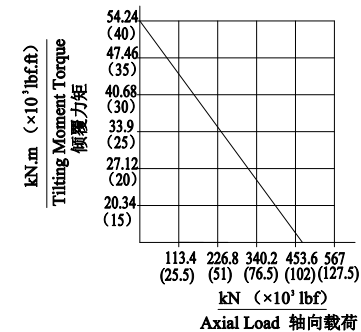
SLEWING DRIVE PERFORMANCE PARAMETERS
性能参数表

OUTPUT TORQUE	TILTING MOMENT TORQUE	HOLDING TORQUE	AXIAL LOAD	RADIAL LOAD	RATIO	BACKLASH	WEIGHT
输出转矩	倾覆力矩	保持力矩	轴向承载力	径向承载力	速比	精度	重量
7.5 KN.M	54.3 KN.M	45 KN.M	475 KN	190 KN	78:1	≤0.17°	45Kg
5532 LBF.FT	40*10 ³ LBF.FT	33.2*10 ³ LBF.FT	106.8*10 ³ LBF	42.7*10 ³ LBF			

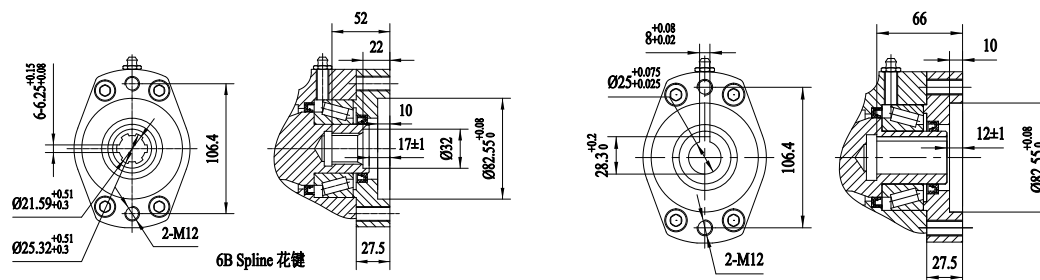
3D



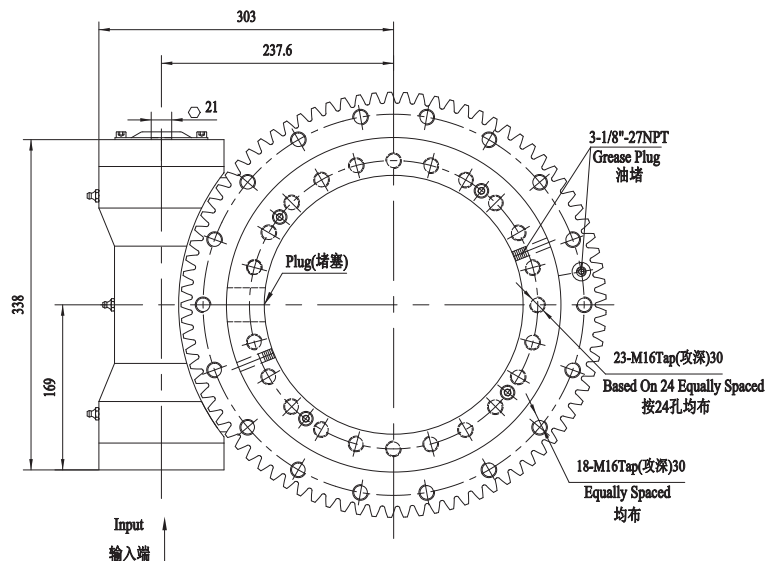
MOMENT LOAD CHART
承载力矩图



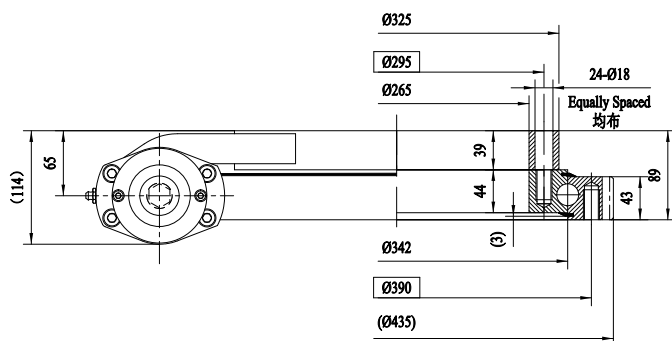
INPUT



FRONT VIEW
正视图



TOP VIEW
俯视图

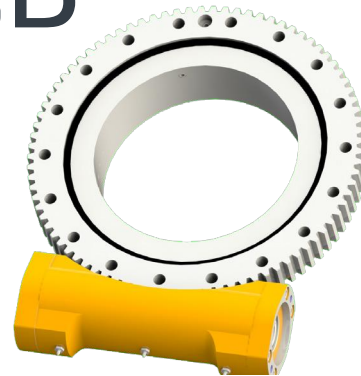


NOTICE: CUSTOMIZED ACCORDING TO REQUESTS
注意: 可根据客户要求进行定制化设计

SLEWING DRIVE PERFORMANCE PARAMETERS
性能参数表

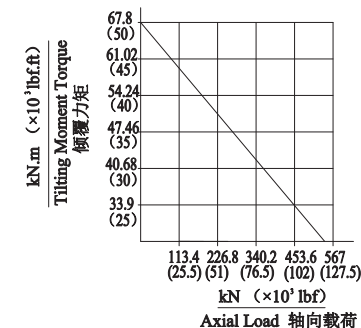
OUTPUT TORQUE	TILTING MOMENT TORQUE	HOLDING TORQUE	AXIAL LOAD	RADIAL LOAD	RATIO	BACKLASH	WEIGHT
输出转矩	倾覆力矩	保持力矩	轴向承载力	径向承载力	速比	精度	重量
8 KN.M	67.8 KN.M	49 KN.M	555 KN	222 KN	85:1	≤0.17°	55Kg
5900 LBF.FT	50*10 ³ LBF.FT	36*10 ³ LBF.FT	125*10 ³ LBF	50*10 ³ LBF			

3D

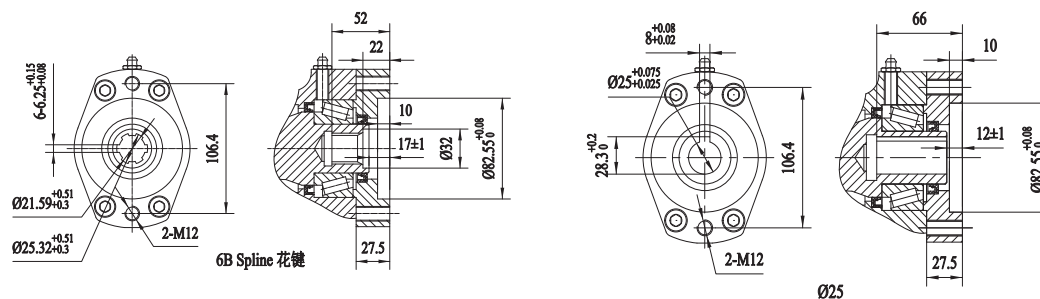


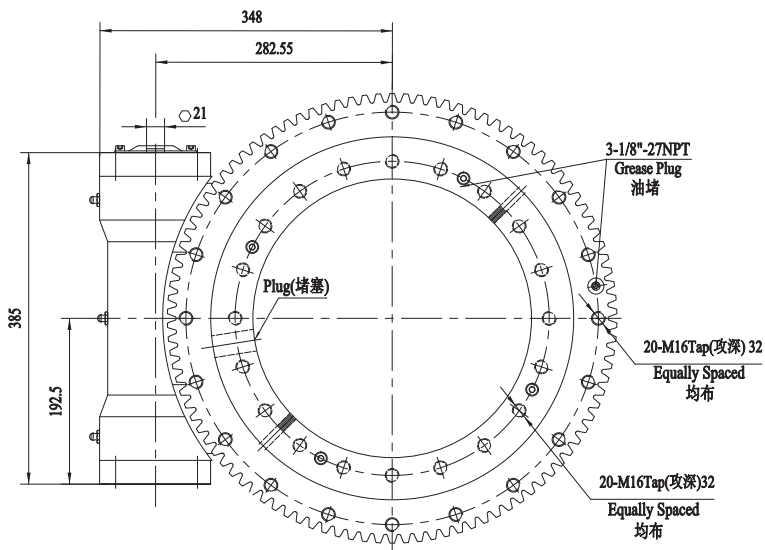
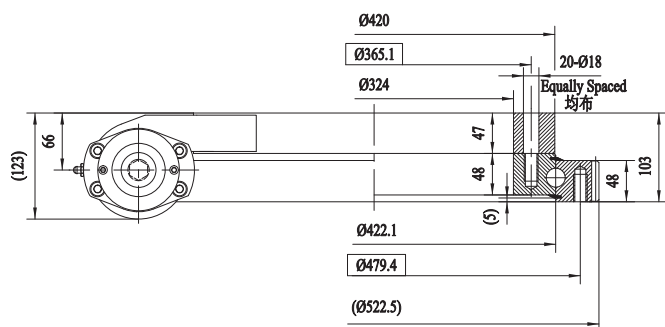
MOMENT LOAD CHART

承载力矩图



INPUT



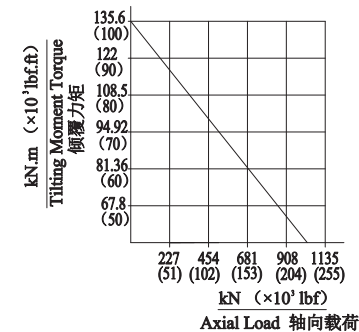
FRONT VIEW
正视图

TOP VIEW
俯视图


NOTICE: CUSTOMIZED ACCORDING TO REQUESTS
 注意: 可根据客户要求进行定制化设计

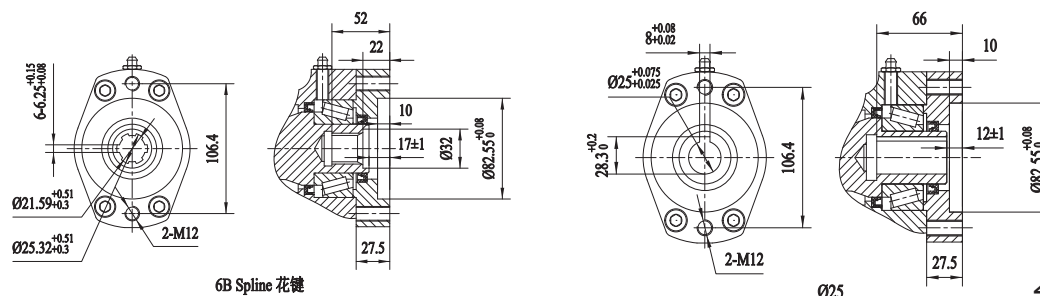
SLEWING DRIVE PERFORMANCE PARAMERERS
性能参数表

OUTPUT TORQUE	TILTING MOMENT TORQUE	HOLDING TORQUE	AXIAL LOAD	RADIAL LOAD	RATIO	BACKLASH	WEIGHT
输出转矩	倾覆力矩	保持力矩	轴向承载力	径向承载力	速比	精度	重量
10 KN.M	135.6 KN.M	73 KN.M	980 KN	400 KN	102:1	≤0.15°	85Kg
7400 LBF.FT	100*10 ³ LBF.FT	53.9*10 ³ LBF.FT	220*10 ³ LBF	89.9*10 ³ LBF			

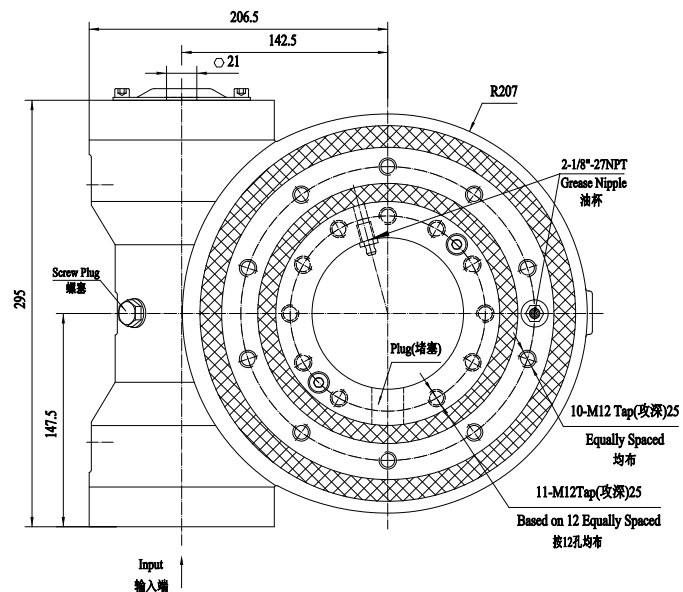
3D


MOMENT LOAD CHART
 承载力矩图


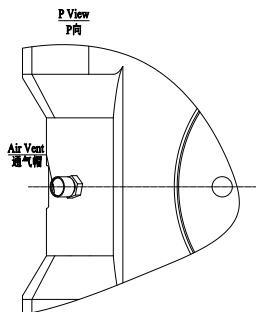
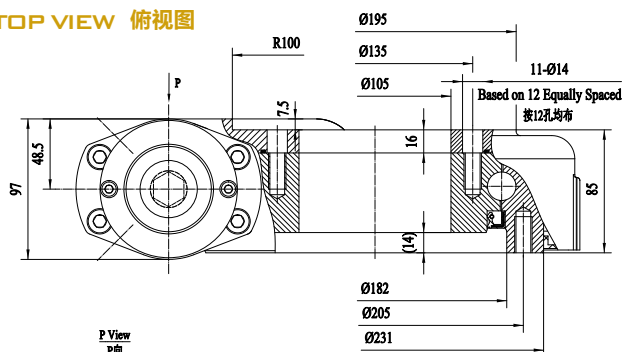
INPUT



FRONT VIEW 正视图



TOP VIEW 俯视图



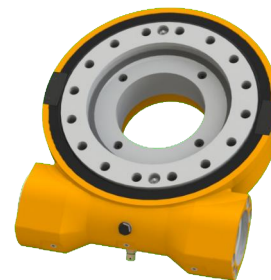
NOTICE: 注意:
CUSTOMIZED ACCORDING
TO REQUESTS
可根据客户要求
进行定制化设计

SLEWING DRIVE PERFORMANCE PARAMETERS

性能参数表

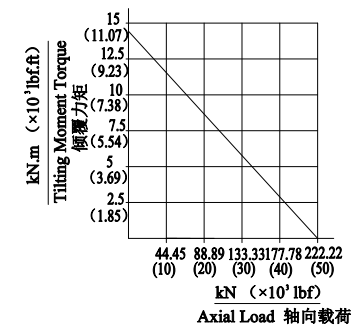
OUTPUT TORQUE	TILTING MOMENT TORQUE	HOLDING TORQUE	AXIAL LOAD	RADIAL LOAD	RATIO	BACKLASH	WEIGHT
输出转矩	倾覆力矩	保持力矩	轴向承载力	径向承载力	速比	精度	重量
3.5 KN.M	14.7 KN.M	20.6 KN.M	227 KN	93 KN	47:1	≤0.15°	35Kg
2583 LBF.FT	10.84*10 ³ LBF.FT	15.2*10 ³ LBF.FT	51*10 ³ LBF	20.9*10 ³ LBF			

3D

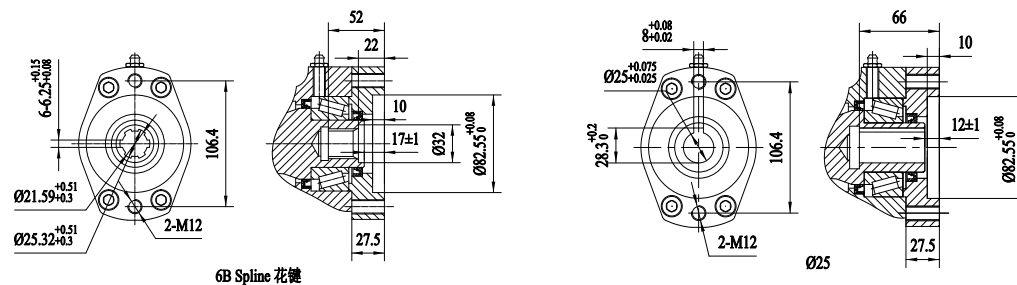


MOMENT LOAD CHART

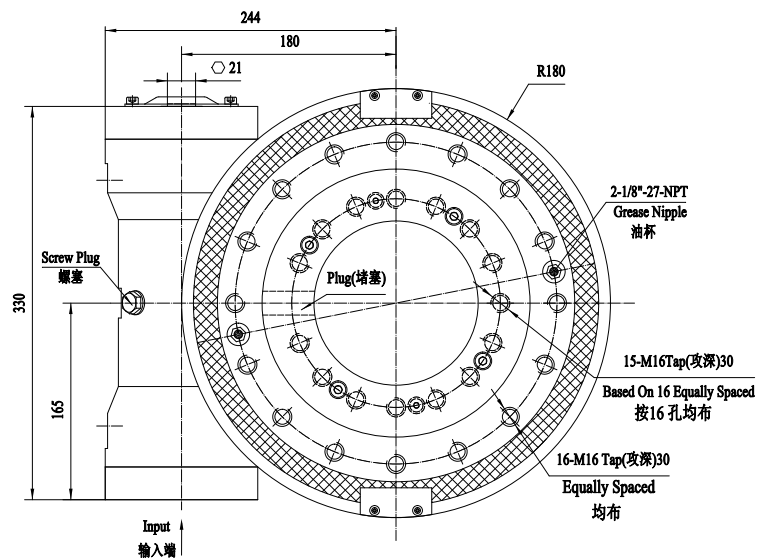
承载力矩图



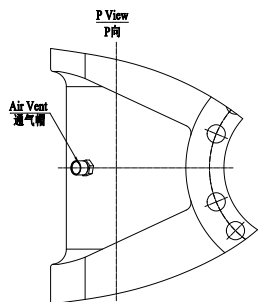
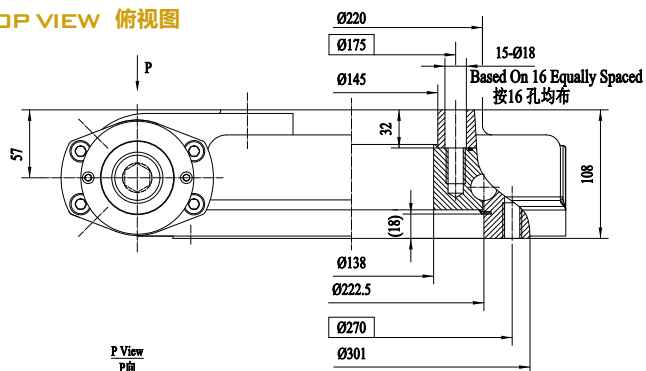
INPUT



FRONT VIEW 正视图



TOP VIEW 俯视图



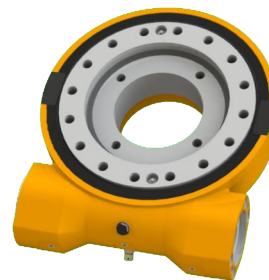
NOTICE: 注意:
 CUSTOMIZED ACCORDING
 TO REQUESTS
 可根据客户要求
 进行
 定制化设计

SLEWING DRIVE PERFORMANCE PARAMETERERS

性能参数表

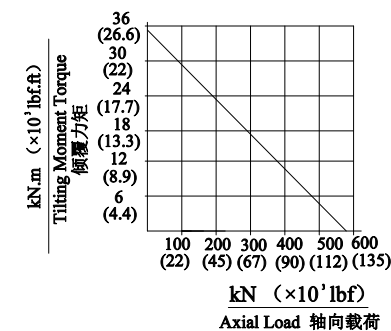
OUTPUT TORQUE	TILTING MOMENT TORQUE	HOLDING TORQUE	AXIAL LOAD	RADIAL LOAD	RATIO	BACKLASH	WEIGHT
输出转矩	倾覆力矩	保持力矩	轴向承载力	径向承载力	速比	精度	重量
9 KN.M	35.6 KN.M	39.8 KN.M	580 KN	220 KN	62:1	≤0.15°	48Kg
6642 LBF.FT	26.3*10 ³ LBF.FT	29.37*10 ³ LBF.FT	130.3*10 ³ LBF	49.4*10 ³ LBF			

3D

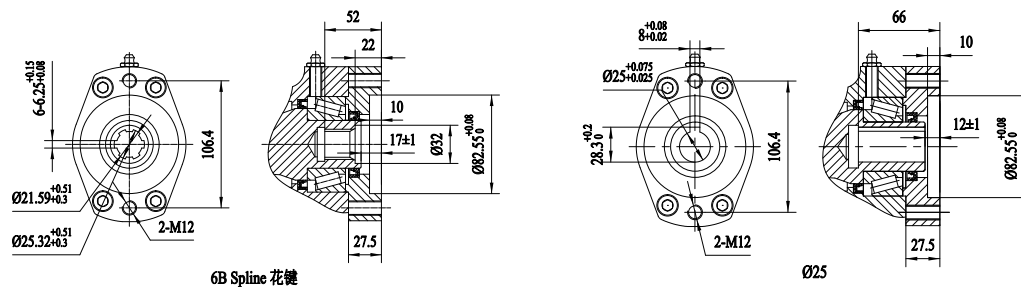


MOMENT LOAD CHART

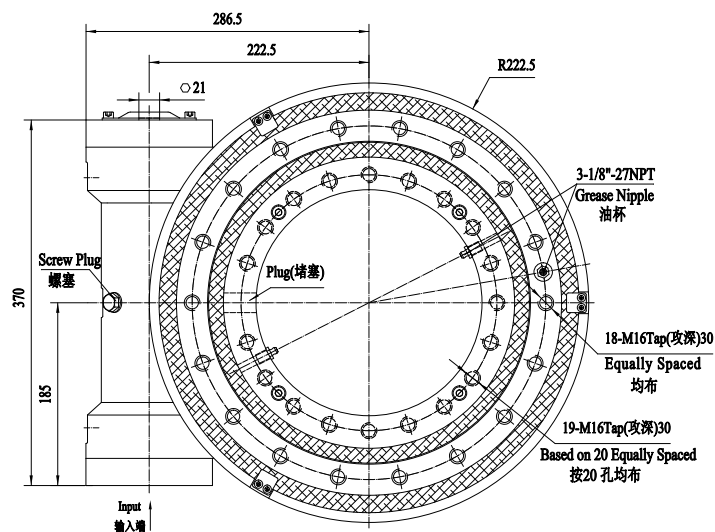
承载力矩图



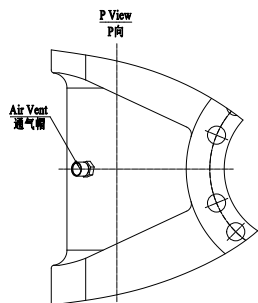
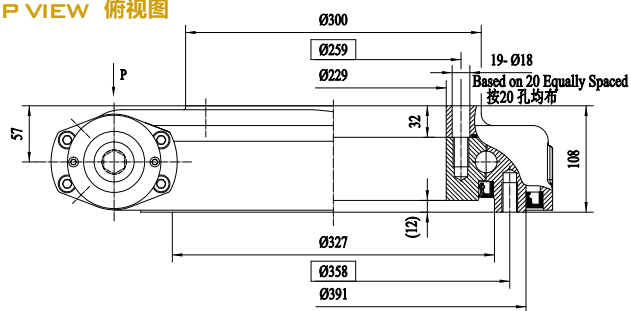
INPUT



FRONT VIEW 正视图



TOP VIEW 俯视图



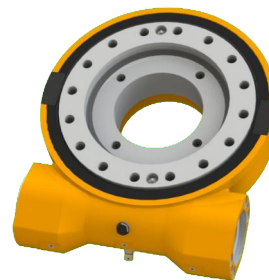
NOTICE: 注意:
CUSTOMIZED ACCORDING
TO REQUESTS
可根据客户要求
进行定制化设计

SLEWING DRIVE PERFORMANCE PARAMETERS

性能参数表

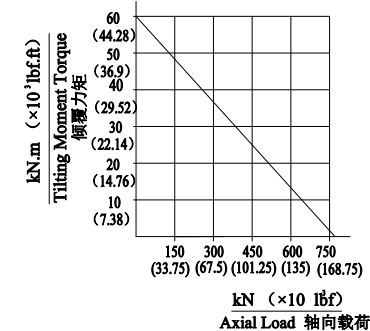
OUTPUT TORQUE	TILTING MOMENT TORQUE	HOLDING TORQUE	AXIAL LOAD	RADIAL LOAD	RATIO	BACKLASH	WEIGHT
输出转矩	倾覆力矩	保持力矩	轴向承载力	径向承载力	速比	精度	重量
9.5 KN.M	57 KN.M	44.3 KN.M	760 KN	280 KN	79:1	≤0.15°	60KG
7011 LBF.FT	42.1*10 ³ LBF.FT	32.7*10 ³ LBF.FT	171.1*10 ³ LBF	62.9*10 ³ LBF			

3D

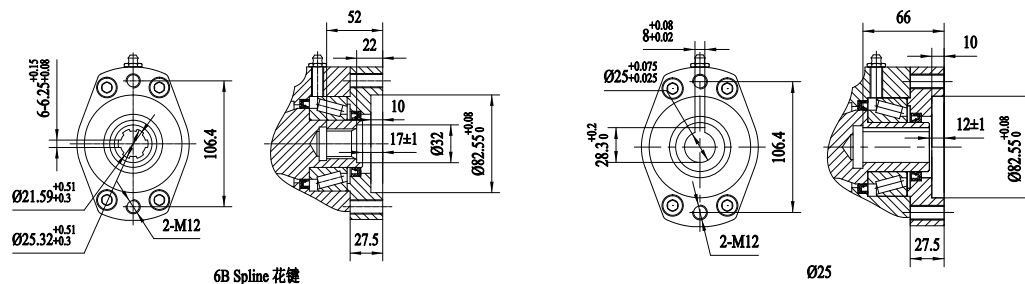


MOMENT LOAD CHART

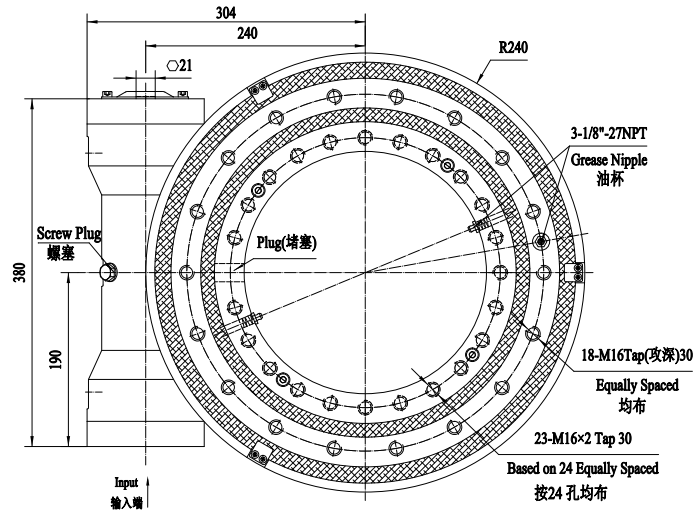
承载力矩图



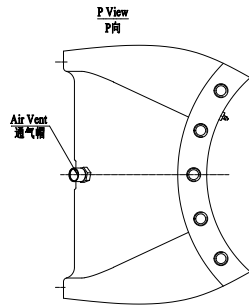
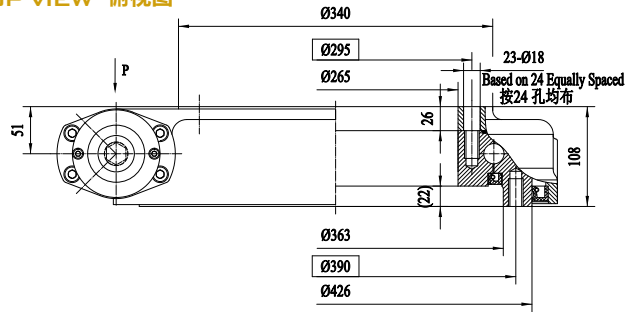
INPUT



FRONT VIEW 正视图



TOP VIEW 俯视图



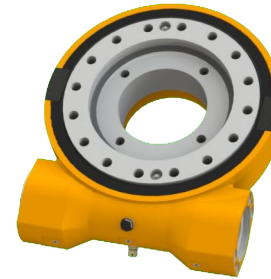
NOTICE: 注意:
CUSTOMIZED ACCORDING
TO REQUESTS
可根据客户要求
进行
定制化设计

SLEWING DRIVE PERFORMANCE PARAMERERS

性能参数表

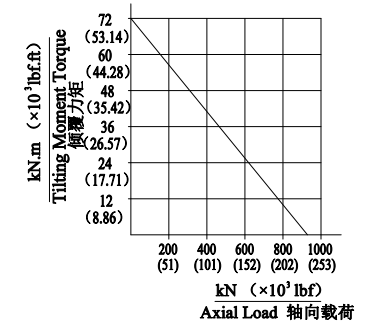
OUTPUT TORQUE	TILTING MOMENT TORQUE	HOLDING TORQUE	AXIAL LOAD	RADIAL LOAD	RATIO	BACKLASH	WEIGHT
输出转矩	倾覆力矩	保持力矩	轴向承载力	径向承载力	速比	精度	重量
10.8 KN.M	71.2 KN.M	49.5 KN.M	960 KN	360 KN	86:1	≤0.13°	67Kg
7970 LBF.FT	52.5*10 ³ LBF.FT	36.5*10 ³ LBF.FT	215.8*10 ³ LBF	80.9*10 ³ LBF			

3D

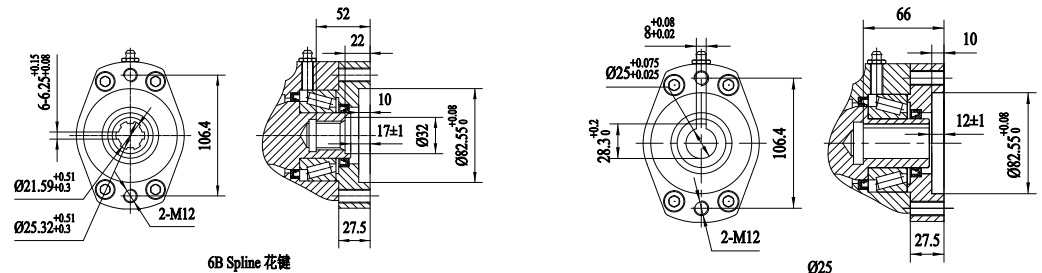


MOMENT LOAD CHART

承载力矩图



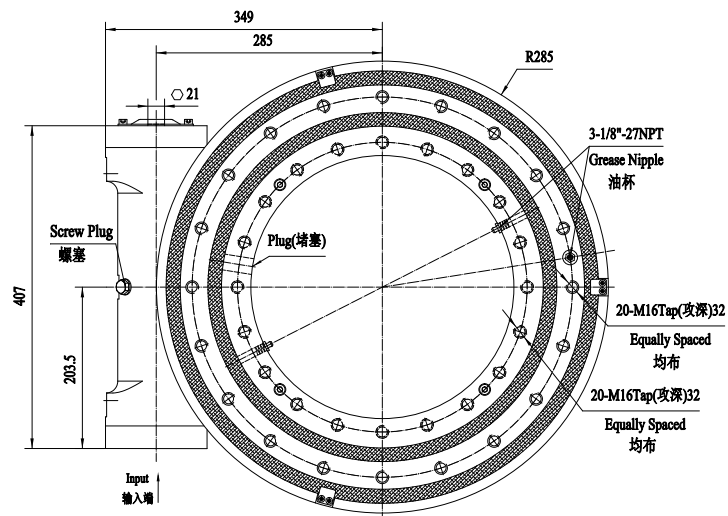
INPUT



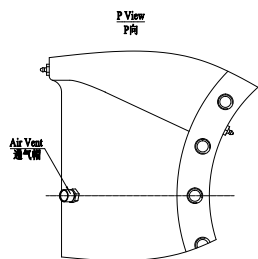
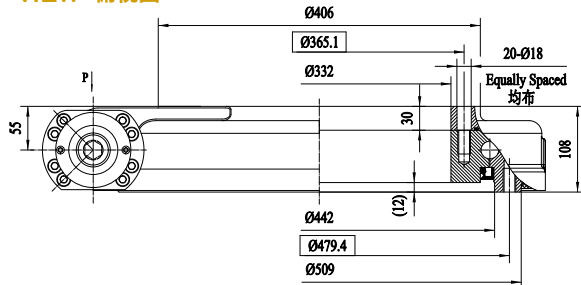
6B Spline 花键

Ø25

FRONT VIEW 正视图



TOP VIEW 俯视图



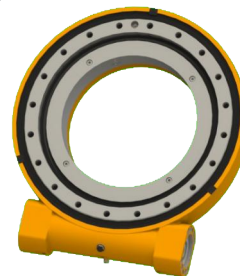
NOTICE: 注意:
CUSTOMIZED ACCORDING
TO REQUESTS
可根据客户要求
进行定制化设计

SLEWING DRIVE PERFORMANCE PARAMETERS

性能参数表

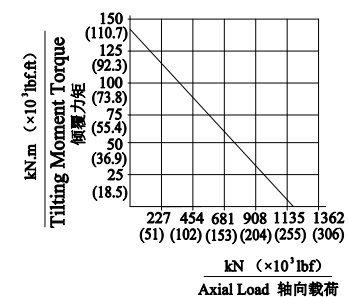
OUTPUT TORQUE	TILTING MOMENT TORQUE	HOLDING TORQUE	AXIAL LOAD	RADIAL LOAD	RATIO	BACKLASH	WEIGHT
输出转矩	倾覆力矩	保持力矩	轴向承载力	径向承载力	速比	精度	重量
12.96 KN.M	142.4 KN.M	74 KN.M	1166 KN	435 KN	104:1	≤0.1°	89Kg
9564 LBF.FT	105.1*10 ³ LBF.FT	54.6*10 ³ LBF.FT	262*10 ³ LBF	97.8*10 ³ LBF			

3D

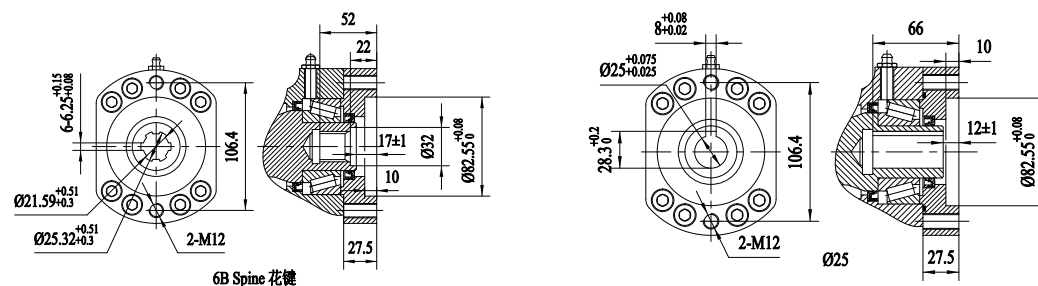


MOMENT LOAD CHART

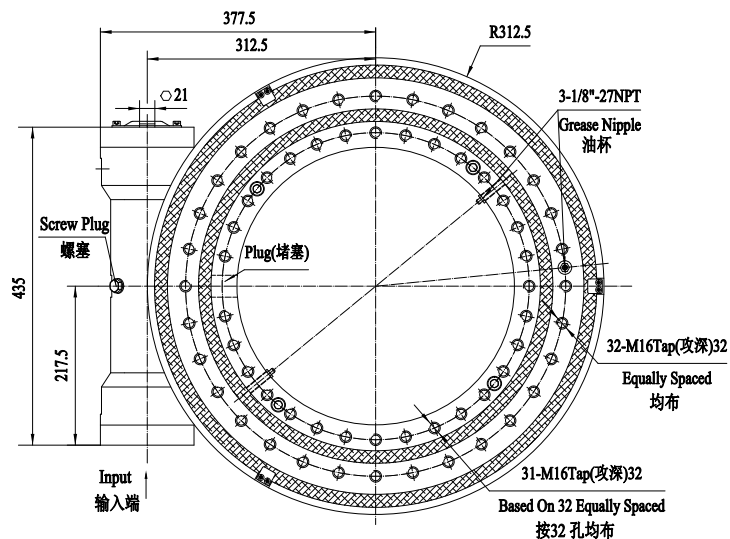
承载力矩图



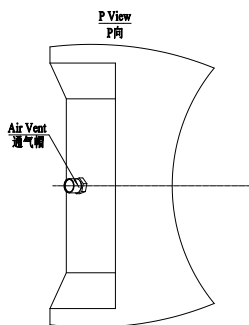
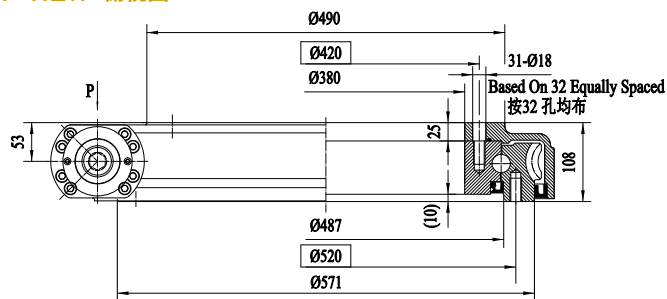
INPUT



FRONT VIEW 正视图



TOP VIEW 俯视图



NOTICE: 注意:
CUSTOMIZED ACCORDING
TO REQUESTS
可根据客户要求
进行定制化设计

SLEWING DRIVE PERFORMANCE PARAMERERS

性能参数表

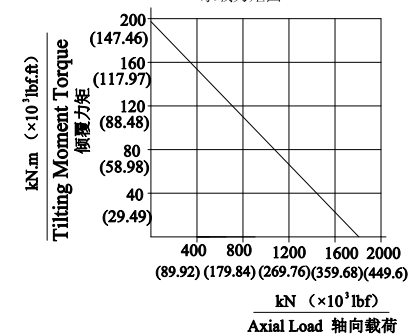
OUTPUT TORQUE	TILTING MOMENT TORQUE	HOLDING TORQUE	AXIAL LOAD	RADIAL LOAD	RATIO	BACKLASH	WEIGHT
输出转矩	倾覆力矩	保持力矩	轴向承载力	径向承载力	速比	精度	重量
18.5 KN.M	196 KN.M	82 KN.M	1810 KN	675 KN	94:1	≤0.1°	115Kg
13640 LBF.FT	144.5*10 ³ LBF.FT	60.5*10 ³ LBF.FT	406*10 ³ LBF	151.74*10 ³ LBF			

3D

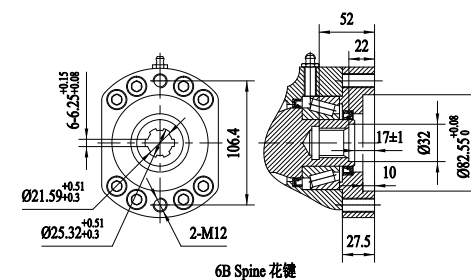
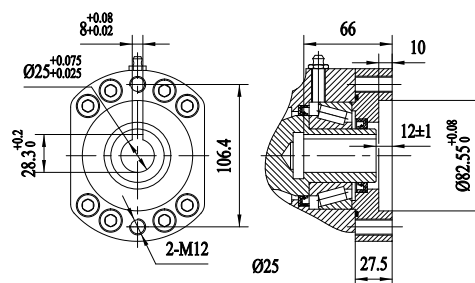


MOMENT LOAD CHART

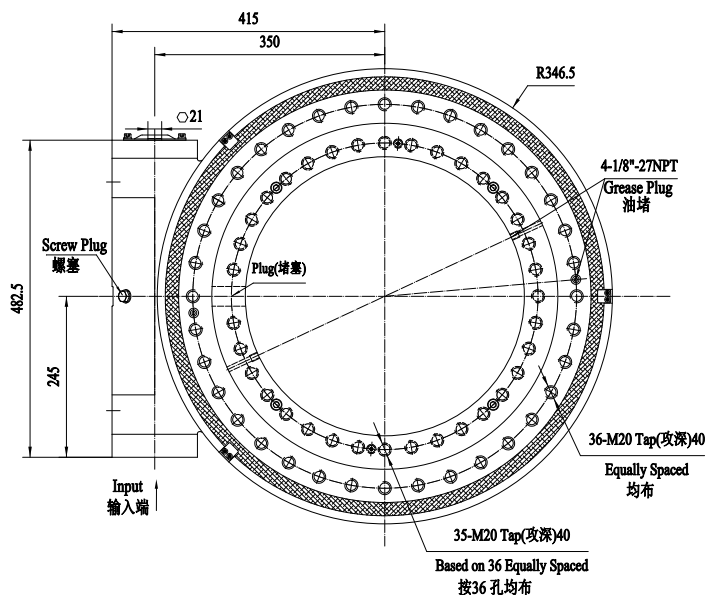
承载力矩图



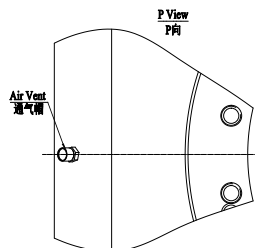
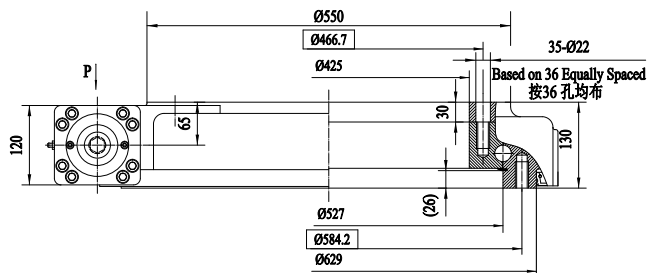
INPUT



FRONT VIEW 正视图



TOP VIEW 俯视图



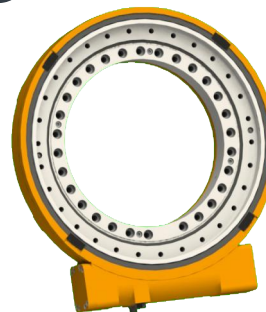
NOTICE: 注意:
CUSTOMIZED ACCORDING
TO REQUESTS
可根据客户要求
进行
定制化设计

SLEWING DRIVE PERFORMANCE PARAMERERS

性能参数表

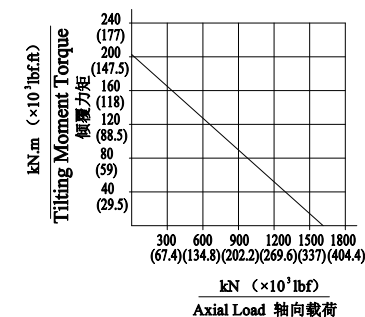
OUTPUT TORQUE	TILTING MOMENT TORQUE	HOLDING TORQUE	AXIAL LOAD	RADIAL LOAD	RATIO	BACKLASH	WEIGHT
输出转矩	倾覆力矩	保持力矩	轴向承载力	径向承载力	速比	精度	重量
28.7 KN.M	203 KN.M	107 KN.M	1600 KN	650 KN	90:1	≤0.1°	169Kg
21180 LBF.FT	150*10 ³ LBF.FT	78.9*10 ³ LBF.FT	359.7*10 ³ LBF	146*10 ³ LBF			

3D

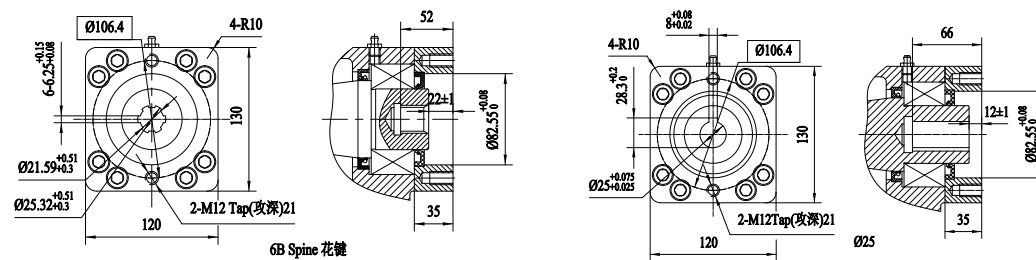


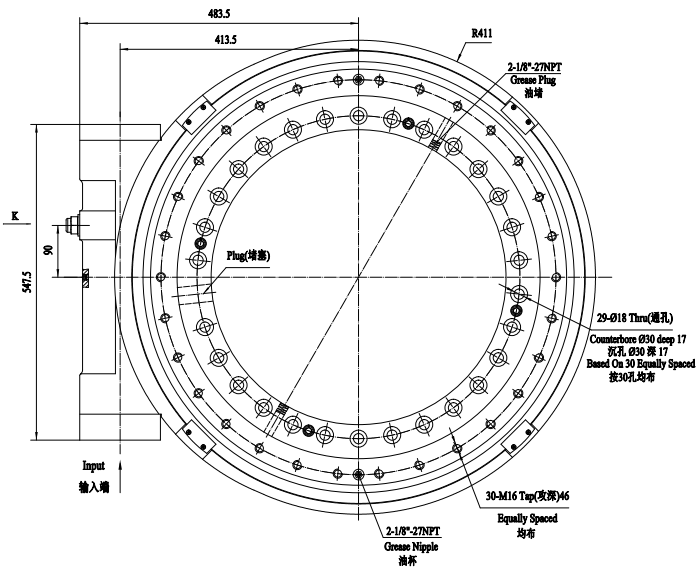
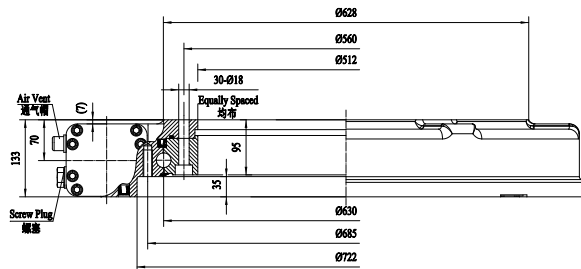
MOMENT LOAD CHART

承载力矩图



INPUT



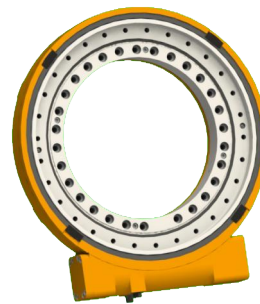
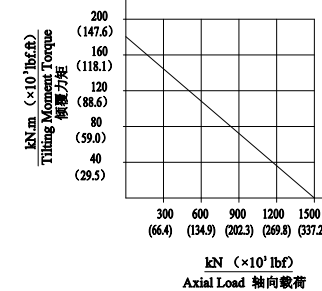
FRONT VIEW
 正视图

TOP VIEW
 俯视图


NOTICE: CUSTOMIZED ACCORDING TO REQUESTS
 注意: 可根据客户要求进行定制化设计

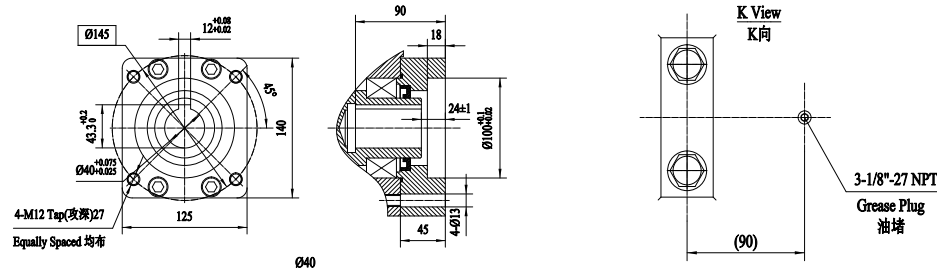
SLEWING DRIVE PERFORMANCE PARAMERERS
 性能参数表

OUTPUT TORQUE	TILTING MOMENT TORQUE	AXIAL LOAD	RATIO	BACKLASH	WEIGHT
输出转矩	倾覆力矩	轴向承载力	速比	精度	重量
30 KN.M	180 KN.M	1500 KN	94:1	≤0.15°	250Kg
22140 LBF.FT	132*10 ³ LBF.FT	330*10 ³ LBF			

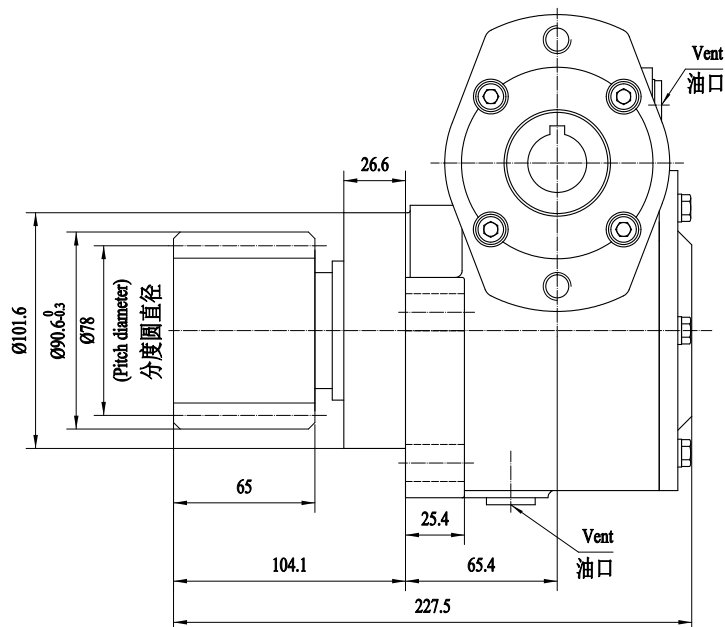
3D


MOMENT LOAD CHART
 承载力矩图


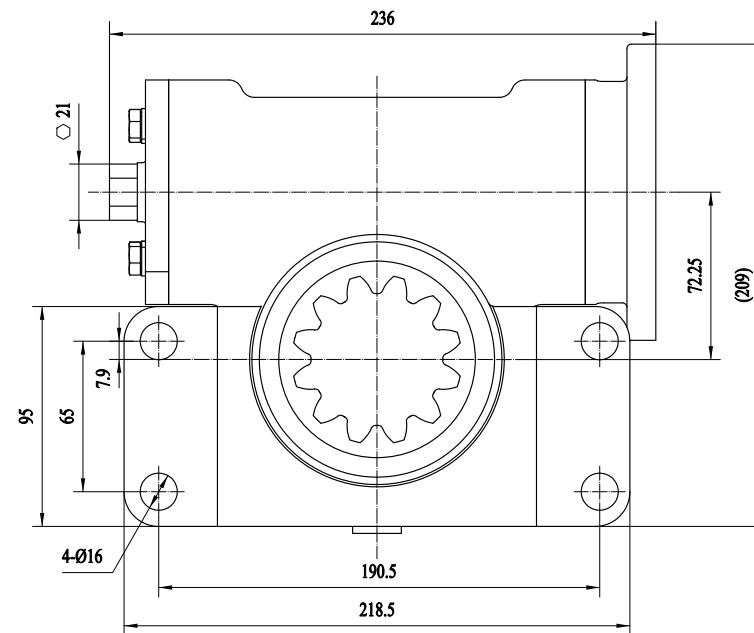
INPUT



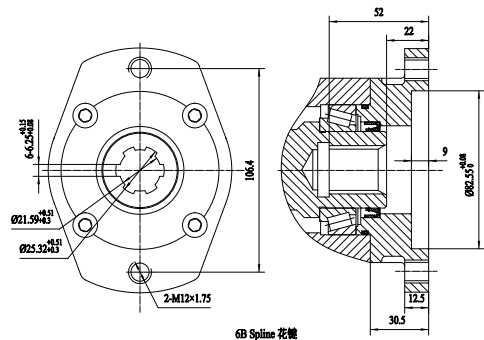
NOTICE: CUSTOMIZED ACCORDING TO REQUESTS
注意: 可根据客户要求进行定制化设计



FRONT VIEW
正视图



LEFT VIEW
左视图



6B Spine 花键

3D

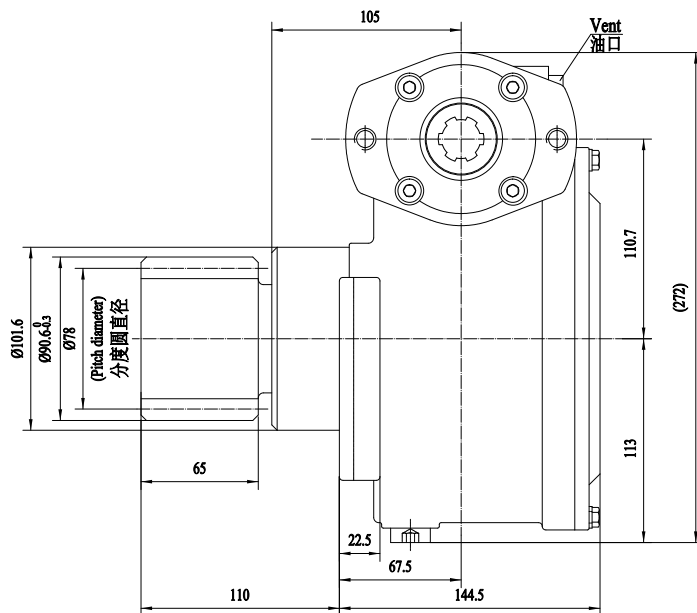


SLEWING DRIVE PERFORMANCE PARAMETERS

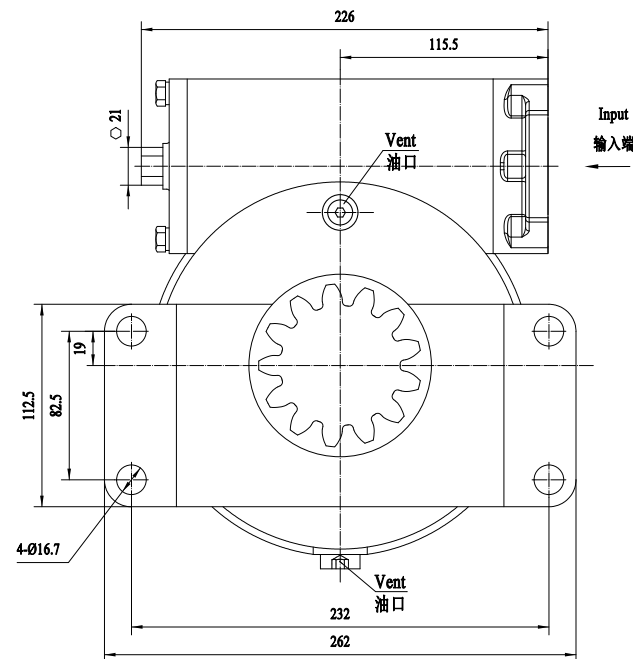
性能参数表

OUTPUT TORQUE(MAX.)	GEAR RATIO	WEIGHT
最大输出转矩	速比	重量
900 N.M	30:1	23KG
664 LBF.FT		

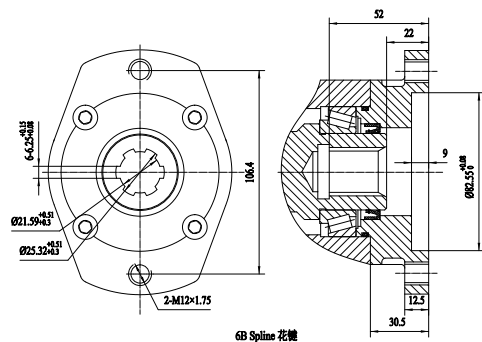
NOTICE: CUSTOMIZED ACCORDING TO REQUESTS
注意: 可根据客户要求进行定制化设计



FRONT VIEW
正视图



LEFT VIEW
左视图



3D

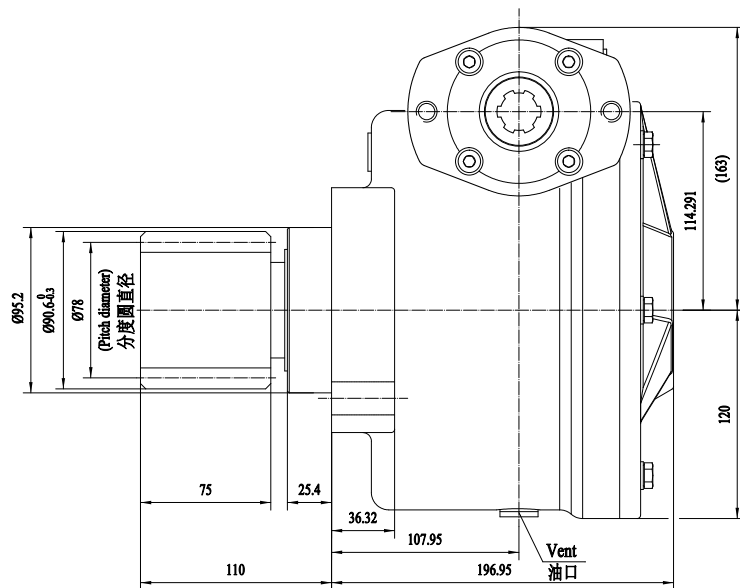


SLEWING DRIVE PERFORMANCE PARAMETERS

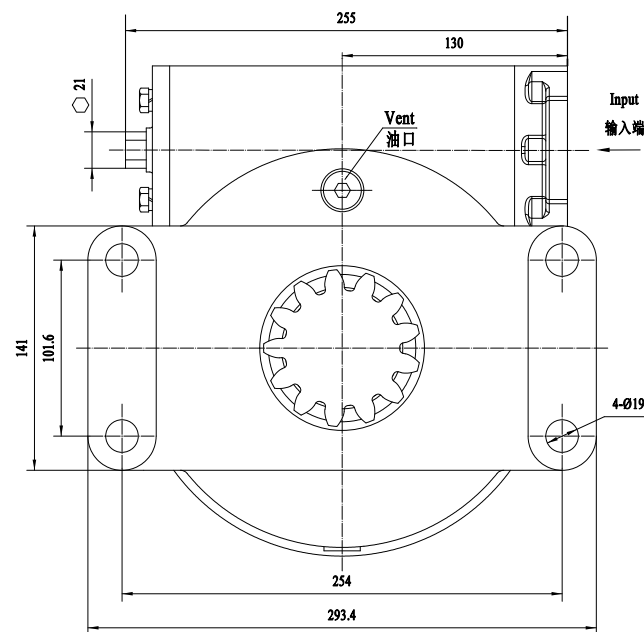
性能参数表

OUTPUT TORQUE(MAX.)	GEAR RATIO	WEIGHT
最大输出转矩	速比	重量
1600 N.M	39:1	26KG
1180 LBF.FT		

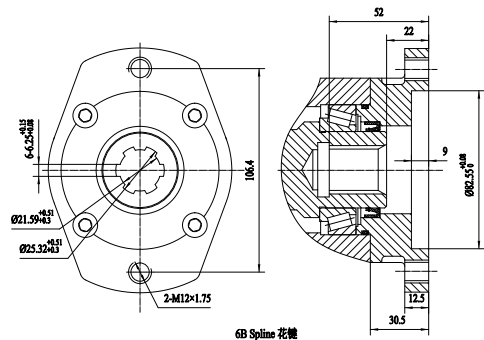
NOTICE: CUSTOMIZED ACCORDING TO REQUESTS
注意: 可根据客户要求进行定制化设计



FRONT VIEW
正视图



LEFT VIEW
左视图



3D



SLEWING DRIVE PERFORMANCE PARAMETERS

性能参数表

OUTPUT TORQUE(MAX.)	GEAR RATIO	WEIGHT
最大输出转矩	速比	重量
2823 N.M	44:1	30KG
2083 LBF.FT		

CALCULATION FOR SLEWING RING

回转支承选型计算



CALCULATION FOR SINGLE-ROW BALL SLEWING RING

单排球式回转支承的选型计算

1_CAPACITY OF BEARING 计算额定静容量

$$C_0 = F \cdot D \cdot D$$

C_0 ___ CAPACITY OF BEARING, KN
(额定静容量)

F ___ CAPACITY FACTOR, 0.108KN/MM²
(静容量系数)

D ___ DIAMETER OF TRACK CENTER, MM
(滚道中心直径)

D ___ DIAMETER OF BALL, MM
(钢球公称直径)

2_LOADING CALCULATION

根据组合后的外载荷, 计算当量轴向载荷

$$C_P = F_A + 4370M/D + 3.44F_R$$

C_P ___ LOADING CALCULATION, KN
(当量轴向载荷)

M ___ TOPPLING MOVEMENT, KN·M
(倾覆力矩)

F_A ___ AXIAL FORCE, KN
(轴向力)

F_R ___ RADIAL FORCE, KN
(径向力)

3_SAFETY FACTOR CALCULATION 计算安全系数

$$F_s = C_0 / C_P$$

SEE THE FOLLOWING TABLE

CALCULATION FOR THREE-ROW-ROLLER SLEWING RING BEARING

三排滚柱式回转支承的选型计算

1_CAPACITY OF BEARING 计算额定静容量

$$C_0 = F \cdot D \cdot D$$

C_0 ___ CAPACITY OF BEARING, N
(额定静容量)

F ___ CAPACITY FACTOR, 0.172KN/MM²
(容量系数)

D ___ DIAMETER OF TRACK CENTER, MM
(滚道中心直径)

D ___ UPPER ROW ROLLER DIAMETER, MM
(上排滚柱直径)

2_LOADING CALCULATION

根据组合后的外载荷, 计算当量轴向载荷

$$C_P = F_A + 4500M/D$$

C_P ___ LOADING CALCULATION, KN
(当量轴向载荷)

M ___ TOPPLING MOVEMENT, KN·M
(倾覆力矩)

F_A ___ AXIAL FORCE, KN
(轴向力)

3_SAFETY FACTOR CALCULATION 计算安全系数

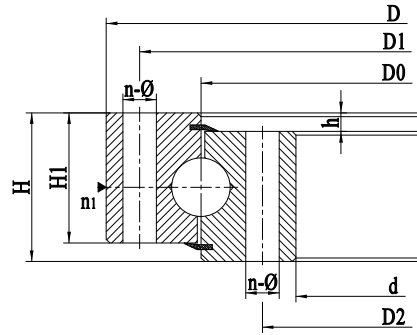
$$F_s = C_0 / C_P$$

SEE THE FOLLOWING TABLE

TYPE OF WORK 工作类型	WORK CHARACTERISTICS 工作特性	MACHINERY FOR 机械举例	f_s
LIGHT DUTY 轻型	NOT OFTEN FULL LOAD, STEADY ROTATION AND SMALL IMPACT 不经常满负荷, 回转平稳冲击小	STACKER AND RECLAIMER, TRUCK CRANE, NON-PORT WHEELED CRANE 堆取料机, 汽车起重机, 非港口用轮式起重机	1.00~1.15
MIDDLE DUTY 中型	NOT ALWAYS FULL LOAD, TURN FAST, HAVE IMPACT 不经常满负荷, 回转较快, 有冲击	TOWER CRANE, MARINE CRANE CRAWLER CRANE 塔式起重机, 船用起重机履带起重机	1.15~1.30
HEAVY DUTY 重型	OFTEN FULL LOAD, FAST ROTATION IMPACT 经常满负荷, 回转快冲击大	GRAB CRANE, PORT CRANE, SINGLE BUCKET EXCAVATOR, CONTAINER CRANE 抓斗起重机, 港口起重机, 单斗挖掘机, 集装箱起重机	1.30~1.45
EXTREMELY HEAVY DUTY 特重型	FULL LOAD, HIGH IMPACT OR POOR WORKPLACE CONDITIONS 满负荷, 冲击大或工作场所条件恶劣	BUCKET EXCAVATOR, TUNNEL BORING MACHINE, METALLURGICAL CRANE, OFFSHORE PLATFORM CRANE 斗轮式挖掘机, 隧道掘进机, 冶金起重机, 海上作业平台起重机	1.45~1.70



**NO
TEETH**



VERSATILE BEARING SOLUTIONS FEATURING EXTERNAL, INTERNAL, AND ABSENT TEETH OPTIONS EQUIPPED TO SUIT EVERY SLEWING APPLICATION.

- SEVERAL MATERIAL OPTIONS WITH DESIGN FLEXIBILITY AND CUSTOMIZATION OPTIONS.

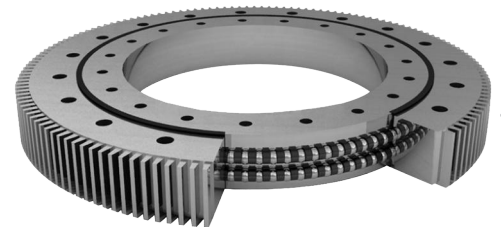
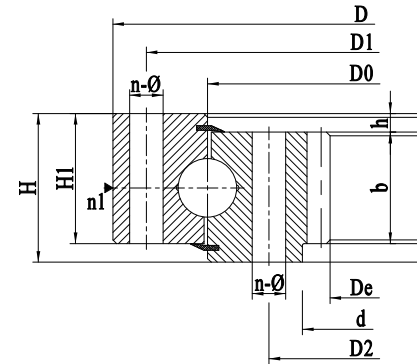
- STANDARD SEALING AND GREASE FILL

- 4-POINT CONTACT BEARINGS

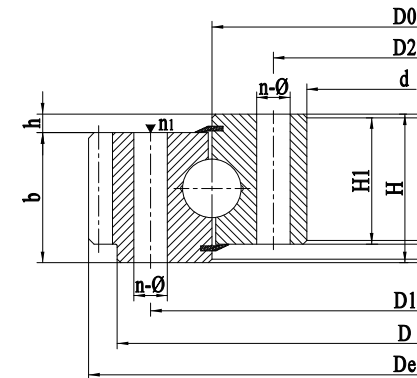
- 28 DISTINCT SIZES, UP TO 39" BEARING DIAMETER



**INNER
TEETH**



**OUTER
TEETH**



SINGLE-ROW BALL SLEWING RING (STANDARD SERIES 01)

单排球式回转支承 (01 系列)



NUMBER OF SLEWING RING

编码方法

1_STANDARD SERIES 01 01 系列



A:——TYPE OF SLEWING RING 回转支承结构型式代号

01:SINGLE-ROW BALL 单排球式

B:——CODE OF GEAR DRIVEN TYPE 传动型式代号

0:NO TEETH 无齿式

1:NORMAL, OUTER GEAR 小模数外齿式

2:BIGGER MODULE, INNER GEAR 大模数外齿式

3NORMAL INNER GEAR 小模数内齿式

4BIGGER MODULE, INNER GEAR 大模数内齿式

C:——DIA.OF ROLLER BALL MM 滚动体直径

D:——MM DIA.OF TRACK CENTER 滚道中心直径

E:——CODE OF INSTALLATION FITTINGTYPE

安装配合型式代号

0:NO FITTING CIRCLE 标准型无止口

1:WITH FITTING CIRCLE 标准型有止口

2: SPECIAL TYPE 特殊型

F:——CODE OF INSTALLATION HOLE TYPE

安装孔型式代号

0:BOTH RINGS WITH INSTALLATION BOLT HOLES

内、外圈安装孔均为通孔

1:BOTH RINGS WITH INSTALLATION SCREW HOLES

内外圈安装孔均为螺孔

2:OUTER RING WITH INSTALLATION BOLT HOLES, INNER RING WITH INSTALLATION SCREW HOLES

外圈安装孔为通孔, 内圈为螺孔

3:OUTER RING WITH INSTALLATION SCREW HOLES, INNER RING WITH INSTALLATION BOLT HOLES

外圈安装孔为螺孔, 内圈为通孔

FOR EXAMPLE

SINGLE-ROW BALL, BIGGER MODULE, INNER GEAR,

DIA.OF BALL 40MM, DIA.OF TRACK CENTER

1120MM, WITH FITTING CIRCLE. BOTH RINGS WITH

INSTALLATION BOLT HOLES REFER TO THE

FOLLOWING:

SLEWING RING 014.40.1120.10

型号标记示例:

单排球式。大模数内齿, 滚动体直径 40mm, 滚道中心直径 1120mm, 标准型有止口, 内外圈安装孔, 均为通孔连接, 产品型号标记如下:

回转支承 014.40.1120.10

NO. 序号	TYPE 型号			CONFIGURATION & STRUCTURAL DIMENSION 外形及结构尺寸								MOUNTING HOLE DIMENSION 安装孔尺寸						GEAR PARAMETER 齿轮参数						
	010	011.012	013.014	D	d	H	H1	h	D3	d1	n1	D1	D2	n	TYPE □ o型		TYPE 1.2.3 1.2.3型		b	m	011(012)		013(014)	
															φ	M	T	z			da	z	da	
STEEL BALL SPEC.DL (钢球规格, DL)																								
1	010.20.200	011.20.200	/	280	120	60	50	10	201	199	2	248	152	12	φ16	M14	28	40	3	98	300	/	/	
2	010.20.224	011.20.224	/	304	144	60	50	10	225	223	2	272	176	12	φ16	M14	28	40	3	105	321	/	/	
3	010.20.250	011.20.250	/	330	170	60	50	10	251	249	2	298	202	18	φ16	M14	28	40	4	86	352	/	/	
4	010.22.280	011.22.280	/	360	200	60	50	10	281	279	2	328	232	18	φ16	M14	28	40	4	94	384	/	/	
5	010.25.315	011.25.315	013.25.315	408	222	70	60	10	316	314	2	372	258	20	φ18	M16	32	50	5	85	435	40	190	
6	010.25.355	011.25.355	013.25.355	448	262	70	60	10	356	354	2	412	298	20	φ18	M16	32	50	5	93	475	49	235	
7	010.25.400	011.25.400	013.25.400	493	307	70	60	10	401	399	2	457	343	24	φ18	M16	32	50	6	86	528	48	276	
8	010.25.450	011.25.450	013.25.450	543	357	70	60	10	451	449	2	507	393	24	φ18	M16	32	50	6	94	576	56	324	
9	010.30(25).500	011.30(25).500	013.30(25).500	602	398	80	70	10	501	498	4	566	434	20	φ18	M16	32	60	5	123	629	74	367	
		012.30(25).500	014.30(25).500																6	102	628.8	62	368.4	
10	010.30(25).560	011.30(25).560	013.30(25).560	662	458	80	70	10	561	558	4	626	494	20	φ18	M16	32	60	5	135	689	86	427	
		012.30(25).560	014.30(25).560																6	112	688.8	72	428.4	
11	010.30(25).630	011.30(25).630	013.30(25).630	732	528	80	70	10	631	628	4	696	564	24	φ18	M16	32	60	6	126	772.8	83	494.4	
		012.30(25).630	014.30(25).630																8	94	774.4	62	491.2	
12	010.30(25).710	011.30(25).710	013.30(25).710	812	608	80	70	10	711	708	4	776	644	24	φ18	M16	32	60	6	139	850.8	96	572.4	
		012.30(25).710	014.30(25).710																8	104	854.4	72	571.2	
13	010.40(30).800	011.40(30).800	013.40(30).800	922	678	100	90	10	801	798	6	878	722	30	φ24	M20	40	80	8	118	966.4	80	635.2	
		012.40(30).800	014.40(30).800																10	94	968	64	634	

NO. 序号	TYPE 型号			CONFIGURATION & STRUCTURAL DIMENSION 外形及结构尺寸									MOUNTING HOLE DIMENSION 安装孔尺寸					GEAR PARAMETER 齿轮参数					
	010	011.012	013.014	D	d	H	H1	h	D3	d1	n1	D1	D2	n	TYPE □ ○型		b	m	011(012)		013(014)		
															φ	M			T	z	da	z	da
	STEEL BALL SPEC.DL (钢球规格, DL)																						
14	010.40(30).900	011.40(30).900	013.40(30).900	1022	778	100	90	10	901	898	6	978	822	30	φ22	M20	40	80	8	130	1062.4	93	739.2
		012.40(30).900	014.40(30).900																10	104	1068	74	734
15	010.40(30).1000	011.40(30).1000	013.40(30).1000	1122	878	100	90	10	1001	998	6	1078	922	36	φ22	M20	40	80	10	116	1188	83	824
		012.40(30).1000	014.40(30).1000																12	96	1185.6	69	820.8
16	010.40(30).1120	011.40(30).1120	013.40(30).1120	1242	998	100	90	10	1121	1118	6	1198	1042	36	φ22	M20	40	80	10	127	1298	95	944
		012.40(30).1120	014.40(30).1120																12	106	1305.6	79	940.8
17	010.45(35).1250	011.45(35).1250	013.45(35).1250	1390	1110	110	100	10	1252	1248	5	1337	1163	40	φ26	M24	48	90	12	118	1449.6	88	1048.8
		012.45(35).1250	014.45(35).1250																14	101	1453.2	75	1041.6
18	010.45(35).1400	011.45(35).1400	013.45(35).1400	1540	1250	110	100	10	1402	1398	5	1487	1313	40	φ26	M24	48	90	12	131	1605.6	100	1192.8
		012.45(35).1400	014.45(35).1400																14	112	1607.2	86	1195.6
19	010.45(35).1600	011.45(35).1600	013.45(35).1600	1740	1460	110	100	10	1602	1598	5	1687	1513	45	φ26	M24	48	90	14	127	1817.2	100	1391.6
		012.45(35).1600	014.45(35).1600																16	111	1820.8	87	1382.4
20	010.45(35).1800	011.45(35).1800	013.45(35).1800	1940	1660	110	100	10	1802	1798	5	1887	1713	45	φ26	M24	48	90	14	141	2013.2	113	1573.6
		012.45(35).1800	014.45(35).1800																16	123	2012.8	99	1574.4
21	010.60(40).2000	011.60(40).2000	013.60(40).2000	2178	1825	144	132	12	2002	1998	8	2110	1891	48	φ33	M30	60	120	16	139	2258.8	109	1734.4
		012.60(40).2000	014.60(40).2000																18	123	2264.4	97	1735.2

	NO. 序号	BASIC SIZE 基本型号	CONFIGURATION SIZE 外形尺寸			MOUNTING SIZE 安装尺寸							STRUCTURAL SIZE 结构尺寸						GEAR DATA 齿轮参数				WEIGHT Kg 参考重量
			Da	Di	H	La	Li	na	B/M	ni	B/M	t	nl	h	A	C	Hu	Ho	m	z	k	b	
			mm			mm			mm		mm	mm	mm						mm				
NO TEETH 无 齿 式	1	LU414.20	518	304	56	490	332	8	18	12	18	-	4	12	453	375	10	10	-	-	-	-	24
	2	LU544.20	648	434	56	620	462	10	18	14	18	-	4	12	583	505	10	10	-	-	-	-	31
	3	LU644.20	748	534	56	720	562	12	18	16	18	-	4	12	683	605	10	10	-	-	-	-	37
	4	LU744.20	848	634	56	820	662	12	18	16	18	-	4	12	783	705	10	10	-	-	-	-	43
	5	LU844.20	948	734	56	920	762	14	18	18	18	-	4	12	883	805	10	10	-	-	-	-	48
	6	LU944.20	1048	834	56	1020	862	16	18	20	18	-	4	12	983	905	10	10	-	-	-	-	53
	7	LU1094.20	1198	984	56	1170	1012	16	18	20	18	-	4	12	1133	1055	10	10	-	-	-	-	62
	8	LU955.32	1100	805	90	1060	845	30	22	30	22	-	6	21	1017	893	19	19	-	-	-	-	131
	9	LU1055.32	1200	905	90	1160	945	30	22	30	22	-	6	21	1117	993	19	19	-	-	-	-	145
	10	LU1155.32	1300	1005	90	1260	1045	36	22	36	22	-	6	21	1217	1093	19	19	-	-	-	-	159
	11	LU1255.32	1400	1105	90	1360	1145	42	22	42	22	-	6	21	1317	1193	19	19	-	-	-	-	172
	12	LU1355.32	1500	1205	90	1460	1245	42	22	42	22	-	6	21	1417	1293	19	19	-	-	-	-	186
	13	LU1455.32	1600	1305	90	1560	1345	48	22	48	22	-	6	21	1517	1393	19	19	-	-	-	-	200
OUTER TEETH 外 齿 式	1	LW414.20	504	304	56	455	332	10	M12	12	18	20	4	12	-	375	10	-	5	99	-0.1	46	29
	2	LW544.20	640.8	434	56	585	462	14	M12	14	18	20	4	12	-	505	10	-	6	105	-0.1	46	40
	3	LW644.20	742.8	534	56	685	562	16	M12	16	18	20	4	12	-	605	10	-	6	122	-0.1	46	48
	4	LW744.20	838.8	634	56	785	662	18	M12	18	18	20	4	12	-	705	10	-	6	138	-0.1	46	54
	5	LW844.20	950.4	734	56	885	762	18	M12	18	18	20	4	12	-	805	10	-	8	117	-0.1	46	65
	6	LW944.20	1046.4	834	56	985	862	20	M12	20	18	20	4	12	-	905	10	-	8	129	-0.1	46	70
	7	LW1094.20	1198.4	984	56	1135	1012	22	M12	22	18	20	4	12	-	1055	10	-	8	148	-0.1	46	83
	8	LW955.32	1096.2	805	90	1016	845	30	M20	30	22	40	6	21	-	893	19	-	9	120	-0.1	71	165
	9	LW1055.32	1198	905	90	1116	945	30	M20	30	22	40	6	21	-	993	19	-	10	118	-0.1	71	183
	10	LW1155.32	1298	1005	90	1216	1045	36	M20	36	22	40	6	21	-	1093	19	-	10	128	-0.1	71	200
	11	LW1255.32	1398	1105	90	1316	1145	42	M20	42	22	40	6	21	-	1193	19	-	10	138	-0.1	71	216
	12	LW1355.32	1498	1205	90	1416	1245	42	M20	42	22	40	6	21	-	1293	19	-	10	148	-0.1	71	234
	13	LW1455.32	1598	1305	90	1516	1345	48	M20	48	22	40	6	21	-	1393	19	-	10	158	-0.1	71	250
INNER TEETH 内 齿 式	1	LN414.20	518	326.5	56	490	375	8	18	12	M12	20	4	12	453	-	10	-	5	67	-0.15	46	27
	2	LN544.20	648	445.2	56	620	505	10	18	16	M12	20	4	12	583	-	10	-	6	76	-0.1	46	37
	3	LN644.20	748	547.2	56	720	605	12	18	18	M12	20	4	12	683	-	10	-	6	93	-0.1	46	44
	4	LN744.20	848	649.2	56	820	705	12	18	20	M12	20	4	12	783	-	10	-	6	110	-0.1	46	51
	5	LN844.20	948	737.6	56	920	805	14	18	20	M12	20	4	12	883	-	10	-	8	94	-0.1	46	62
	6	LN944.20	1048	841.6	56	1020	905	16	18	22	M12	20	4	12	983	-	10	-	8	107	-0.1	46	66
	7	LN1094.20	1198	985.6	56	1170	1055	16	18	24	M12	20	4	12	1133	-	10	-	8	125	-0.1	46	81
	8	LN955.32	1100	812	90	1060	894	30	22	30	M20	40	6	21	1017	-	19	-	9	83	-0.1	71	159
	9	LN1055.32	1200	912	90	1160	994	30	22	30	M20	40	6	21	1117	-	19	-	10	93	-0.1	71	176
	10	LN1155.32	1300	1012	90	1260	1094	36	22	36	M20	40	6	21	1217	-	19	-	10	103	-0.1	71	192
	11	LN1255.32	1400	1112	90	1360	1194	42	22	42	M20	40	6	21	1317	-	19	-	10	113	-0.1	71	208
	12	LN1355.32	1500	1212	90	1460	1294	42	22	42	M20	40	6	21	1417	-	19	-	10	123	-0.1	71	226
	13	LUN1455.32	1600	1310	90	1560	1394	48	22	48	M20	40	6	21	1517	-	19	-	10	133	-	71	243

